



"The Alternate Source"®

YOUR GUIDE TO THE PELTON & CRANE LIGHT FANTASTIC® II DENTAL LIGHTS

Replacement Parts Industries, Inc. is pleased to present this valuable work tool that can help save you and your customers time and money. Take a look, you will find a Trouble Shooting guide, exploded views and a complete listing of all RPI parts that fit the Pelton & Crane LFII series dental lights. It's all here, in one easy-to-use tool. Keep it close by – in your RPI catalog or at your workbench.

TROUBLE SHOOTING

SYMPTOM	CAUSE	SOLUTION	UNIT LIGHT – LFI	LAB LIGHT – LFL II	COLUMN LIGHT – LFC II	DUAL COLUMN – LFC II-D	TRACK LIGHT – LFT II	DUAL TRACK – LFT II-D	WALL LIGHT 2 EXTENSION – LFW II(2)	WALL LIGHT 3 EXTENSION – LFW II(3)
LIGHT HEAD TILTS WITHIN YOKE	1. LOOSE PIVOT BUSHING 2. DEFECTIVE PIVOT BUSHING	1. TIGHTEN PIVOT BUSHING 2. REPLACE PIVOT BUSHING	• •	• •	• •	• •	• •	• •	• •	• •
LIGHT HEAD DRIFTS IN THE HORIZONTAL POSITION	1. LIGHT POST IS NOT LEVEL 2. LOOSE SNUBBING PINS 3. WORN WAVE WASHER 4. DEFECTIVE STRAIGHT KNUCKLE	1. LEVEL LIGHT POST 2. TIGHTEN SNUBBING PIN 3. REPLACE WAVE WASHER 4. REPLACE STRAIGHT KNUCKLE	• • • •	• •						• • • •
LIGHT HEAD DRIFTS IN THE HORIZONTAL POSITION	1. LIGHT COLUMN IS NOT LEVEL 2. DEFECTIVE WAVE WASHER	1. LEVEL LIGHT POST 2. REPLACE WAVE WASHER			• •	• •	• •	• •	• •	
LIGHT HEAD DIFFICULT TO MOVE	1. WORN THREADS ON PIVOT ROD	1. REPLACE PIVOT ROD			•	•	•	•	•	
FRONT ARM DRIFTS HORIZONTALLY	1. LIGHT POST NOT LEVEL 2. LOOSE SNUBBING PINS 3. WORN WAVE WASHER 4. STRAIGHT KNUCKLE DEFECTIVE 5. ARM ADAPTER IS DEFECTIVE	1. LEVEL LIGHT POST 2. TIGHTEN SNUBBING PINS 3. REPLACE WAVE WASHER 4. REPLACE STRAIGHT KNUCKLE 5. REPLACE THE ARM ADAPTER	• • • • •		• •	• •				
FRONT ARM DRIFTS HORIZONTALLY	1. LOOSE MOUNTING BOX	2. SECURE BOX AND LEVEL		•					•	•
FRONT ARM DRIFTS DOWNWARD	1. GAS SPRING REQUIRES ADJUSTMENT 2. DEFECTIVE GAS SPRING	1. ADJUST GAS SPRING 2. REPLACE GAS SPRING	• •	• •	• •	• •	• •	• •	• •	• •
FRONT ARM DRIFTS DOWNWARD	1. FRICTION ADJUSTMENT REQUIRED 2. MAIN SPRING REQUIRES ADJUSTMENT 3. DEFECTIVE MECHANICAL SPRING	1. ADJUST FRICTION ADAPTER 2. ADJUST MAIN SPRING 3. REPLACE MECHANICAL SPRING	• • •	• • •	• • •	• • •	• • •	• • •	• • •	• • •



"The Alternate Source"®

**This Chart Lists All of the RPI Parts (as of 6/00)
By Model That Fit the LFII Series Lights.**

Order Your Parts Today, Have Them Tomorrow From RPI.

It's just that simple. Call today or visit our website!

Call (800) 221-9723 • Fax (818) 882-7028

E-mail order@rpiparts.com • Website www.rpiparts.com

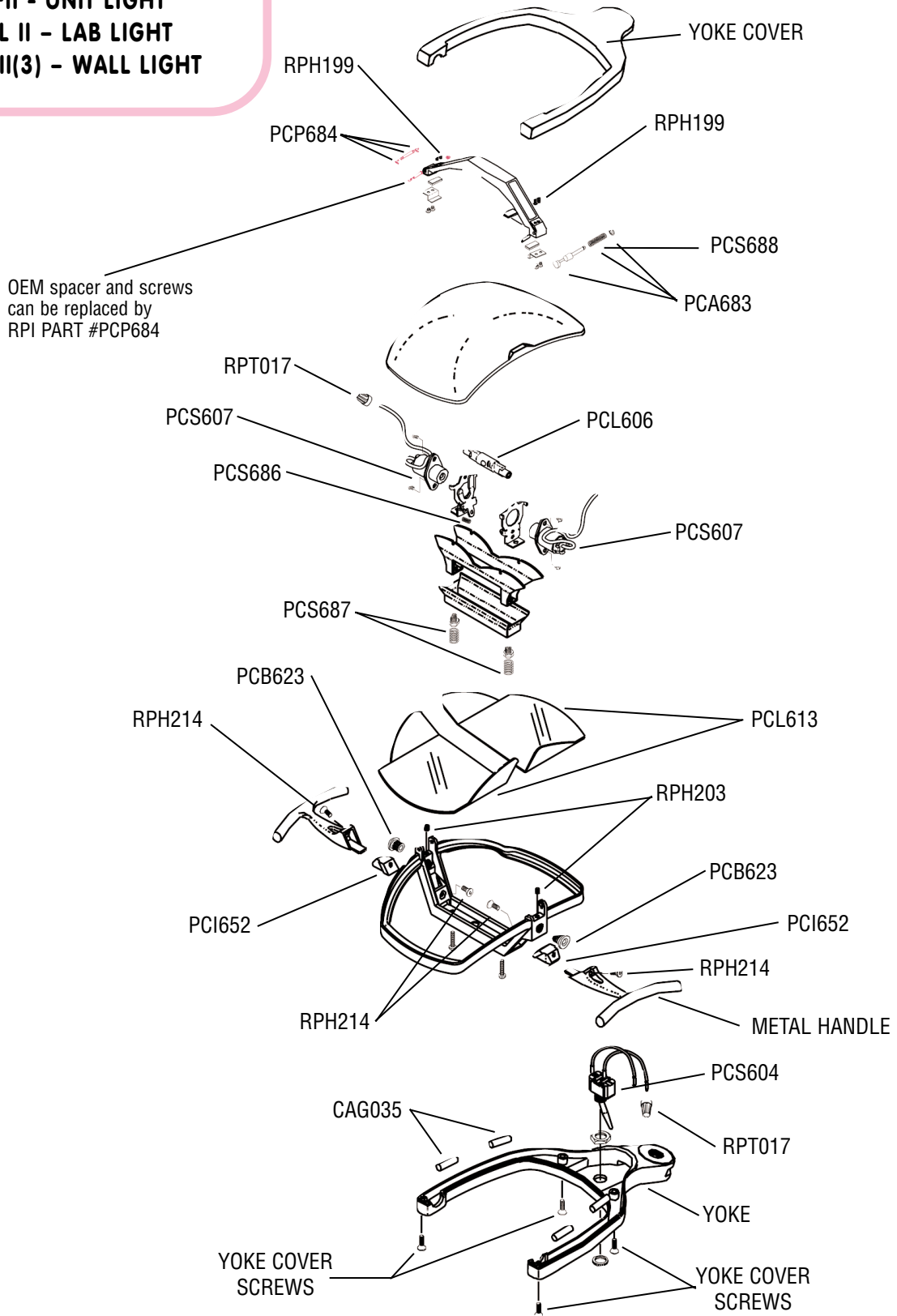
RPI PART #	OEM PART #	DESCRIPTION	UNIT LIGHT – LFII	LAB LIGHT – LFL II	COLUMN LIGHT – LFC II	DUAL COLUMN – LFC II-D	TRACK LIGHT – LFT II	DUAL TRACK – LFT II-D	WALL LIGHT 2 EXTENSION – LFW II(2)	WALL LIGHT 3 EXTENSION – LFW II(3)
PCA657	001030	TROLLEY BRACKET ASSEMBLY			•	•				
RPP093	007466	SPRING (ROLL) PIN			•	•	•	•	•	
PCW620	013721	WIRE HARNESS			•	•				
PCS601	014140	GAS SPRING WITH ANCHOR (190 LBS)			•	•	•	•	•	
PCA683	014707	RELEASE PIN ASSEMBLY	•	•	•	•	•	•	•	•
PCB623	014901	RELECTOR PIVOT BUSHING	•	•	•	•	•	•	•	•
PCS687	015160	FOCUS SPRING	•	•	•	•	•	•	•	•
PCR694	015186	PIVOT ROD			•	•	•	•	•	
RPH241	015502	WAVE WASHER			•	•	•	•	•	
PCS688	015505	RELEASE SPRING	•	•	•	•	•	•	•	•
PCI652	015565	INSULATOR	1	1	1	1	1	1	1	1
PCS686	015597	LAMP REMOVAL SPRING	•	•	•	•	•	•	•	•
PCW603	015769	WIRE HARNESS ASSEMBLY	•	•	•	•	•	•	•	•
PCS671	015805	FRONT KNUCKLE SUPPORT	•	•	•	•	•	•	•	•
PCS672	015806	REAR KNUCKLE SUPPORT	•	•	•	•	•	•	•	•
PCK668	015810	DROP KNUCKLE			•	•	•	•	•	
PCT622	015892	TRANSFORMER	•				•	•		
PCK651	016188	DRIFT KIT	•	•	•	•				•
PCT615	016749	GAS SPRING TOOL	•	•	•	•	•	•	•	•
PCS602	017185	GAS SPRING WITH ANCHOR (170 LBS)	•	•						•
CAG035	017187	COVER GASKET	•	•	•	•	•	•	•	•
PCS647	023644	GAS SPRING (175 LBS)	2	2						2
PCS648	023645	GAS SPRING (185 LBS)	1	1						1
PCS649	023646	GAS SPRING (195 LBS)			2	2	2	2	2	
PCS650	023647	GAS SPRING (210 LBS)			1	1	1	1	1	
PCP684	026471	HINGE PIN	•	•	•	•	•	•	•	•
PCA653	026478	GAS SPRING ASSEMBLY (175 LBS)	2	2						2
PCA654	026479	GAS SPRING ASSEMBLY (185 LBS)	1	1						1
PCA655	026480	GAS SPRING ASSEMBLY (195 LBS)			2	2	2	2	2	
PCA656	026481	GAS SPRING ASSEMBLY (210 LBS)			1	1	1	1	1	
RPH211	090650	SOCKET HEAD SET SCREW	•	•	•	•	•	•	•	•
PCA701	1532907	CEILING MOUNT - MECHANICAL SPRING			•	•	•	•	•	
PCL613	3321598 (015310)	LENS SPLASH SHIELD	•	•	•	•	•	•	•	•
PCS681	3321820 (013553)	DIMMER SWITCH	•		•	•				
PCT621	3321846 (015768)	TRANSFORMER	•	•	•	•			•	•
PCS604	3321853 (007096)	POWER SWITCH	•	•	•	•	•	•	•	•
PCL606	3321879 (017133)	LAMP	•	•	•	•	•	•	•	•
PCP677	3322620 (015433)	TIE BAR PIVOT PIN	•	•	•	•	•	•	•	•
BUK042	3322646 (015408)	DIMMER KNOB	•		•	•				
PCS675	3322968	SPACER	•	•	•	•	•	•	•	•
PCP678	3322976 (025433)	KNUCKLE PIVOT PIN	•	•	•	•	•	•	•	•
PCK693	3323016 & (015502)	WAVE WASHER KIT			•	•	•	•	•	
RPH242	3323016	FLAT WASHER			•	•	•	•	•	
PCS697	3323073 (026597)	KNUCKLE HINGE SCREW	•		•	•				
RPH214	3323115 (090191)	FLAT HEAD HEAD SOCKET CAP SCREW	•	•	•	•	•	•	•	•
RPH208	3323123 (090645)	SOCKET HEAD SET SCREW	•		•	•				
RPH212	3324170 (090713)	FLAT HEAD SOCKET CAP SCREW			•	•	•	•	•	
PCK669	3325169 (015809)	STRAIGHT KNUCKLE	•	•	•	•				•
PCS607	3336992 (015208)	LIGHT SOCKET	•	•	•	•	•	•	•	•
PCA670	3322604 (014530)	ARM ADAPTER	•		•	•				
PCA700	9439738	UNIT MOUNT - MECHANICAL SPRING	•	•						•
PCB667	N/A	TIE BARS (USE WITH GAS SPRING ONLY)	•	•	•	•	•	•	•	•
RPA032	N/A	THREADLOCKER 242	3	3	3	3	3	3	3	3

OEM PART #'S ENCLOSED IN PARENTHESES INDICATES "OLD OEM PART#".

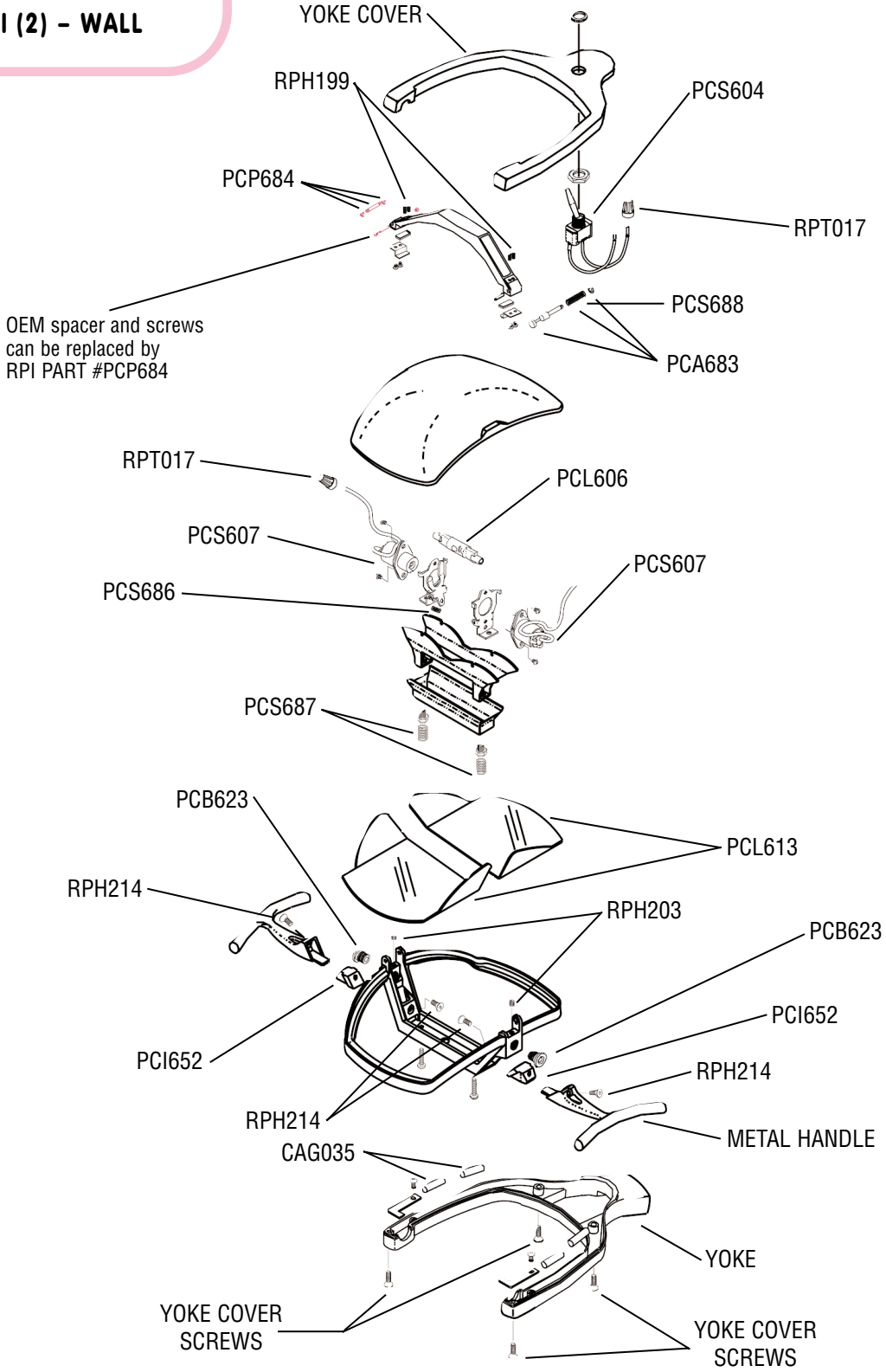
(1) LIGHT HEAD WITH METAL HANDLES ONLY. (2) LIGHT HEAD WITH PLASTIC HANDLES ONLY. (3) IT IS RECOMMENDED TO USE TREADLOCKER 242 (RPI PART #RPA032) ON THE FOLLOWING PARTS: RPH214 & RPH212. THE ABOVE PARTS ARE MANUFACTURED BY REPLACEMENT PARTS INDUSTRIES, INC. TO FIT PELTON & CRANE EQUIPMENT. LIGHT FANTASTIC II IS A © TRADEMARK OF SIEMANS/PELTON & CRANE. CO SUB SIEMENS MEDICAL SYSTEMS INC. 6/00 RPI© 2000



LIGHT HEAD
LFII - UNIT LIGHT
LFL II - LAB LIGHT
LFW II(3) - WALL LIGHT

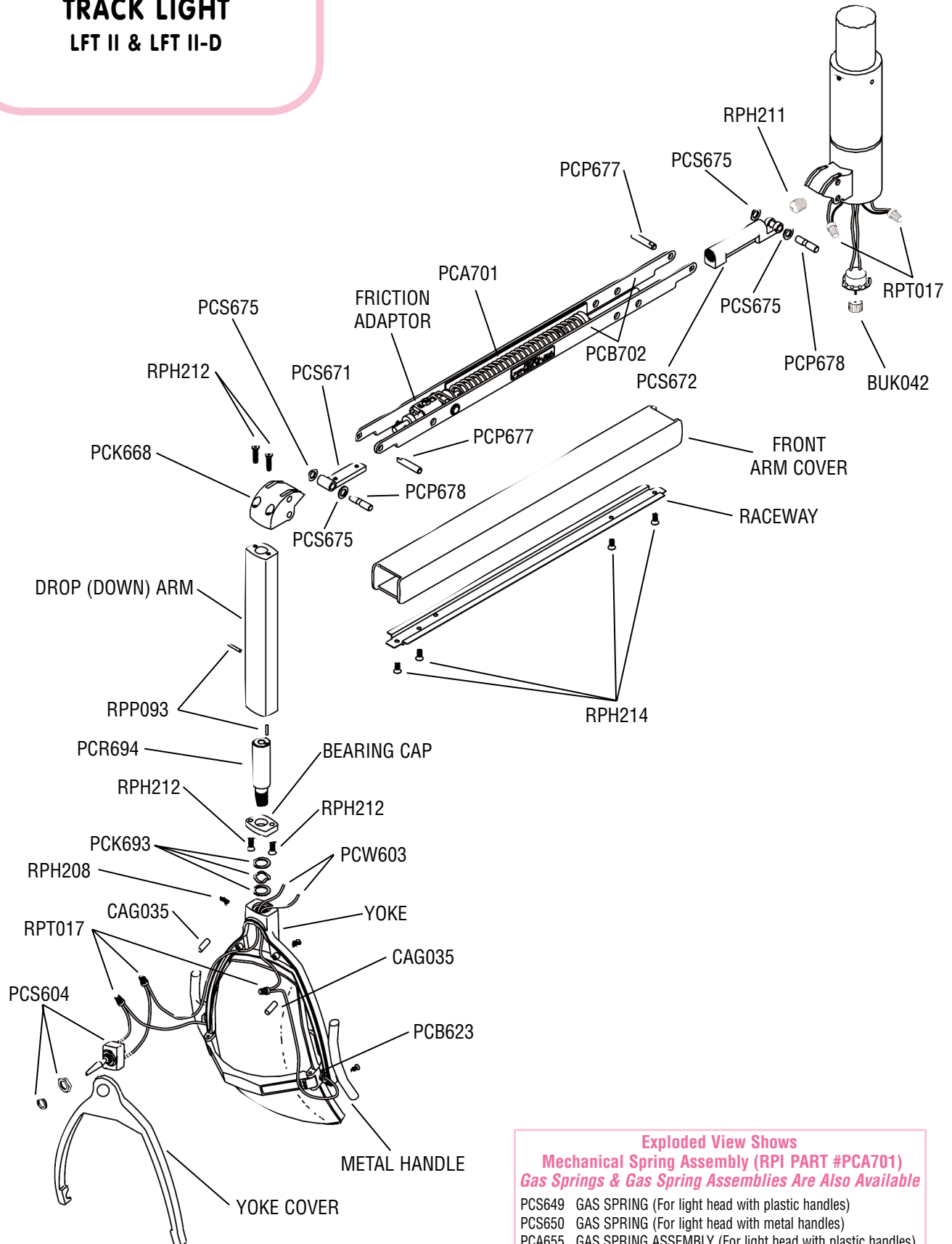


LIGHT HEAD
LFC II & LFC II-D - CEILING
LFT II & LFT II-D - TRACK
LFVII (2) - WALL



TRACK LIGHT

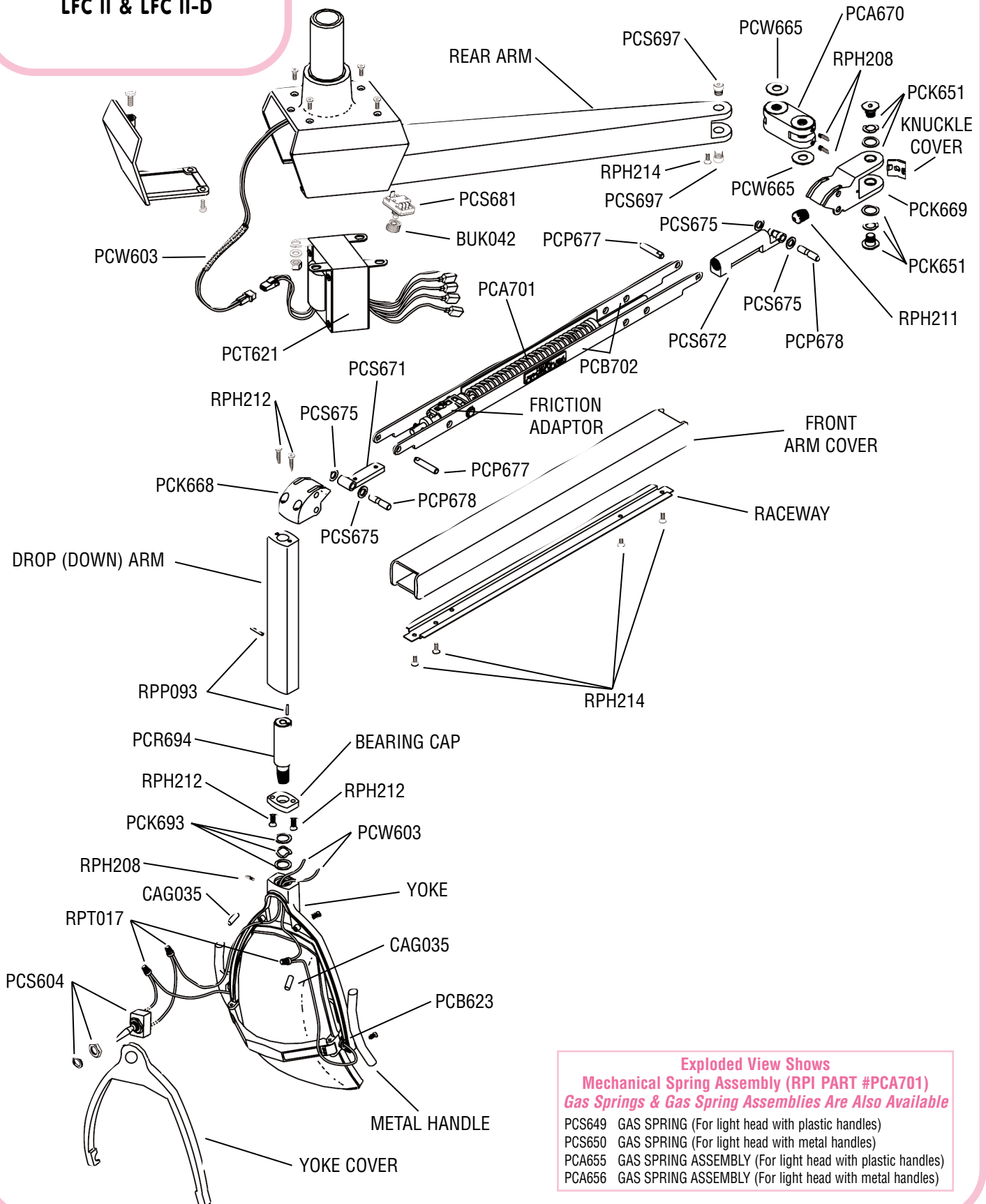
LFT II & LFT II-D



Exploded View Shows
Mechanical Spring Assembly (RPI PART #PCA701)
Gas Springs & Gas Spring Assemblies Are Also Available

- PCS649 GAS SPRING (For light head with plastic handles)
- PCS650 GAS SPRING (For light head with metal handles)
- PCA655 GAS SPRING ASSEMBLY (For light head with plastic handles)
- PCA656 GAS SPRING ASSEMBLY (For light head with metal handles)

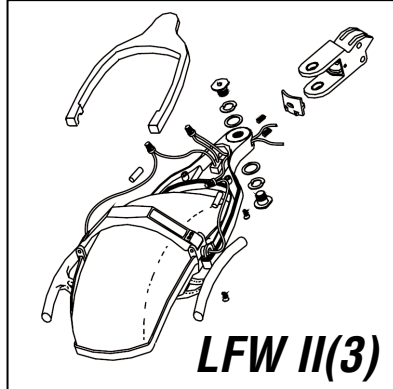
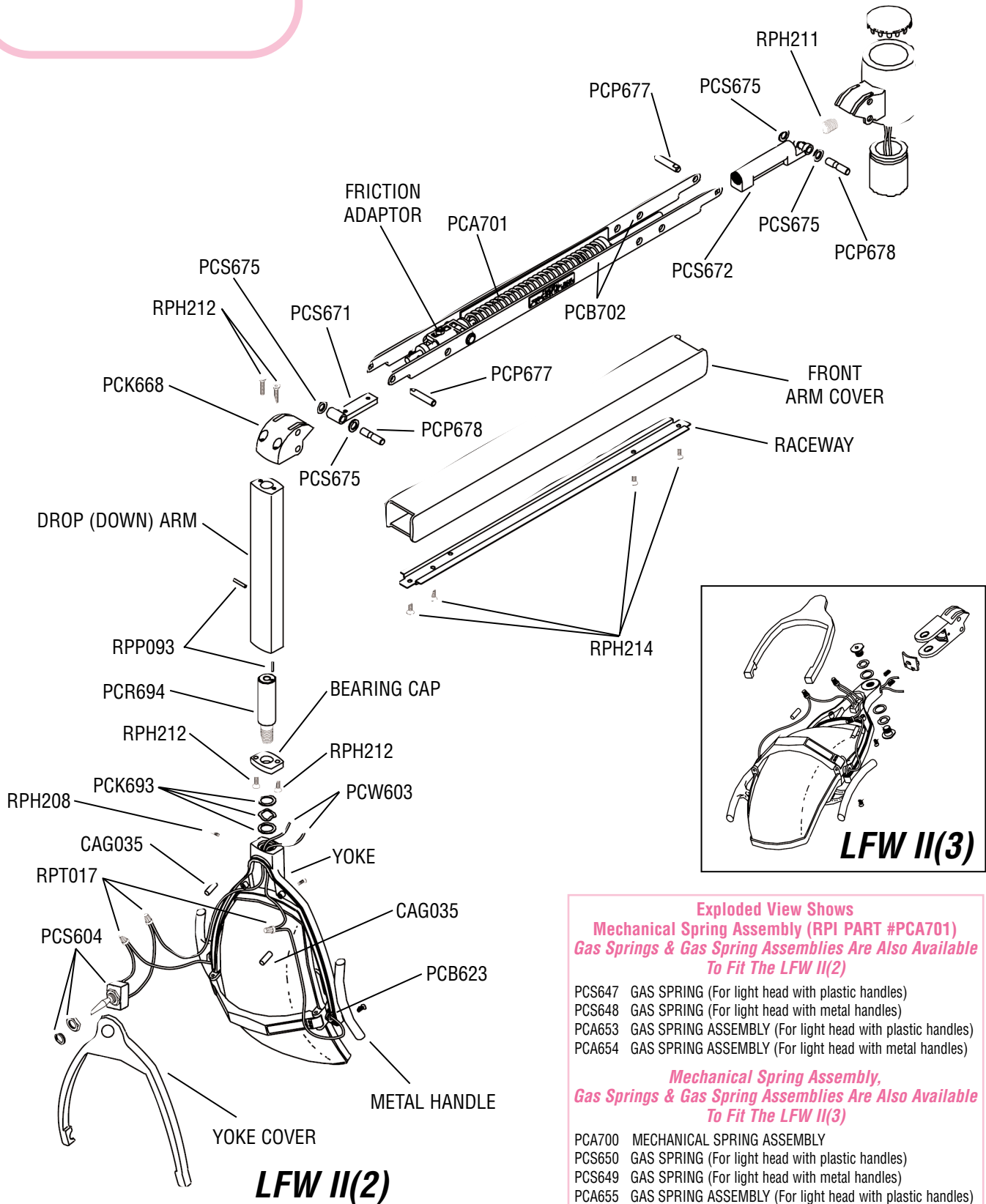
CEILING LIGHT LFC II & LFC II-D



**Exploded View Shows
Mechanical Spring Assembly (RPI PART #PCA701)
Gas Springs & Gas Spring Assemblies Are Also Available**

PCS649	GAS SPRING (For light head with plastic handles)
PCS650	GAS SPRING (For light head with metal handles)
PCA655	GAS SPRING ASSEMBLY (For light head with plastic handles)
PCA656	GAS SPRING ASSEMBLY (For light head with metal handles)

WALL LIGHT
LFW II(2) & LFW II(3)



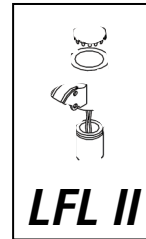
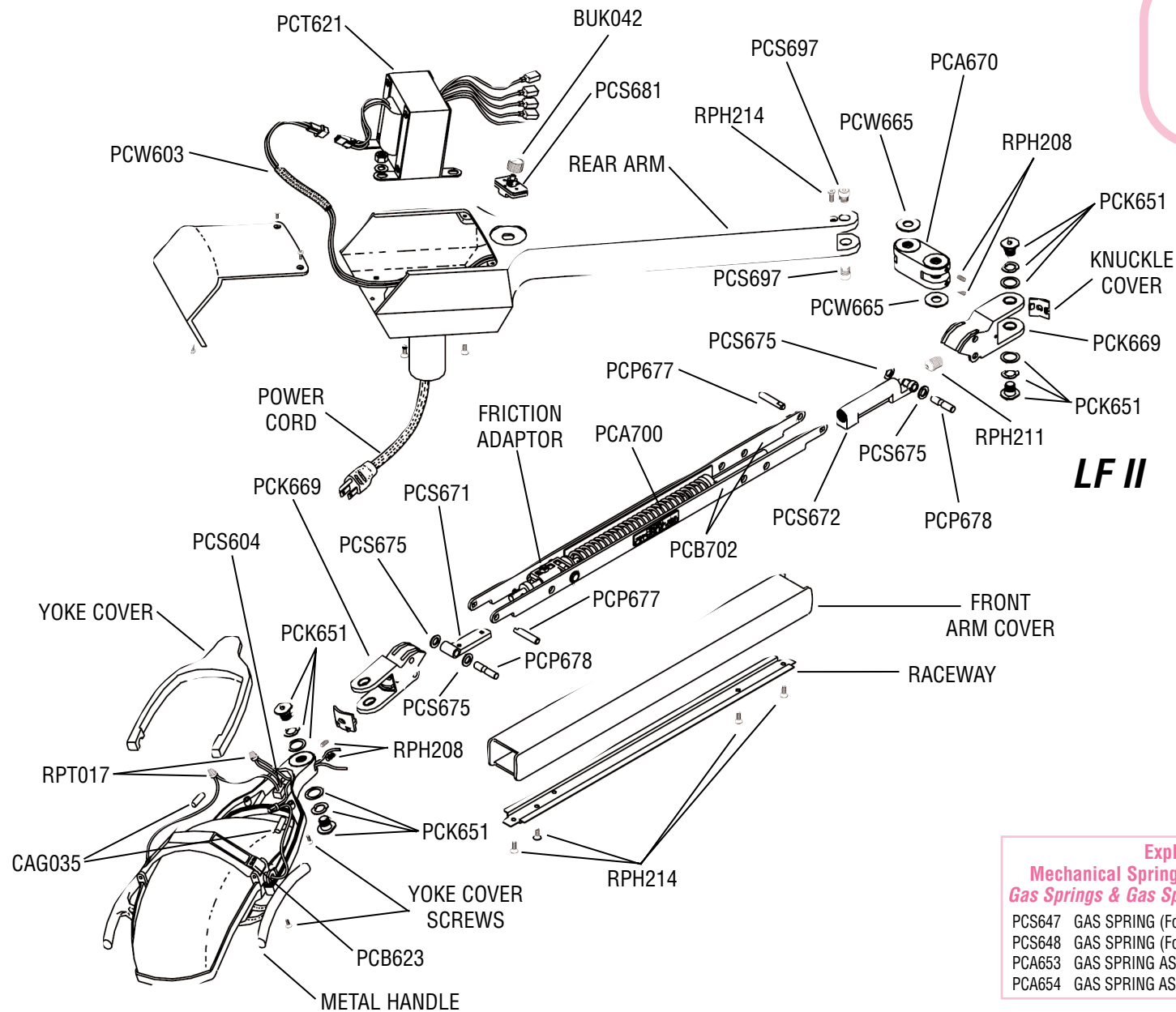
Exploded View Shows
Mechanical Spring Assembly (RPI PART #PCA701)
Gas Springs & Gas Spring Assemblies Are Also Available To Fit The LFW II(2)

- PCS647 GAS SPRING (For light head with plastic handles)
- PCS648 GAS SPRING (For light head with metal handles)
- PCA653 GAS SPRING ASSEMBLY (For light head with plastic handles)
- PCA654 GAS SPRING ASSEMBLY (For light head with metal handles)

Mechanical Spring Assembly,
Gas Springs & Gas Spring Assemblies Are Also Available To Fit The LFW II(3)

- PCA700 MECHANICAL SPRING ASSEMBLY
- PCS650 GAS SPRING (For light head with plastic handles)
- PCS649 GAS SPRING (For light head with metal handles)
- PCA655 GAS SPRING ASSEMBLY (For light head with plastic handles)
- PCA656 GAS SPRING ASSEMBLY (For light head with metal handles)

UNIT LIGHT LFII & LFL II



**Exploded View Shows
Mechanical Spring Assembly (RPI PART #PCA700)
Gas Springs & Gas Spring Assemblies Are Also Available**

- PCS647 GAS SPRING (For light head with plastic handles)
- PCS648 GAS SPRING (For light head with metal handles)
- PCA653 GAS SPRING ASSEMBLY (For light head with plastic handles)
- PCA654 GAS SPRING ASSEMBLY (For light head with metal handles)