

DentalEZ®/Custom Air/RamVac, MatrX Medical, MatrX/Midmark® & Midmark®

NEW *PM Kits and More to fit*
DENTAL VACUUM UNITS!



RPI Part #VPK185
OEM Part #77000796
(Filter Element) &
77007063 (Purge Muffler)

VACUUM PM KIT

- For single headed vacuum systems
- Includes: (1 pkg) Filter Element (RPI Part #VPE188), Purge Muffler (RPI Part #VPM190), PM sticker, and PM checklist
- Also available: Filter Cap (RPI Part #VPC189)

Fits: Vacuum Pump

Models: *Midmark:* PM-1;
Matrx Medical • MatrX/Midmark: PM-75



RPI Part #VPK187
OEM Part #77000796
(Filter Element) &
77007063 (Purge Muffler)

VACUUM PM KIT

- For triple headed vacuum systems
- Includes: (3 pkgs) Filter Element (RPI Part #VPE188), (3) Purge Muffler (RPI Part #VPM190), PM sticker, and PM checklist
- Also available: Filter Cap (RPI Part #VPC189)

Fits: Vacuum Pump

Models: *Midmark:* PM-4;
Matrx Medical • MatrX/Midmark: PM-75-3



RPI Part #VPK186
OEM Part #77000796
(Filter Element) &
77007063 (Purge Muffler)

VACUUM PM KIT

- For dual headed vacuum systems
- Includes: (2 pkgs) Filter Element (RPI Part #VPE188), (2) Purge Muffler (RPI Part #VPM190), PM sticker, and PM checklist
- Also available: Filter Cap (RPI Part #VPC189)

Fits: Vacuum Pump

Models: *Midmark:* PM-3;
Matrx Medical • MatrX/Midmark: PM-75-2



RPI Part #VPE188
OEM Part #77000796

FILTER ELEMENT

- 2 per package
- Size: 1.25" OD x 2.19" lg.
- Felt elements
- Includes: (2) Filters, (2 pcs) O-Ring (RPI Part #RX0086) and PM sticker
- Also available: Filter Cap (RPI Part #VPC189)
- See **Note** below for quantity required for each model

Fits: Vacuum Pump

Models: *Midmark:* PM-1, PM-3 & PM-4;
Matrx Medical • MatrX/Midmark: PM-75, PM-75-2 & PM-75-3



RPI Part #VPM190
OEM Part #77007063

PURGE MUFFLER

- Port Size: 3/8" MPT
- Size: 11/16" hex x 1-1/2" lg.
- Material: 40 micron sintered bronze

Fits: Vacuum Pump

Models: *Midmark:* PM-1, PM-3 & PM-4;
Matrx Medical • MatrX/Midmark: PM-75,
PM-75-2 & PM-75-3



RPI Part #RX0086
OEM Part #7700789

O-RING

- 2 per package
- Size: 1.362" ID x 1.568" OD x .103" C/S
- Material: Nitrile (Buna-N); Duro 70

Fits: Vacuum Pump

Models: *Midmark:* PM-1, PM-3 & PM-4;
Matrx Medical • MatrX/Midmark: PM-75,
PM-75-2 & PM-75-3



RPI Part #VPC189
OEM Part #77000788

FILTER CAP

- 2 per package
- Also available: O-Ring (RPI Part #RX0086)
- See **Notes** below for quantity required for each model
- Holds Filter Element (RPI Part #VPE188)

Fits: Vacuum Pump

Models: *Midmark:* PM-1, PM-3 & PM-4;
Matrx Medical • MatrX/Midmark: PM-75,
PM-75-2 & PM-75-3

Note: *Midmark:* PM-1 requires 1 package, PM-3 requires 2 packages, PM-4 requires 3 packages;
Matrx/Midmark: PM-75 requires 1 package, PM-75-2 requires 2 packages, and PM-75-3 requires 3 packages.



replacement parts industries, inc. *A Healthcare Components Group Company*
CALL (800) 221-9723 • FAX (818) 882-7028 • EMAIL order@rpiparts.com • WEBSITE www.rpiparts.com

The above parts are manufactured by Replacement Parts Industries, Inc. to fit the equipment noted. All product names used in this document are trademarks or registered trademarks of their respective holders. 2007VP Show 03/22



RPI Part #VPK192
OEM Part # (No OEM Part # Available)

VACUUM PM KIT

- Includes: Oil Filter Media Kit (RPI Part #VPK193), Muffler (RPI Part #VPM194), Instant Gasket Sealant (RPI Part #RXS087), (3) Synthetic Oil (Mobil 1®) (RPI Part #VPL131), (1 pkg) Disposal Bag (RPI Part #RPB838), (1 pkg) Absorbent Pad (RPI Part #RPP958), and PM sticker
- Also available: Grommet (RPI Part #VPG205)

Fits: Oil Reservoir
Models: *DentalEZ/Custom Air/RamVac:* Bulldog 550, Bulldog QT1, Bulldog QT2 & Bulldog QT3

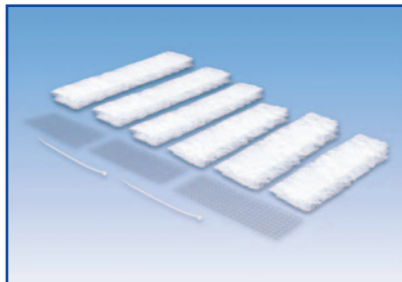


RPI Part #VPK196
OEM Part # (No OEM Part # Available)

VACUUM PM KIT

- Includes: Oil Filter Media Kit (RPI Part #VPK197), Muffler (RPI Part #VPM198), Instant Gasket Sealant (RPI Part #RXS087), (5) Synthetic Oil (Mobil 1®) (RPI Part #VPL131), (1 pkg) Disposal Bag (RPI Part #RPB838), (1 pkg) Absorbent Pad (RPI Part #RPP958), and PM Sticker
- Also available: Grommet (RPI Part #VPG205), Float Switch (Low Oil) (RPI Part #VPS201), and Float Switch (Water In Oil) (RPI Part #VPS202)

Fits: Oil Reservoir
Models: *DentalEZ/Custom Air/RamVac:* Bison 3 & Bison 5

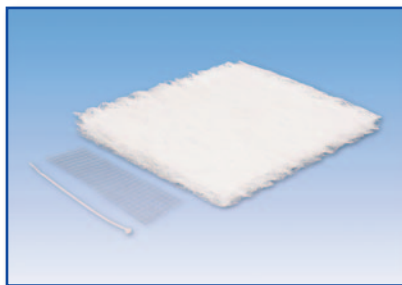


RPI Part #VPK193
OEM Part #003727SP

OIL FILTER MEDIA KIT

- Includes: Filter media, galvanized mesh, (2 pcs) Cable Tie (RPI Part #RPT661), and PM sticker
- Included in: PM Kit (RPI Part #VPK192)

Fits: Lid Assembly
Models: *DentalEZ/Custom Air/RamVac:* Bulldog 550, Bulldog QT1, Bulldog QT2 & Bulldog QT3



RPI Part #VPK197
OEM Part #003729SP

OIL FILTER MEDIA KIT

- Includes: Filter media, galvanized mesh, (1 pc) Cable Tie (RPI Part #RPT661), and PM sticker
- Included in: PM Kit (RPI Part #VPK196) and PM Kit (RPI Part #VPK200)

Fits: Lid, Oil Reservoir Assembly
Models: *DentalEZ/Custom Air/RamVac:* Bison 3, Bison 5, Bison 7 & Bison 9



RPI Part #VPM198
OEM Part #003684SP

MUFFLER

- Material: Zinc plated steel case, stainless steel screen mesh
- Port Size: 2" MPT; Size: 2-3/8" hex x 5-19/32" lg.
- Includes: Mounting screw
- Included in: PM Kit (RPI Part #'s VPK196 & VPK200)

Fits: Reservoir
Models: *DentalEZ/Custom Air/RamVac:* Bison 3, Bison 5, Bison 7 & Bison 9



RPI Part #VPM194
OEM Part #003682SP

MUFFLER

- Material: Zinc plated steel case, stainless steel screen mesh
- Port Size: 1-1/2" MPT; Size: 2.00" hex x 4-15/16" lg.
- Includes: Mounting screw
- Included in: PM Kit (RPI Part #VPK192)

Fits: Reservoir
Models: *DentalEZ/Custom Air/RamVac:* Bulldog 550, Bulldog QT1, Bulldog QT2 & Bulldog QT3



RPI Part #RPB838
OEM Part # (No OEM Part # Available)

DISPOSAL BAG

- 3 per package
 - Used oil collection and disposal bag
- Models:** *DentalEZ/Custom Air/RamVac:* Bulldog 550, Bulldog QT1, Bulldog QT2, Bulldog QT3, Bison 3, Bison 5, Bison 7 & Bison 9



RPI Part #VPK200
OEM Part # (No OEM Part # Available)

VACUUM PM KIT

- Includes: Oil Filter Media Kit (RPI Part #VPK197), (2) Muffler (RPI Part #VPM198), Instant Gasket Sealant (RPI Part #RXS087), (5) Synthetic Oil (Mobil 1®) (RPI Part #VPL131), (1 pkg) Disposal Bag (RPI Part #RPB838), (1 pkg) Absorbent Pad (RPI Part #RPP958), and PM Sticker
- Also available: Grommet (RPI Part #VPG205), Float Switch (Low Oil) (RPI Part #VPS201), and Float Switch (Water In Oil) (RPI Part #VPS202)

Fits: Oil Reservoir
Models: *DentalEZ/Custom Air/RamVac:* Bison 7 & Bison 9

RPI Part #RXS087
OEM Part # (No OEM Part # Available)
Industry Part #Loctite 40478



INSTANT GASKET SEALANT

- 3.04 fl. oz. (90ml) aerosol can
- Material: Black silicone; Temperature range: -65° to 450°F
- Included in: PM Kit (RPI Part #'s VPK192, VPK196 & VPK200)

Fits: Oil Reservoir Lid Assembly
Models: *DentalEZ/Custom Air/RamVac:* Bulldog 550, Bulldog QT1, Bulldog QT2, Bulldog QT3, Bison 3, Bison 5, Bison 7 & Bison 9



RPI Part #VPL131
OEM Part # (No OEM Part # Available)

SYNTHETIC OIL (MOBIL 1®)

- Size: 1 Quart (.946 Liter) bottle
- 15W-50 (ISO grade 32)
- Also available: Synthetic Oil (Mobil 1®) (Case of 6) (RPI Part #VPL132)

Fits: Vacuum Unit
Models: *DentalEZ/Custom Air/RamVac:* Bulldog 550, Bulldog QT1, Bulldog QT2, Bulldog QT3, Bison 3, Bison 5, Bison 7 & Bison 9

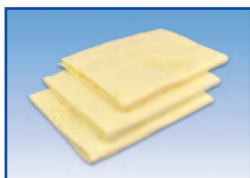


RPI Part #RPP958
OEM Part # (No OEM Part # Available)

ABSORBENT PAD

- 3 per package; Size: 9-1/4" x 14-1/2"
- Can be used for oil drip collection and spills

Models: *DentalEZ/Custom Air/RamVac:* Bulldog 550, Bulldog QT1, Bulldog QT2, Bulldog QT3, Bison 3, Bison 5, Bison 7 & Bison 9



RPI Part #VPG205
OEM Part #000473

GROMMET

- 1-5/8" OD x 7/8" ID x 7/16" Thk.
- 1-1/4" dia. x .062" Panel Cutout
- Material: Nitrile (Buna-N)

Fits: Reservoir Tank/Moisture Alarm assemblies
Models: *DentalEZ/Custom Air/RamVac:* Bison 3, Bison 5, Bison 7 & Bison 9



RPI Part #VPS201
OEM Part #005093

FLOAT SWITCH (LOW OIL)

- Ports: 1/8" MPT; 36" Leads
- Vertical mount, N.C.
- Also available: Float Switch (Water In Oil) (RPI Part #VPS202), Pipe Sealant 567 (RPI Part #RPA459), Butt Connector (RPI Part #RPT011), Instant Gasket Sealant (RPI Part #RXS087), Disposal Bag (RPI Part #RPB838), Absorbent Pad (RPI Part #RPP958) and Synthetic Oil (Mobil 1®) (RPI Part #VPL131)

Fits: Oil Reservoir
Models: *DentalEZ/Custom Air/RamVac:* Bison 3, Bison 5, Bison 7 & Bison 9



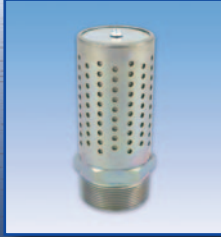
RPI Part #VPS202
OEM Part #005094

FLOAT SWITCH (WATER IN OIL)

- Ports: 1/8" MPT; 36" Leads
- Vertical mount, N.O.
- Also available: Float Switch (Low Oil) (RPI Part #VPS201), Pipe Sealant 567 (RPI Part #RPA459), Butt Connector (RPI Part #RPT011), Instant Gasket Sealant (RPI Part #RXS087), Disposal Bag (RPI Part #RPB838), Absorbent Pad (RPI Part #RPP958) and Synthetic Oil (Mobil 1®) (RPI Part #VPL131)

Fits: Oil Reservoir
Models: *DentalEZ/Custom Air/RamVac:* Bison 3, Bison 5, Bison 7 & Bison 9

NEW PM KITS AND MORE FOR DENTAL VACUUM UNITS!

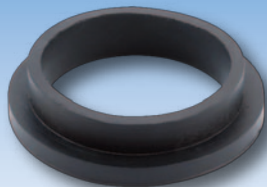


NEW PM KITS AND MORE TO FIT DENTAL VACUUM UNITS!

ADDRESS SERVICES REQUESTED

RESORTED STANDARD
U.S. POSTAGE PAID
VAN NUYS, CA
PERMIT NO. 2399

replacement parts industries, inc.
625 Cochran Street • Simi Valley, California • 93065



RPI Part #VPG195
OEM Part #000505

SPUD GASKET

- 2" round gasket
- Material: Black rubber
- Also available: Filter Kit (RPI Part #VPK113), Filter Kit (RPI Part #VPK117), Filter Element (RPI Part #VPE114), Filter Element (RPI Part #VPE115), and Filter Element (RPI Part #VPE118)

Fits: Vacuum Controller Assembly

Models: *DentalEZ/Custom Air/RamVac:* Bulldog 550, Bulldog QT1, Bulldog QT2, Bulldog QT3, Bison 3, Bison 5, Bison 7 & Bison 9



RPI Part #VPS191
OEM Part #30126601

VACUUM SWITCH

- 115/230VAC
- Contacts: N.C. DPST
- Factory set to: On @ 13"Hg. - Off @ 20"Hg.
- 1/4-18 NPSF Input Port - 3 Knock-outs for 1/2" NPT Conduit
- Also available: Pipe Sealant 567 (RPI Part #RPA459)

Fits: Vacuum Pump

Models: *Midmark:* PM-1, PM-3 & PM-4;

Matrx Medical • Matrx/Midmark: PM-75, PM-75-2 & PM-75-3