



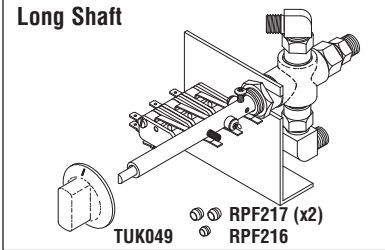
NEW PARTS TO FIT TUTTNAUER

IMPORTANT NOTE: ValueKlaves manufactured with the Multi-Purpose Valves on the right side of the machine utilized either the *Long* or *Short* Shaft versions. If you have any questions regarding selection of the proper valve or repair kit for your application, please call RPI Technical Support at 800-221-9723 or email techsupport@rpiparts.com for help.

TUTTNAUER

1730, 2340, 2540 & 3870 Series

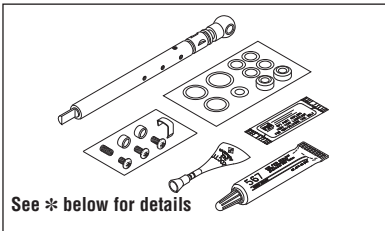
Long Shaft



RPI Part #TUV025
OEM Part #CT810013

MULTI-PURPOSE VALVE

- Valve includes *Long* shaft assembly
 - Includes all parts as shown
- Fits:** Front Panel, right side of machine
Model: 1730M/MK, 2340M/MK, 2540M/MK & 3870M



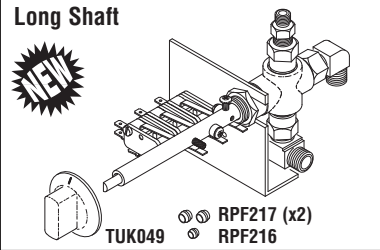
RPI Part #TUK037
OEM Part # (No OEM Part # Available)

REPAIR KIT (MPV)

- Use this Kit to repair Multi-Purpose Valve Assemblies with the *Long* shaft
 - Includes all parts as shown
- Fits:** Front Panel, right side of machine
Model: ValueKlave 1730MKV, 1730M/MK, 2340M/MK, 2540M/MK & 3870M

ValueKlave 1730MKV

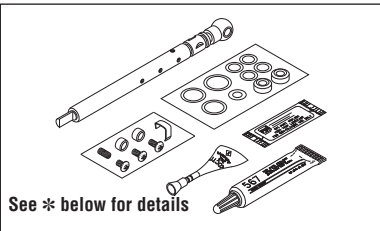
Long Shaft



RPI Part #TUV097
OEM Part #CMT173-0031

MULTI-PURPOSE VALVE

- Valve includes *Long* shaft assembly
 - Includes all parts as shown
- Fits:** Front Panel, right side of machine
Model: ValueKlave 1730MKV



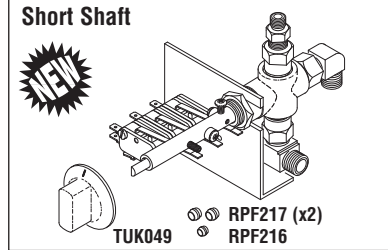
RPI Part #TUK037
OEM Part # (No OEM Part # Available)

REPAIR KIT (MPV)

- Use this Kit to repair Multi-Purpose Valve Assemblies with the *Long* shaft
 - Includes all parts as shown
- Fits:** Front Panel, right side of machine
Model: ValueKlave 1730MKV, 1730M/MK, 2340M/MK, 2540M/MK & 3870M

ValueKlave 1730MKV

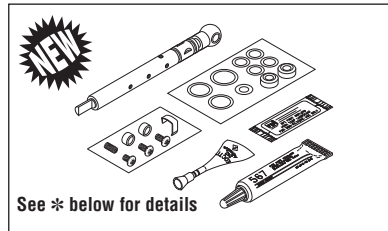
Short Shaft



RPI Part #TUV098
OEM Part #CMT173-0031

MULTI-PURPOSE VALVE

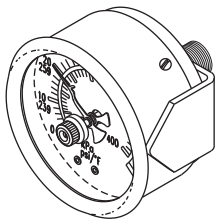
- Valve includes *Short* shaft assembly
 - Includes all parts as shown
- Fits:** Front Panel, right side of machine
Model: ValueKlave 1730MKV



RPI Part #TUK099
OEM Part # (No OEM Part # Available)

REPAIR KIT (MPV)

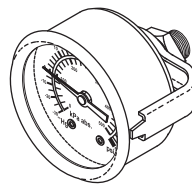
- Use this Kit to repair Multi-Purpose Valve Assemblies with the *Short* shaft
 - Includes all parts as shown
- Fits:** Front Panel, **Right and Left** side mounts
Model: ValueKlave 1730MKV



RPI Part #TUG012
OEM Part #02300011

PRESSURE GAUGE WITH INDICATOR

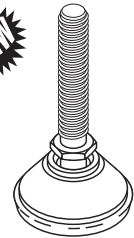
- Fits:** Front Panel
Model: 1730M/MK, 2340M/MK, 2540M/MK & 3870M



RPI Part #TUG020
OEM Part #02300012

PRESSURE GAUGE

- Fits:** Door or Front Panel
Model: ValueKlave 1730MKV, 2540EHS & 3870EHS



RPI Part #TUF058
OEM Part # 04010001 & 04010002

LEVELING FOOT

- Replaces the short stem foot (OEM Part #04010001) and long stem foot (OEM Part #04010002)
- Fits:** Front of machine
Model: EZ9, EZ10, EZ10k, ValueKlave 1730MKV, 1730E/EK/M/MK, 2340E/EA/EK/EKA/M/MK, 2540E/EA/EH/EHS/EK/EKA/M/MK & 3870E/EA/EH/EHS/M

* Includes: Shaft, (2) Cam Spacers, Spring Clip, (2) Screw, Set Screw, (1) Screw (RPI Part #RPH130), (2) Air Release Valve Seat (RPI Part #PCS036), (4) O-Ring (RPI Part #RPO360), (1) O-Ring (RPI Part #RPO439), (1) O-Ring (RPI Part #RPO448), (2) O-Ring (RPI Part #RPO488), (1) Pipe Sealant 567 (RPI Part #RPA459), (1) Threadlocker 242 (RPI Part #RPA032), and High Temp Lubricant (RPI Part #RPL090)



replacement parts industries, inc.

CALL (800) 221-9723 • FAX (818) 882-7028 • EMAIL order@rpiparts.com • WEBSITE www.rpiparts.com

The above parts are manufactured by Replacement Parts Industries, Inc. to fit Tuttnauer equipment. All product names used in this document are trademarks or registered trademarks of their respective holders. WEB 03/09