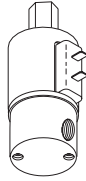




More New Parts to fit Midmark M9 & M11 UltraClaves®

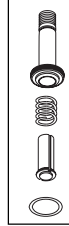
RPI Part #MIV073
OEM Part #002-0519-00

VENT SOLENOID VALVE
• Non-manifold mount
Models: M9D Serial# FF1000-Present & FG1000-present; and, M11D Serial #GC1000-present & GD1000-present



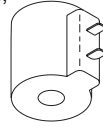
RPI Part #MIK082
OEM Part # (No OEM Part # Available)

VENT VALVE REPAIR KIT
• Non-manifold mount
Fits: Vent Solenoid Valve
Models: M9D Serial# FF1000-present & FG1000-present; and, M11D Serial #GC1000-present & GD1000-present

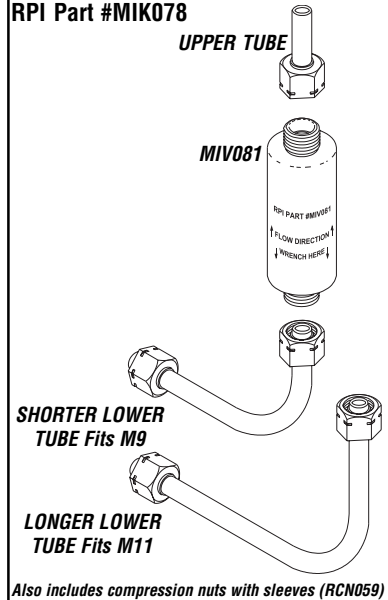


RPI Part #MIC083
OEM Part # (No OEM Part # Available)

COIL (VENT VALVE)
Fits: Vent Solenoid Valve
Models: M9D Serial# FF1000-present & FG1000-present; and, M11D Serial #GC1000-present & GD1000-present



STEAM TRAP KIT
RPI Part #MIK078



RPI Part #MIK078
OEM Part #002-0654-00

STEAM TRAP KIT (New Style/Upgrade Kit)
• Includes all parts, tubing and compression nuts with sleeves (RPI Part #RCN059) as shown (Steam Trap Valve also sold separately RPI Part #MIV081 - see below)
Fits: Chamber to condensing tank
Models: M9 & M11 (Not for use with M7)



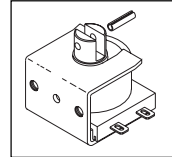
RPI Part #MIV081
OEM Part #002-0654-00

STEAM TRAP (New Style)
• For Upgrade Kit, see Steam Trap Kit (RPI Part #MIK078) above
Fits: Chamber to Condensing Tank
Models: M9 & M11 (Not for use with M7)



RPI Part #MIS079
OEM Part #002-0363-03

PULSE SOLENOID
Fits: Door hinge mounting bracket
Models: M11 only



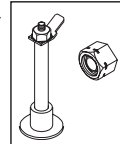
RPI Part #MIS044
OEM Part #002-0363-00

PULSE SOLENOID
Fits: Door hinge mounting bracket
Models: M9 only

**MIS044
REDESIGNED!**

RPI Part #MIS075
OEM Part #002-0358-00

WATER LEVEL SENSOR ASSY
• Includes all parts as shown
Fits: Chamber
Models: M9 & M11



NEW! PM KITS TO FIT M9 & M11

The RPI PM Kits include all of the parts needed • The OEM Kits offer only the Door & Dam Gasket • It's the RPI Advantage!

RPI Part #MIK072
OEM Part #002-0361-00 (Door & Dam Gaskets only)

STERILIZER PM KIT (Fits M9)
• Includes all parts as shown below
Models: M9

MIF062 Mesh Style Filters
For newer style machines

MIF038 Sintered Bronze Filter
For older style machines

MIS076 Door Springs

MIG027 Door Gasket

MIG035 Dam Gasket

Fits M9 – All Parts in Kit Also Sold Separately!

RPI Part #MIK080
OEM Part #002-0504-00 (Door & Dam Gaskets only)

STERILIZER PM KIT (Fits M11)
• Includes all parts as shown below
Models: M11

MIF062 Mesh Style Filters
For newer style machines

MIF038 Sintered Bronze Filter
For older style machines

MIS076 Door Springs

MIG028 Door Gasket

MIG036 Dam Gasket

Fits M11 – All Parts in Kit Also Sold Separately!