

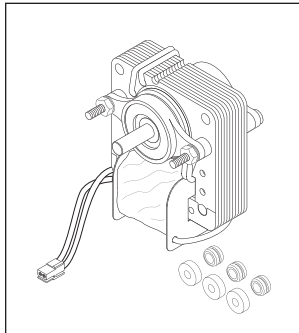


Add this page to your RPI catalog – Section 4, Page 852

Dental Film Processors & X-Ray Units

INTRODUCING MORE NEW PARTS TO FIT GENDEX GXP™ FILM PROCESSORS & X-RAY UNITS

FILM PROCESSORS

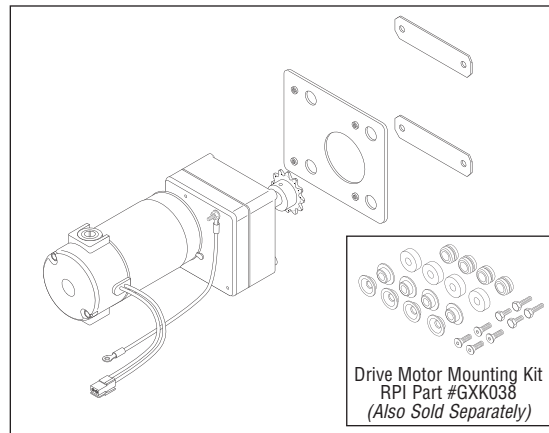


RPI Part #GXM023
OEM Part #112-0531G1

AGITATOR MOTOR

- 120VAC, 60 Hz.
- Impedance protected
- 1/4" dia. shaft, 3/4" lg.
- Sealed ball bearings
- Includes Motor, Connector, and (3 each) mounting grommets and spacers

Fits: Agitator Assembly (bottom tanks)



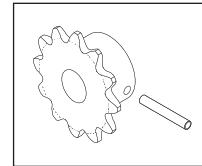
Drive Motor Mounting Kit
RPI Part #G XK038
(Also Sold Separately)

RPI Part #GXM002
OEM Part # 112-0534G1

DRIVE MOTOR

- 90VDC
- Includes Motor, Connector, Mounting Plate, (2) Mounting Brackets, and Drive Motor Mounting Kit (RPI Part #G XK038)

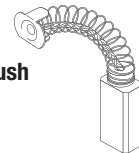
Fits: Bottom frame



RPI Part #GXS003
OEM Part #303-0042P1

SPROCKET

- Includes Sprocket and Drive Pin
- Fits:** Main Drive Motor



RPI Part #GXB004
OEM Part #652-0015P1/Brush

MOTOR BRUSH (2/pkg)

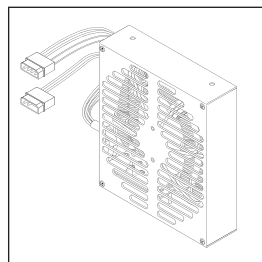
- .187" x .312" x .625"
 - Spring length: .88"
- Fits:** Main Drive Motor



RPI Part #RPC038
OEM Part #652-0015P1/Cap

BRUSH CAP (6/pkg)

Fits: Motor Brush

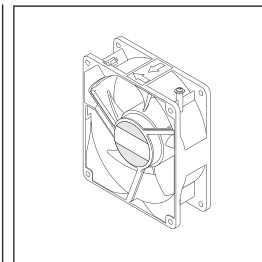


RPI Part #GXH039
OEM Part # 112-0094G1

HEATER

- 4.66" square x 1.25" wide
- 120VAC, 750W; Thermally protected
- Includes Heater, Connectors, and (3 pieces) Cable Tie (RPI Part #RPT083)

Fits: Heater/Fan Assembly

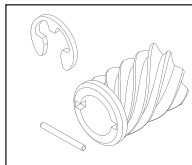


RPI Part #GXF012
OEM Part #652-0012P1

HEATER FAN (115V)

- 115VAC
- 4.69" square x 1.5" wide

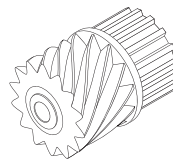
Fits: Heater/Fan Assembly



RPI Part #G XK006
OEM Part #112-0635G1

HELICAL GEAR KIT

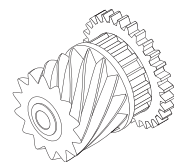
- Includes black plastic gear with stainless steel roll pin and E-ring
- Fits:** Drive Shaft



RPI Part #G XG007
OEM Part #303-0015P1

DRIVE GEAR

- Black plastic helical/pulley gear
- Fits:** Developer, Fixer, and Washer Racks



RPI Part #G XG008
OEM Part #115-0579G1

DRIVE GEAR

- Black plastic helical/pulley/spur gear
- Fits:** Dryer Racks

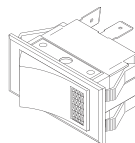
X- RAY UNITS

RPI Part #GXS016
OEM Part #632-0031P1

POWER SWITCH

- 15A @ 125VAC; On/Off
- Panel Mount; White body/Amber lens
- 1/4" Quick disconnect terminals

Fits: Control Panel **Model:** GX-770™ Intraoral

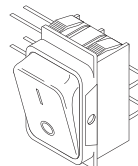


RPI Part #GXS017
OEM Part #632-0084P2

POWER SWITCH

- 16A @ 125VAC; On/Off
- PCB Mount; Black body

Fits: Control Panel **Model:** 765 DC Intraoral



RPI Part #GXS018
OEM Part #632-004P1

POWER SWITCH

- 15A @ 125VAC; On/Off
- Panel Mount; Black body
- 1/4" Quick disconnect terminals

Fits: Control Panel **Model:** Orthoralix® Panoramic

