



COALESCING FILTER ASSEMBLY (5 OZ.)

EXPLODED VIEW SHOWN



COALESCING FILTER ASSEMBLY (5 oz.)

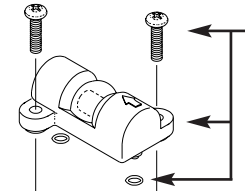
RPI Part #CMA021

Wilkerson Part #M16-03-FMO

• All parts also sold separately

• Includes: Differential Pressure Indicator (RPI Part #CMI015), Coalescing Filter Element (RPI Part #CMK024), Auto Float Drain (RPI Part #CMF016), O-ring and nut

Models: See chart below for manufacturer and Part #'s



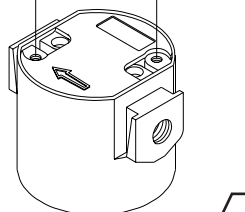
DIFFERENTIAL PRESSURE INDICATOR

RPI Part #CMI015

Wilkerson Part #DP2-01-000

• Replacement to fit Coalescing Filter Element (RPI Part #CMK024)
• Includes screws and O-rings

Models: See chart below for manufacturer and Part #'s



Coalescing Filter Element
Includes O-ring

RPI OFFERS A SELECTION OF COALESCING FILTER ELEMENTS WITH O-RING

COALESCING FILTER ELEMENT

RPI Part #CMK024

Wilkerson Part #MTP-95-548

• Type C; 0.01 micron; Red material; Includes filter element and O-ring
• Replacement to fit Coalescing Filter Assembly (RPI Part #CMA021)

Models: See chart below for manufacturer and Part #'s



COALESCING FILTER ELEMENT

RPI Part #CMK005

Wilkerson Part #MSP-95-988

• Type B; 0.5 micron; White material; Includes filter element and O-ring
• Replacement to fit Coalescing Filter Assembly (RPI Part #CMA021)

Models: See chart below for manufacturer and Part #'s



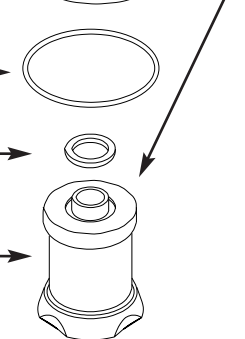
COALESCING FILTER ELEMENT

RPI Part #CMK026

Generic Brand

• Type C; 0.01 micron; Includes filter element and O-ring
• Replacement to fit Coalescing Filter Assembly (RPI Part #CMA021)

Models: See chart below for manufacturer and Part #'s



Auto Float Drain
Includes O-ring and Nut

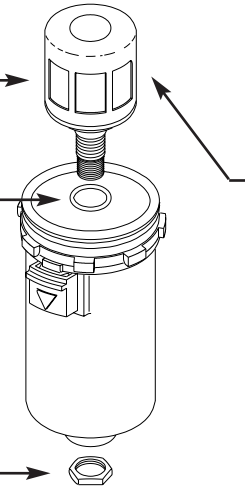
AUTO FLOAT DRAIN

RPI Part #CMF016

Wilkerson Part #GRP-95-981

• Replacement to fit Coalescing Filter Assembly (RPI Part #CMA021)
• Includes O-ring and nut

Models: See chart below for manufacturer and Part #'s



RPI PART #	DESCRIPTION	APOLLO	DENTALEZ®	JUN-AIR	MATRIX (AIMAX™)
CMA021	COALESCING FILTER ASSEMBLY (WILKERSON Part #M16-03-FMO) Assembly includes Coalescing Filter Element (RPI Part #CMK024)	ACA70305			77005010
CMK024	COALESCING FILTER ELEMENT (WILKERSON Part #MTP-95-548) Replacement filter (Type C, 0.01 micron: Red material) and O-ring to fit Coalescing Filter Assembly (RPI Part #CMA021)	ACA86050 (Type C, Wilkerson Filter only)	648-00209 (Type C, Wilkerson Filter only)	648-00209 (Type C, Wilkerson Filter only)	77005005 (Type C, Wilkerson Filter only)
CMK005	COALESCING FILTER ELEMENT (WILKERSON Part #MSP-95-988) Replacement filter (Type B, 0.5 micron: White material) and O-ring to fit Coalescing Filter Assembly (RPI Part #CMA021)	ACA86050 (Type B, Wilkerson Filter only)	648-00209 (Type B, Wilkerson Filter only)	648-00209 (Type B, Wilkerson Filter only)	77005005 (Type B, Wilkerson Filter only)
CMK026	COALESCING FILTER ELEMENT (GENERIC BRAND) Replacement filter (Type C, 0.01 micron) and O-ring to fit Coalescing Filter Assembly (RPI Part #CMA021)	ACA86050 (Type C, Generic Filter only)	648-00209 (Type C, Generic Filter only)	648-00209 (Type C, Generic Filter only)	77005005 (Type C, Generic Filter only)
CMI015	DIFFERENTIAL PRESSURE INDICATOR (WILKERSON Part #DP2-01-000) Replacement Differential Pressure Indicator to fit Coalescing Filter Element (RPI Part #CMK024)	AAP85210			
CMF016	AUTO FLOAT DRAIN (WILKERSON Part #GRP-95-981) Replacement Auto Float Drain to fit Coalescing Filter Element (RPI Part #CMK024)	ACA85210			



COALESCING FILTER ASSEMBLY (10 OZ.)

EXPLODED VIEW SHOWN



COALESCING FILTER ASSEMBLY (10 oz.)

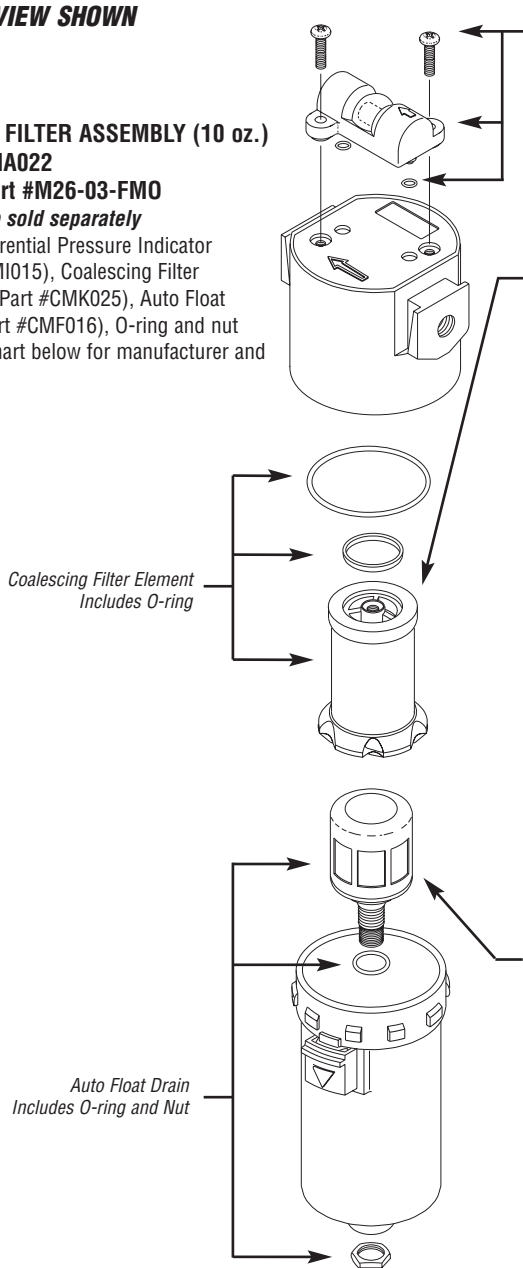
RPI Part #CMA022

Wilkerson Part #M26-03-FMO

• All parts also sold separately

- Includes Differential Pressure Indicator (RPI Part #CMI015), Coalescing Filter Element (RPI Part #CMK025), Auto Float Drain (RPI Part #CMF016), O-ring and nut

Models: See chart below for manufacturer and Part #'s



DIFFERENTIAL PRESSURE INDICATOR

RPI Part #CMI015

Wilkerson Part #DP2-01-000

- Replacement to fit Coalescing Filter Element (RPI Part #CMK025)
- Includes screws and O-rings

Models: See chart below for manufacturer and Part #'s



RPI OFFERS A SELECTION OF COALESCING FILTER ELEMENTS WITH O-RING

COALESCING FILTER ELEMENT

RPI Part #CMK025

Wilkerson Part #MTP-95-549

- Type C; 0.01 micron; Red material; Includes filter element and O-ring
- Replacement to fit Coalescing Filter Assembly (RPI Part #CMA022)

Models: See chart below for manufacturer and Part #'s



COALESCING FILTER ELEMENT

RPI Part #CMK006

Wilkerson Part #MSP-95-989

- Type B; 0.5 micron; White material; Includes filter element and O-ring
- Replacement to fit Coalescing Filter Assembly (RPI Part #CMA022)

Models: See chart below for manufacturer and Part #'s



COALESCING FILTER ELEMENT

RPI Part #CMK027

Generic Brand

- Type C; 0.01 micron; Includes filter element and O-ring
- Replacement to fit Coalescing Filter Assembly (RPI Part #CMA022)

Models: See chart below for manufacturer and Part #'s



AUTO FLOAT DRAIN

RPI Part #CMF016

Wilkerson Part #GRP-95-981

- Replacement to fit Coalescing Filter Assembly (RPI Part #CMA022)
- Includes O-ring and nut

Models: See chart below for manufacturer and Part #'s



RPI PART #	DESCRIPTION	APOLLO	DENTALEZ®	JUN-AIR	TECH WEST/TURBINE
CMA022	COALESCING FILTER ASSEMBLY (WILKERSON Part #M26-03-FMO) Assembly includes Coalescing Filter Element (RPI Part #CMK025)	ACA85215	645-45010	JA40815000	CFA-375
CMK025	COALESCING FILTER ELEMENT (WILKERSON Part #MTP-95-549) Replacement filter (Type C, 0.01 micron; Red material) and O-ring to fit Coalescing Filter Assembly (RPI Part #CMA022)	ACA86055 (Type C, Wilkerson Filter only)	645-45010 (Type C, Wilkerson Filter only)	JA40815000 (Type C, Wilkerson Filter only)	CFE-375 (Type C, Wilkerson Filter only)
CMK006	COALESCING FILTER ELEMENT (WILKERSON Part #MSP-95-989) Replacement filter (Type B, 0.5 micron; White material) and O-ring to fit Coalescing Filter Assembly (RPI Part #CMA022)	ACA86055 (Type B, Wilkerson Filter only)	645-45010 (Type B, Wilkerson Filter only)	JA40815000 (Type B, Wilkerson Filter only)	CFE-375 (Type B, Wilkerson Filter only)
CMK027	COALESCING FILTER ELEMENT (GENERIC BRAND) Replacement filter (Type C, 0.01 micron) and O-ring to fit Coalescing Filter Assembly (RPI Part #CMA022)	ACA86055 (Type C, Generic Filter only)	645-45010 (Type C, Generic Filter only)	JA40815000 (Type C, Generic Filter only)	CFE-375 (Type C, Generic Filter only)
CMI015	DIFFERENTIAL PRESSURE INDICATOR (WILKERSON Part #DP2-01-000) Replacement Differential Pressure Indicator to fit Coalescing Filter Assembly (RPI Part #CMA022)	AAP85210			CI-100
CMF016	AUTO FLOAT DRAIN (WILKERSON Part #GRP-95-981) Replacement Auto Float Drain to fit Coalescing Filter Assembly (RPI Part #CMA022)	ACA85210	645-45010 (Wilkerson Auto Float Drain only)		

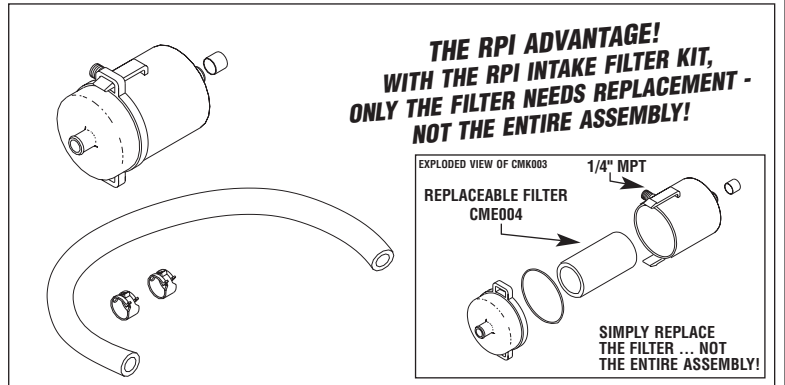


INTAKE FILTERS (FRESH AIR)



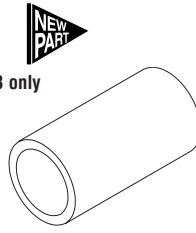
FRESH AIR INTAKE FILTER KIT
RPI Part #CMK003
OEM Part #PFM50955

- Includes filter housing, (2) Uniclamp (RPI Part #RPC442), PVC Tubing (RPI Part #RPT441), Cap (RPI Part #RPC443), and Filter (RPI Part #CME004)
- Model:** All Apollo



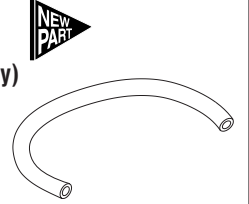
REPLACEMENT FILTER ELEMENT
RPI Part #CME004

- Apollo Part #PFM50955/Fits RPI Part #CMK003 only**
- Replacement for filter element (RPI Part #CMK003) **only**
 - Includes O-ring;
 - 1.63" OD x 2.96" long
- Model:** All Apollo



PVC TUBING - CLEAR (sold by the foot)
RPI Part #RPT441

- Apollo Part #PFM50955 (PVC tubing only)**
- .50" ID x .728" OD
 - Replacement for tubing included in Fresh Air Intake Filter Kit (RPI Part #CMK003)
- Model:** All Apollo



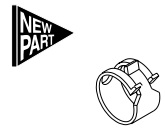
CAP
RPI Part #RPC443

- Apollo Part #PFM50955 (Cap only)**
- 6 per package; 1/2" ID; Black textured
 - Replacement for cap included in Fresh Air Intake Filter Kit (RPI Part #CMK003)
- Model:** All Apollo



UNICLAMP
RPI Part #RPC442

- Apollo Part #PFM50955 (Uniclamp only)**
- 6 per package; Fits 3/4" OD tubing
 - Replacement for uniclamp included in Fresh Air Intake Filter Kit (RPI Part #CMK003)
- Model:** All Apollo

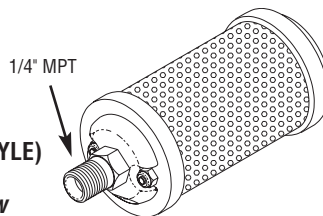


INTAKE FILTERS (AIR)



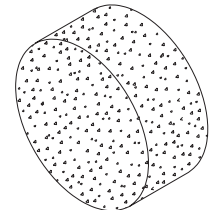
AIR INTAKE FILTER (METAL STYLE)
RPI Part #CMF002
OEM Part #'s - See Chart Below

- Auto Muffler MO2
- Models:** See chart below for manufacturer and Part #'s



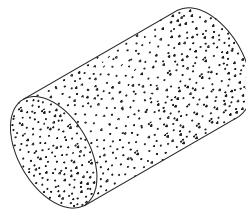
FOAM ELEMENT
RPI Part #CMF011
OEM Part #'s - See Chart Below

- Size: 4-1/4" diameter x 2" long
- Models:** See chart below for manufacturer and Part #'s



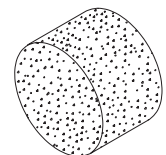
FOAM ELEMENT
RPI Part #CMF014
OEM Part #'s - See Chart Below

- Size: 2-1/2" dia. x 4-1/2" long
- Models:** See chart below for manufacturer and Part #'s



FOAM ELEMENT
RPI Part #CMF013
OEM Part #'s - See Chart Below

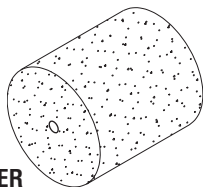
- Size: 2" diameter x 2" long
- Models:** See chart below for manufacturer and Part #'s



RPI PART #	DESCRIPTION	AIR TECHNIQUES	APOLLO	DCI	MATRIX (AIRMAX™)	MDT McKESSON	TECH WEST/TURBINE
CMF002	AIR INTAKE FILTER Auto Muffler MO2; Metal Housing	80050	PFM50955 (Auto Muffler MO2)				
CMF011	FOAM ELEMENT Size: 4-1/4" diameter x 2" long	60043-1					
CMF014	FOAM ELEMENT Size: 2-1/2" diameter x 4-1/2" long			2423		3-08-0632-10	
CMF013	FOAM ELEMENT Size: 2" diameter x 2" long				77007079		AAF-100

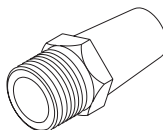


FOAM INSERT/PURGE FILTERS



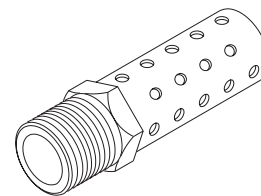
FOAM INSERT/PURGE FILTER

RPI Part #CMF012
OEM Part #'s - See Chart Below
• 5" diameter with center through hole x 5-1/2" long
• See chart below



PURGE MUFFLER

RPI Part #CMM017
OEM Part #'s - See Chart Below
• 1-1/4" long; 3/8" MPT with 9/16" hex
• See chart below

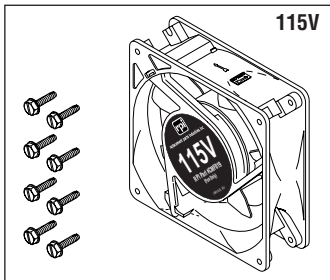


PURGE MUFFLER

RPI Part #CMM023
OEM Part #'s - See Chart Below
• 2-3/8" long; 1/2" MPT with 7/8" hex
• See chart below

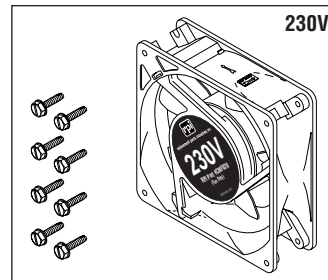
Table with 4 columns: RPI PART #, DESCRIPTION, AIR TECHNIQUES, TECH WEST/TURBINE. Rows include CMF012, CMM017, and CMM023.

COOLING FANS



COOLING FAN (115V)

RPI Part #CMF019
OEM Part #'s - See Chart Below
• 4-11/16" x 4-11/16"; Includes mounting hardware
• See chart below



COOLING FAN (230V)

RPI Part #CMF020
OEM Part #'s - See Chart Below
• 4-11/16" x 4-11/16"; Includes mounting hardware
• See chart below

Table with 9 columns: RPI PART #, DESCRIPTION, AIR TECHNIQUES, APOLLO, DCI, DENTALEZ®, JUN-AIR, MDT MCKESSON, TECH WEST/TURBINE. Rows include CMF019 and CMF020.

COMPRESSOR OIL

SAVE MONEY - BUY IT BY THE CASE
RPI Part #CML045
COMPRESSOR OIL
By the case - (12) 16 oz. bottles
with dispensing tubes and yorker caps



COMPRESSOR OIL - (1) 16 oz. Bottle

RPI Part #CML001
OEM Part #'s - See Chart Below
• Includes dispensing tube
• See chart below

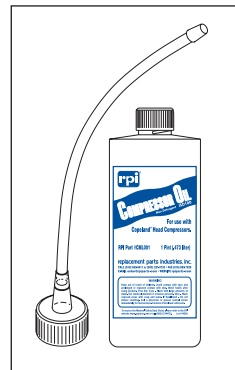


Table with 9 columns: RPI PART #, DESCRIPTION, AIR TECHNIQUES, APOLLO, DCI, DENTALEZ®, MATRIX (AIRMAX™), MDT MCKESSON, TECH WEST/TURBINE. Rows include CML001 and CML045.