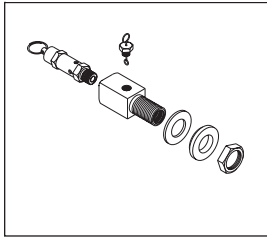




**SAFETY VALVE HOLDER AND MORE**



**SAFETY VALVE HOLDER KIT**  
RPI Part #TUK053  
OEM Part #N/A

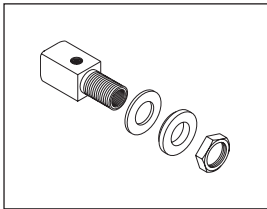


- Includes Safety Valve Holder (RPI Part #TUH031), Safety Release Valve (RPI Part #TUV011), Air Valve Jet (RPI Part #TUJ034) and Mounting Hardware (RPI Part #TUK055)
- Models: 1730E, 1730M, 2340E, 2340M, 2540E & 2540M

**SAFETY VALVE HOLDER KIT**  
RPI Part #TUK054  
OEM Part #N/A



- Includes Safety Valve Holder (RPI Part #TUH032), Air Valve Jet (RPI Part #TUJ033), Safety Release Valve (RPI Part #TUV011) and Mounting Hardware (RPI Part #TUK055)
- Models: 1730EK, 1730MK, 2340EK, 2340MK, 2540EK & 2540MK



**SAFETY VALVE HOLDER**  
RPI Part #TUH031  
OEM Part #CU841010

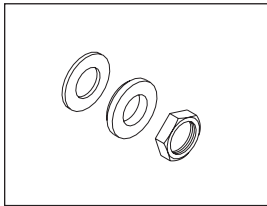


- Includes Safety Valve Holder and Mounting Hardware (RPI Part #TUK055)
- Models: 1730E, 1730M, 2340E, 2340M, 2540E & 2540M

**SAFETY VALVE HOLDER**  
RPI Part #TUH032  
OEM Part #CT841020



- Includes Safety Valve Holder and Mounting Hardware (RPI Part #TUK055)
- Models: 1730EK, 1730MK, 2340EK, 2340MK, 2540EK & 2540MK

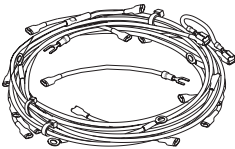


**MOUNTING HARDWARE (SAFETY VALVE HOLDER)**  
RPI Part #TUK055  
OEM Part #N/A



- Includes Teflon® shoulder washer, flat washer and hex nut
- Models: All Safety Valve Holders (RPI Part #TUH031 and RPI Part #TUH032)

**WIRE HARNESS • CONDENSATION COIL • CIRCUIT BREAKER • DRAIN VALVE ASSEMBLY**



**WIRE HARNESS**  
RPI Part #TUH043  
OEM Part #CU900012

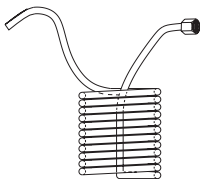


- Includes (1) Wire Nut (RPI Part # RPT018)
- Models: 1730M and 1730MK (Existing connections should accommodate most units manufactured after 1/93. However some modifications may be necessary.)

**WIRE HARNESS**  
RPI Part #TUH044  
OEM Part #CT900012



- Includes (1) Wire Nut (RPI Part # RPT018)
- Models: 2340M, 2340MK, 2540M & 2540MK (Existing connections should accommodate most units manufactured after 1/93. However some modifications may be necessary.)



**CONDENSATION COIL**  
RPI Part #TUC040  
OEM Part #CU836101

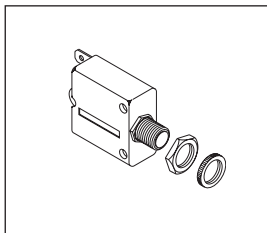


- Includes condensation coil and compression fittings
- Models: All 1730 series

**CONDENSATION COIL**  
RPI Part #TUC041  
OEM Part #CT836101



- Includes condensation coil and compression fittings
- Models: All 2340 and 2540 series



**CIRCUIT BREAKER (7A)**  
RPI Part #TUB048  
OEM Part #1910099

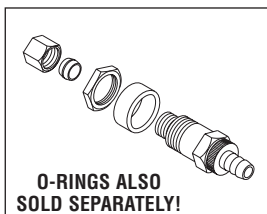


- Includes circuit breaker and mounting nuts
- Models: 1730 (220V) M & E

**CIRCUIT BREAKER (15A)**  
RPI Part #TUB047  
OEM Part #1910100



- Includes circuit breaker and mounting nuts
- Models: 1730 (110V) M, E, MK & EK; 1730 (220V) MK & EK; 2340 & 2540 (110V) M & E; 2340 & 2540 (220V) M, E, MK & EK; and, 3870 (220V) M & E



**DRAIN VALVE ASSEMBLY**  
RPI Part #TUV042  
OEM Part #CT844180

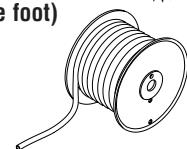


- Includes (1 each) O-ring (RPI Part #RPO386 & RPO387), compression fitting, and drain valve assembly
- Models: All 1730, 2340 and 2540 series

**DRAIN HOSE**  
RPI Part #RPH285  
OEM Part #02620016A (A=Sold by the foot)



- Sold by the foot; reel not included
- Models: All 1730, 2340 and 2540 series



O-RINGS ALSO SOLD SEPARATELY!