



PRESTIGE-KAVO 210006 OLD VERSION I, 210006 NEW VERSION II & 210006 CLASSIC VERSION III



INTRODUCING A NEW LINE OF PARTS FOR THE PRESTIGE • KAVO LINE OF STERILIZERS

A MESSAGE FROM THE PRESIDENT

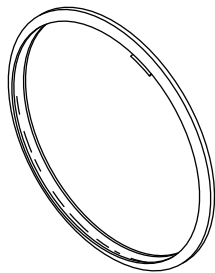
We are pleased to announce that as of January, 2010, we are the distributor of OEM parts for the Prestige line of autoclaves in the United States and Canada.

Please take a moment to look at the wide selection of parts we now carry for the classic model 210006 (also marketed under the KavoClave name), as well as the newer versions of the 210006 model, including those currently in production by Prestige Medical of England and distributed in the United States by Alfa Medical of Westbury, New York.

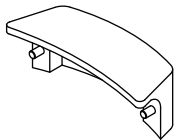
Best of all, the Prestige line of parts sold by RPI will be covered by RPI's guarantee that every part must meet the customer's 100% complete satisfaction. We will also offer the same excellent technical assistance for this line of autoclaves as we do for all other equipment we support. And, like all RPI parts, these parts will be in stock, ready to ship the same day the order is placed, Monday through Friday, 8:00 am - 4:30 pm (Pacific Time).

We look forward to supporting you with yet another great line of parts.

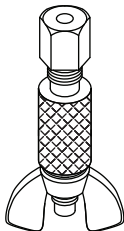
Sincerely,
Al Lapidus



**RPI PART #KVG001
OEM PART #219500**
DOOR GASKET
• 9.66" OD



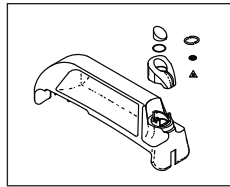
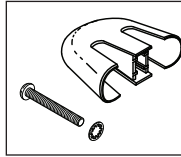
**RPI PART #KVC019
OEM PART #219577**
GASKET OFFSET DEVICE COVER
• Plastic



**RPI PART #KVP048
OEM PART #219722**
THERMO PORT
• Feed-thru port for sterilizer calibration

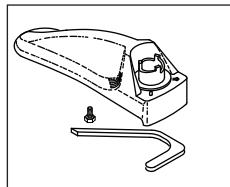
**RPI PART #KVH034
OEM PART #219696**

- HANDLE**
- Grey plastic
 - Includes mounting hardware



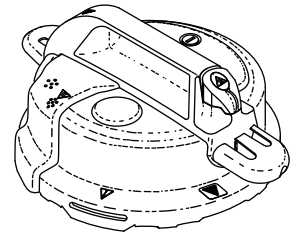
**RPI PART #KVH035
OEM PART #219698**

- HANDLE MOULDING**
- Package contains:
Valve Cap (RPI Part #KVC044)
 - Includes all parts as shown



**RPI PART #KVC018
OEM PART #219570**

- TOP COVER MOULDING**
- Plastic
 - Includes gasket and self sealing hex mounting bolt



**RPI PART #KVL046
OEM PART #219738**

- LID ASSEMBLY**
- Stainless steel
 - Package contains:
Gasket (RPI Part #KVG001),
Air Bleed Kit (RPI Part #KVK002),
Pressure Indicator Kit (RPI Part #KVK003),
Decal (Warning) (RPI Part #KVD013),
Decal (Hot Warning) (RPI Part #KVD014),
Depressurization Valve Kit (RPI Part #KVK043),
Handle (RPI Part #KVH034),
Handle Moulding (RPI Part #KVH035), and
Safety Valve (26 PSI) (RPI Part #KVV037)

**RPI PART #KVL045
OEM PART #219726**

- LID ASSEMBLY**
- Aluminum
 - Package contains:
Gasket (RPI Part #KVG001),
Air Bleed Kit (RPI Part #KVK002),
Pressure Indicator Kit (RPI Part #KVK003),
Decal (Warning) (RPI Part #KVD013),
Decal (Hot Warning) (RPI Part #KVD014),
Depressurization Valve Kit (RPI Part #KVK043),
Handle (RPI Part #KVH034), and
Handle Moulding (RPI Part #KVH035)



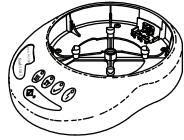
replacement parts industries, inc.

CALL (800) 221-9723 • FAX (818) 882-7028 • EMAIL order@rpiparts.com • WEBSITE www.rpiparts.com

Replacement Parts Industries, Inc. is the distributor of OEM parts for the Prestige (KAVO) line of autoclaves in the United States and Canada. All product names used in this document are trademarks or registered trademarks of their respective holders. WEB 01/10

Table Top Sterilizers

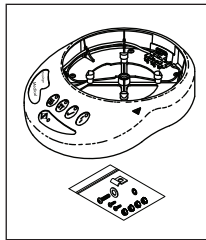
PRESTIGE•KAVO 210006 OLD VERSION I, 210006 NEW VERSION II & 210006 CLASSIC VERSION III



RPI PART #KVK042
OEM PART #219710

BASE KIT

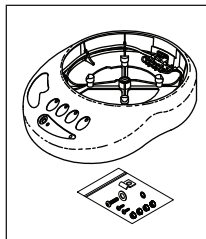
- Includes 134°C button decal
- All decals are installed
- Does not include Wire Kit
- Package contains:
AC Inlet Receptacle (RPI Part #RPR710),
Pillar Cap (RPI Part #KVC020), and
Foot (RPI Part #KVF038)



RPI PART #KVK022
OEM PART #219580

BASE KIT (220 VAC)

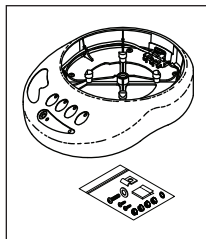
- Includes: Single thermofuse wiring and mounting hardware kit, and 126°C button decal
- All decals are installed
- Package contains: Wire Kit (RPI Part #KVK026), AC Inlet Receptacle (RPI Part #KVR004), Pillar Cap (RPI Part #KVC020), and Foot (RPI Part #KVF038)



RPI PART #KVK028
OEM PART #219665

BASE KIT (110 VAC)

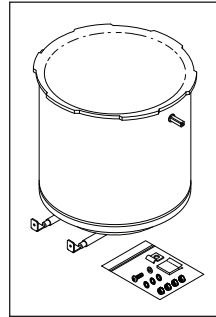
- Double thermofuse wiring
- Includes: Wire Kit (RPI Part #KVK030), AC Inlet Receptacle (RPI Part #RPR710), Pillar Cap (RPI Part #KVC020), Bumper (Foot) black (RPI Part #RPB640), and mounting hardware kit



RPI PART #KVK031
OEM PART #219670

BASE KIT (220 VAC)

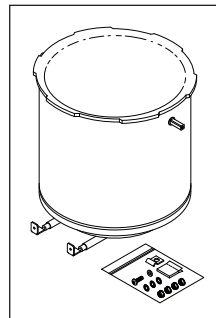
- Includes: Wire Kit (RPI Part #KVK026), AC Inlet Receptacle (RPI Part #RPR710), Pillar Cap (RPI Part #KVC020), Foot (RPI Part #KVF038), and mounting hardware kit



RPI PART #KVK015
OEM PART #219550

BODY KIT (230 VAC)

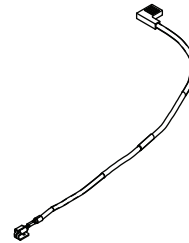
- Chamber Only
- Includes mounting hardware
- Integral heater element



RPI PART #KVK016
OEM PART #219552

BODY KIT (110 VAC)

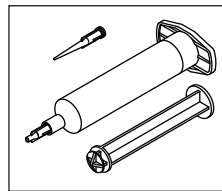
- Chamber Only
- Includes mounting hardware
- Integral heater element



RPI PART #KVF029
OEM PART #219667

THERMAL FUSE

- 152°C Thermofuse



RPI PART #RPC709
OEM PART #219302

HEAT SINK COMPOUND

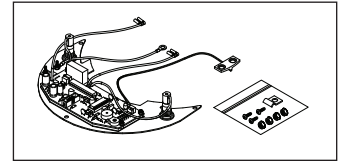
- Includes: Syringe and Dispensing Tip



RPI PART #KVC020
OEM PART #219578

PILLAR CAP

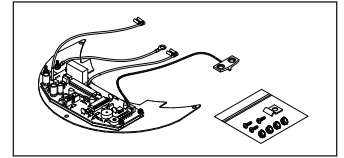
- 4 per package
- Vinyl



RPI PART #KVK023
OEM PART #219584

MODULE KIT (230 VAC)

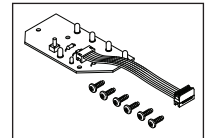
- Includes: Fuse holders with Fuse (RPI Part #RPF695), and mounting hardware



RPI PART #KVK025
OEM PART #219590

MODULE KIT (110 VAC)

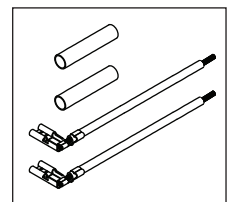
- Includes mounting hardware



RPI PART #KVA024
OEM PART #219585

LED/SWITCH ASSEMBLY

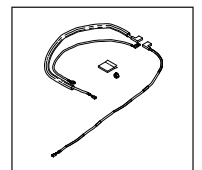
- Includes: PCB, Interface Cable, and mounting screws



RPI PART #KVK032
OEM PART #219689

WIRE REPAIR KIT

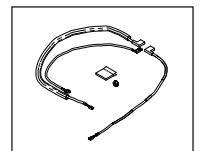
- Includes all parts as shown



RPI PART #KVK030
OEM PART #219669

WIRE KIT (110 VAC)

- (2) 152° C Thermofuse
- Includes White Tak and mounting nut



RPI PART #KVK026
OEM PART #219596

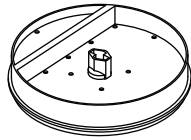
WIRE KIT (220 VAC)

- (1) 152° C Thermofuse
- Includes: White Tak and mounting nut

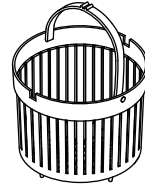


Table Top Sterilizers

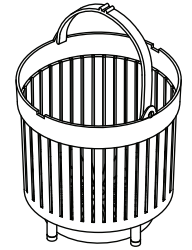
PRESTIGE•KAVO 210006 OLD VERSION I, 210006 NEW VERSION II & 210006 CLASSIC VERSION III



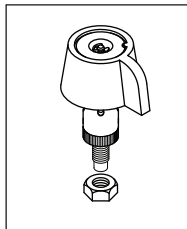
**RPI PART #KVT008
OEM PART #219293
INSTRUMENT TRAY**
• Plastic



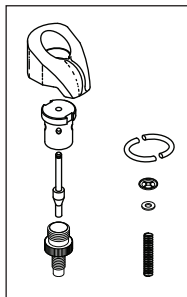
**RPI PART #KVB007
OEM PART #219292
INSTRUMENT BASKET (SMALL)**
• Plastic
• ~8.25" dia. x 6.50" height



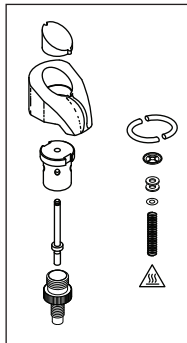
**RPI PART #KVB041
OEM PART #219708
INSTRUMENT BASKET (LARGE)**
• Plastic
• ~8.25" dia. x 7.63" height



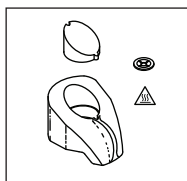
**RPI PART #KVK017
OEM PART #219569
DEPRESSURIZATION
VALVE KIT**
• Grey cap
• Includes mounting nut



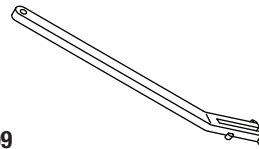
**RPI PART #KVK040
OEM PART #219707
DEPRESSURIZATION
VALVE KIT**
• White cap
• Package contains:
Valve Cap
(RPI Part #KVC044)
• Includes all parts as shown



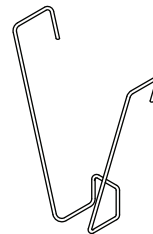
**RPI PART #KVK043
OEM PART #219711
DEPRESSURIZATION
VALVE KIT**
• White cap
• Package contains:
Valve Cap
(RPI Part #KVC044)
• Includes all parts as shown



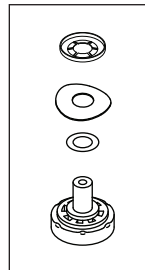
**RPI PART #KVC044
OEM PART #219713
VALVE CAP**
• White cap
• Package contains:
Decal (Hot Warning)
(RPI Part #KVD014)
• Includes all parts as shown



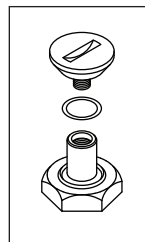
**RPI PART #KVF009
OEM PART #219294
LIFTER FORK**
• Plastic



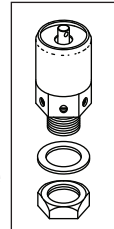
**RPI PART #KVS010
OEM PART #219295
V-SUPPORT**
• .12" dia. stainless steel wire



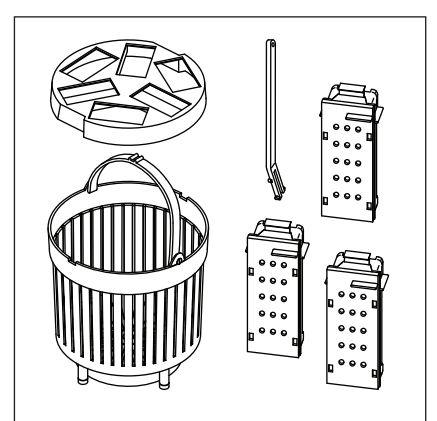
**RPI PART #KVK002
OEM PART #219202
AIR BLEED KIT**
• Includes all parts as shown



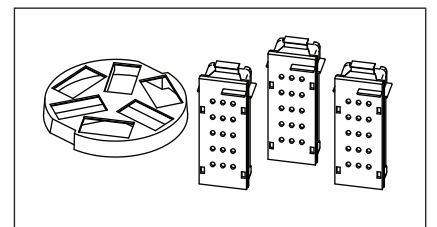
**RPI PART #KVK003
OEM PART #219203
PRESSURE INDICATOR KIT**
• Includes all parts as shown



**RPI PART #KVV037
OEM PART #219704
SAFETY VALVE (26 PSI)**
• Brass Body
• Includes panel mounting hardware
• Cracking pressure: 26 PSI



**RPI PART #KVK047
OEM PART #219728
CASSETTE RACK KIT**
• Includes all parts as shown
• Package contains: Instrument Basket
(Large) (RPI Part #KVB041), Lifter Fork
(RPI Part #KVF009), and (3) each
Cassette (RPI Part #KVC006)



**RPI PART #KVK039
OEM PART #219706
CASSETTE HOLDER KIT**
• Plastic cassette holder
• (3) Cassettes (RPI Part #KVC006)



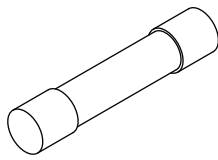
**RPI PART #KVC006
OEM PART #219291
CASSETTE**
• Plastic



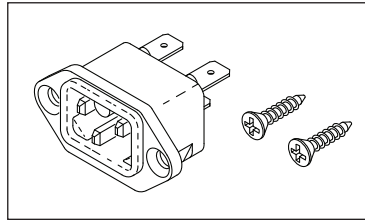
replacement parts industries, inc.
20338 Corisco Street • Chatsworth, California • 91311

PRESORTED STANDARD
U.S. POSTAGE PAID
VAN NUYS, CA
PERMIT NO. 2399

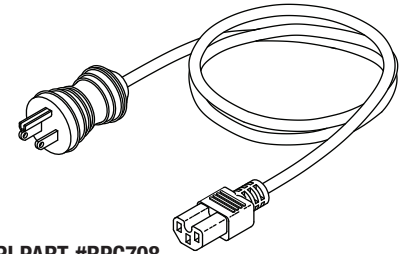
ADDRESS SERVICES REQUESTED



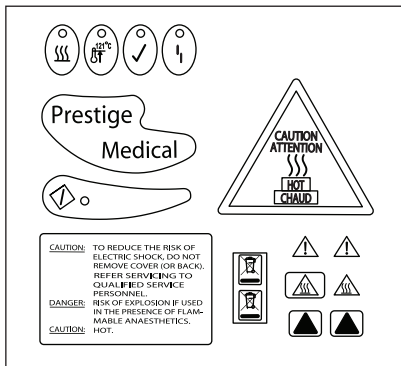
RPI PART #RPF695
OEM PART #219281
FUSE (10A)
• Ceramic "Fast Acting"



RPI PART #RPR710
OEM PART #219235
AC INLET RECEPTACLE
• 15A @ 125VAC
• Keyed mating feature



RPI PART #RPC708
OEM PART #219299
POWER CORD
• Hospital Grade; 6' lg.
• Keyed mating feature

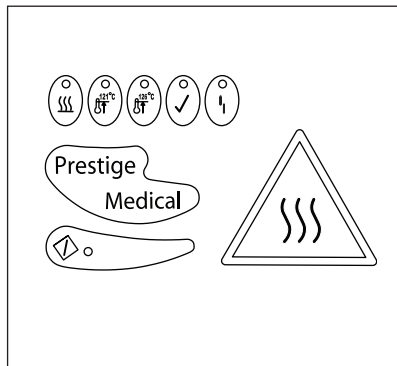


RPI PART #KVD036
OEM PART #219701

DECAL KIT

- Includes all parts as shown (121°C button decal)
- Package contains:
Decal (Warning) (RPI Part #KVD013) and
Decal (Hot Warning) (RPI Part #KVD014)

RPI PART #KVD013
OEM PART #219535
DECAL (WARNING)

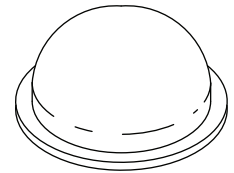


RPI PART #KVD033
OEM PART #219691/219600

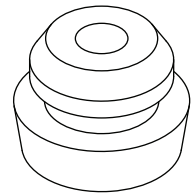
DECAL KIT

- Includes all parts as shown (both 121°C and 126°C button decals)

RPI PART #KVD014
OEM PART #219536
DECAL (HOT WARNING)



RPI PART #KVF021
OEM PART #219579
FRONT FOOT SUPPORT
• Rubber foot



RPI PART #KVF038
OEM PART #219705
FOOT
• 4 per package
• White Silicone