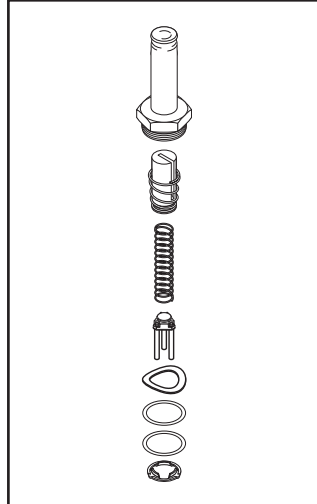




Models: 100, 200, 400/500, 700, 800, 3522, 3523, 3525, 3533, 3622, 3623, 3633, 4200MPS, 6900AMPS & MC3600

New Parts to fit Castle/Getinge® Bulk Sterilizers

CASTLE/GETINGE



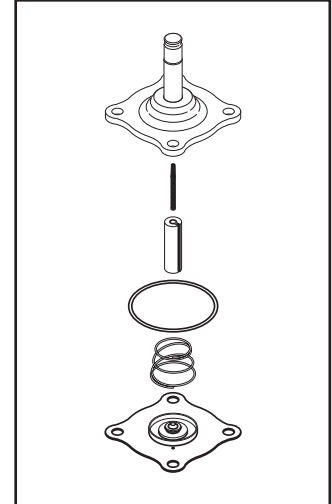
RPI Part #CSK048
OEM Part #68164

SOLENOID VALVE REPAIR KIT

- Includes all parts as shown

Fits: Solenoid Valve
(OEM Part #517338)

Models: 3522, 3525 & 3533



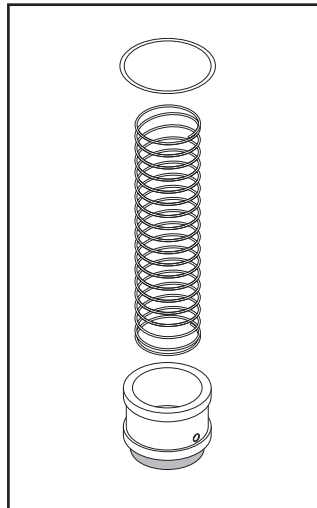
RPI Part #CSK050
OEM Part #54187

SOLENOID VALVE REPAIR KIT

- Includes all parts as shown

Fits: Solenoid Valve
(OEM Part #517343)

Models: 3525, 4200MPS & 6900AMPS



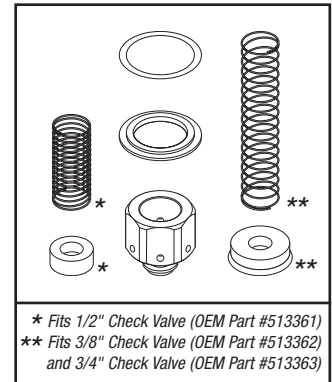
RPI Part #CSK065
OEM Part #513700

CHECK VALVE REBUILD KIT

- For use with a 3/4" or 1" NPT valve
- Includes all parts as shown

Fits: 3/4" or 1" NPT In-Line Check Valve

Models: 3522, 3523, 3525, 3533, 3622 & 3633



RPI Part #CSK066
OEM Part #513369

CHECK VALVE REBUILD KIT

- For use with a 1/2", 3/8" or 3/4" valve
- Includes all parts as shown

Fits: Check Valve (OEM Part #'s 513361, 513362 & 513363)

Models: 100, 200, 400/500, 700, 800, 3522, 3523, 3525, 3533, 3622, 3633, 4200MPS & 6900AMPS

* Fits 1/2" Check Valve (OEM Part #513361)
** Fits 3/8" Check Valve (OEM Part #513362) and 3/4" Check Valve (OEM Part #513363)


















Look Inside! →

RPI has them ...

**PM and Spare Parts Packages to fit
Castle/Getinge 3500 & 3600 Series
Bulk Sterilizers!**



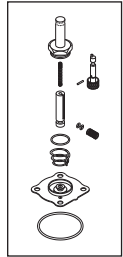
New PM and Spare Parts Packages

RPI PART #	OEM PART #	DESCRIPTION	RPI PART #'S INCLUDED IN KIT
 CSP036	61301602085	PM PKG (SOLENOID VALVES) Models: 3522, 3523 & 3533	AMK174, (2) AMK177, AMK183 & (2) CSK048
 CSP037	61301602090	PM PKG (SOLENOID VALVES) Models: 3525	AMK174, (2) AMK177, AMK183, CSD051, (2) CSK048 & CSK050
 CSP038	61301602091	PM PKG (FILTER & SCREEN) Models: 3522, 3523, 3525 & 3533	CSF052 & (2) CSS053
 CSP039	61301602087	PM PKG (STM TRAP & CHK VLV) Models: 3525	(3) CSK066 & (2) CST059
 CSP040	61301602092	PM PKG (STM TRAP & CHK VLV) Models: 3525	CSK066, CSV056, CSV057 & CSV058
 CSP068	61301602079	PM PKG (STM TRAP & CHK VLV) Models: 3622 & 3633	CSK060, CSK065, (3) CSK066 & CST059
 CSP069	No OEM Part # Available	PM PKG (STM TRAP & CHK VLV) Models: 3522, 3523, 3525 & 3533	(3) CSK066 & CSK067
 CSP070	No OEM Part # Available	PM PKG (STM TRAP & CHK VLV) Models: 3622 & 3633	CSK060, CSK065, (3) CSK066 & CSK067
 CSP041	61301602510	SPARE PARTS PACKAGE Models: 3525	AMK174, (2) AMK177, AMK183, CSD051, CSF052, CSG002, (3) CSK048, CSK050, (3) CSK066, CSR028, CSR029, CSS054, CSV056, CSV057 & CSV058
 CSP042	61301602498	SPARE PARTS PACKAGE Models: 3522	AMK174, (2) AMK177, AMK183, CSG002, (2) CSK048, (3) CSK066, CSR028, CSR029 & (2) CST059
 CSP043	61301602499	SPARE PARTS PACKAGE Models: 3523	AMK174, (2) AMK177, AMK183, CSF052, CSG002, (3) CSK048, (3) CSK066, CSR028, CSR029 & (3) CST059
 CSP044	61301602500	SPARE PARTS PACKAGE Models: 3533	AMK174, (2) AMK177, AMK183, CSF052, CSG002, CSK018, (2) CSK048, (3) CSK066, CSR028, CSR029 & (2) CST059
 CSP045	61301602501	SPARE PARTS PACKAGE Models: 3522	AMK174, (2) AMK177, AMK183, CSG001, (2) CSK048, (3) CSK066, CSR028, CSR029 & (2) CST059
 CSP046	61301602502	SPARE PARTS PACKAGE Models: 3523	AMK174, (2) AMK177, AMK183, CSF052, CSG001, (3) CSK048, (3) CSK066, CSR028, CSR029 & (3) CST059
 CSP047	61301602503	SPARE PARTS PACKAGE Models: 3533	AMK174, (2) AMK177, AMK183, CSF052, CSG001, CSK018, (2) CSK048, (3) CSK066, CSR028, CSR029 & (2) CST059

RPI Part #AMK174
OEM Part #56161

SOLENOID VALVE REPAIR KIT

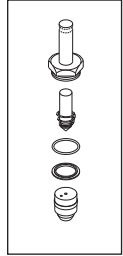
• Includes all parts as shown
Included in PM Pkg:
RPI Part #'s CSP036 & CSP037
Included in Spare Parts Pkg:
RPI Part #'s CSP041, CSP042, CSP043, CSP044, CSP045, CSP046 & CSP047



RPI Part #AMK177
OEM Part #61301601739

SOLENOID VALVE REPAIR KIT

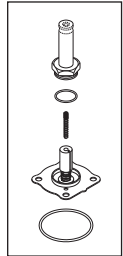
• Includes all parts as shown
Included in PM Pkg:
RPI Part #'s CSP036 & CSP037
Included in Spare Parts Pkg:
RPI Part #'s CSP041, CSP042, CSP043, CSP044, CSP045, CSP046 & CSP047



RPI Part #AMK183
OEM Part #54190

SOLENOID VALVE REPAIR KIT

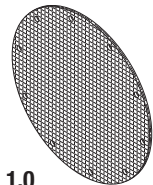
• Includes all parts as shown
Included in PM Pkg:
RPI Part #'s CSP036 & CSP037
Included in Spare Parts Pkg:
RPI Part #'s CSP041, CSP042, CSP043, CSP044, CSP045, CSP046 & CSP047



RPI Part #CSD051
OEM Part #517153

DIAPHRAGM REPLACEMENT 1.0

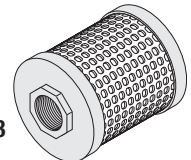
Included in PM Pkg:
RPI Part #'s CSP037
Included in Spare Parts Pkg:
RPI Part #'s CSP041



RPI Part #CSF052
OEM Part #61301600303

FILTER, AIR-IN

Included in PM Pkg:
RPI Part #'s CSP038
Included in Spare Parts Pkg:
RPI Part #'s CSP041, CSP043, CSP044, CSP046 & CSP047



RPI Part #CSG001
OEM Part #61301605016
 Old OEM Part #58398



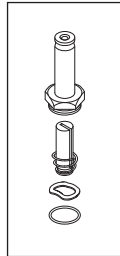
DOOR GASKET (20" x 20")
Included in Spare Parts Pkg:
 RPI Part #'s CSP045, CSP046
 & CSP047

RPI Part #CSG002
OEM Part #61301605017
 Old OEM Part #58397



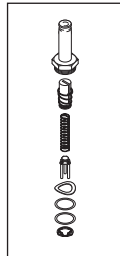
DOOR GASKET (16" x 16")
Included in Spare Parts Pkg:
 RPI Part #'s CSP041, CSP042,
 CSP043 & CSP044

RPI Part #CSK018
OEM Part #517295



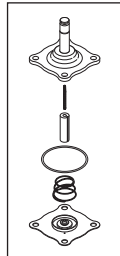
SOLENOID VALVE REPAIR KIT
 • Includes all parts as shown
Included in Spare Parts Pkg:
 RPI Part #'s CSP044 & CSP047

RPI Part #CSK048
OEM Part #68164



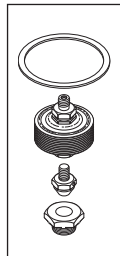
SOLENOID VALVE REPAIR KIT
 • Includes all parts as shown
Included in PM Pkg:
 RPI Part #'s CSP036 & CSP037
Included in Spare Parts Pkg:
 RPI Part #'s CSP041, CSP042,
 CSP043, CSP044, CSP045,
 CSP046 & CSP047

RPI Part #CSK050
OEM Part #54187



SOLENOID VALVE REPAIR KIT
 • Includes all parts as shown
Included in PM Pkg:
 RPI Part #'s CSP037
Included in Spare Parts Pkg:
 RPI Part #'s CSP041

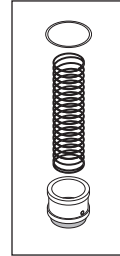
RPI Part #CSK060
OEM Part #27557



STEAM TRAP REBUILD KIT
 • Includes all parts as shown
Included in PM Pkg:
 RPI Part #'s CSP068 & CSP070



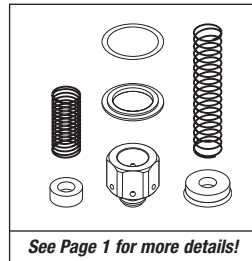
RPI Part #CSK065
OEM Part #513700



CHECK VALVE REBUILD KIT
 • Includes all parts as shown
Included in PM Pkg:
 RPI Part #'s CSP068 & CSP070



RPI Part #CSK066
OEM Part #513369

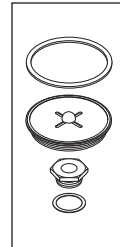


See Page 1 for more details!

CHECK VALVE REBUILD KIT
 • Includes all parts as shown
Included in PM Pkg:
 RPI Part #'s CSP039, CSP040, CSP068,
 CSP069 & CSP070

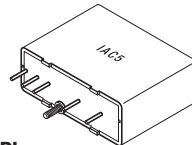
Included in Spare Parts Pkg: RPI Part #'s
 CSP041, CSP042, CSP043, CSP044,
 CSP045, CSP046 & CSP047

RPI Part #CSK067
OEM Part # (No OEM Part # Available)



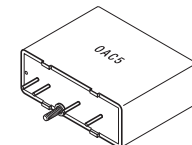
STEAM TRAP REBUILD KIT
 • Includes all parts as shown
 • Also available, complete
 Steam Trap (RPI Part #CST059)
Included in PM Pkg:
 RPI Part #'s CSP069 & CSP070

RPI Part #CSR028
OEM Part #86407



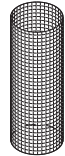
SOLID STATE RELAY
Included in Spare Parts Pkg:
 RPI Part #'s CSP041, CSP042,
 CSP043, CSP044, CSP045,
 CSP046 & CSP047

RPI Part #CSR029
OEM Part #86408



SOLID STATE RELAY
Included in Spare Parts Pkg:
 RPI Part #'s CSP041, CSP042,
 CSP043, CSP044, CSP045,
 CSP046 & CSP047

RPI Part #CSS053
OEM Part #43907



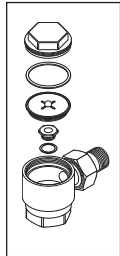
SCREEN FILTER
Included in PM Pkg:
 RPI Part #'s CSP038

RPI Part #CSS054
OEM Part #45690



SCREEN, DETERGENT
Included in Spare Parts Pkg:
 RPI Part #'s CSP041

RPI Part #CST059
OEM Part #61301602492



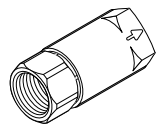
STEAM TRAP
 • Includes all parts as shown
Included in PM Pkg:
 RPI Part #'s CSP039 & CSP068
Included in Spare Parts Pkg:
 RPI Part #'s CSP042, CSP043,
 CSP044, CSP045, CSP046 &
 CSP047

RPI Part #CSV056
OEM Part #14010



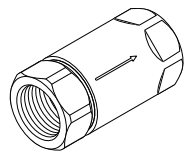
CHECK VALVE – 1/4"
Included in PM Pkg:
 RPI Part #'s CSP040
Included in Spare Parts Pkg:
 RPI Part #'s CSP041

RPI Part #CSV057
OEM Part #19114



CHECK VALVE – 1/2"
Included in PM Pkg:
 RPI Part #'s CSP040
Included in Spare Parts Pkg:
 RPI Part #'s CSP041

RPI Part #CSV058
OEM Part #08045



CHECK VALVE – 3/4"
Included in PM Pkg:
 RPI Part #'s CSP040
Included in Spare Parts Pkg:
 RPI Part #'s CSP041



LIST OF RPI PARTS TO FIT CASTLE/GETINGE® BULK STERILIZERS

Table with 4 columns: RPI PART #, OEM PART #, DESCRIPTION, MODELS. Rows include AMK174, AMK177, AMK183, CSC063, CSC064, CSD051, CSF052, CSG001, CSG002, CSG003, CSK018, CSK019, CSK020, CSK022, CSK023, CSK025, CSK048, CSK050, CSK060, CSK061, CSK062, CSK065, CSK066, CSK067, CSP036, CSP037, CSP038, CSP039, CSP040.



Table with 4 columns: RPI PART #, OEM PART #, DESCRIPTION, MODELS. Rows include CSP041, CSP042, CSP043, CSP044, CSP045, CSP046, CSP047, CSP068, CSP069, CSP070, CSR028, CSR029, CSS053, CSS054, CST059, CSV004, CSV005, CSV007, CSV008, CSV009, CSV010, CSV011, CSV012, CSV014, CSV033, CSV034, CSV035, CSV056, CSV057, CSV058.

RPI PM Packages and Spare Parts Packages shown in BOLD are composed of RPI Parts that are also sold separately. Please see pages 2-3 for more information. RPI Part #'s shown in BOLD ITALICS are also available in one or more PM Package or Spare Parts Package. Please see pages 2-3 for more information.