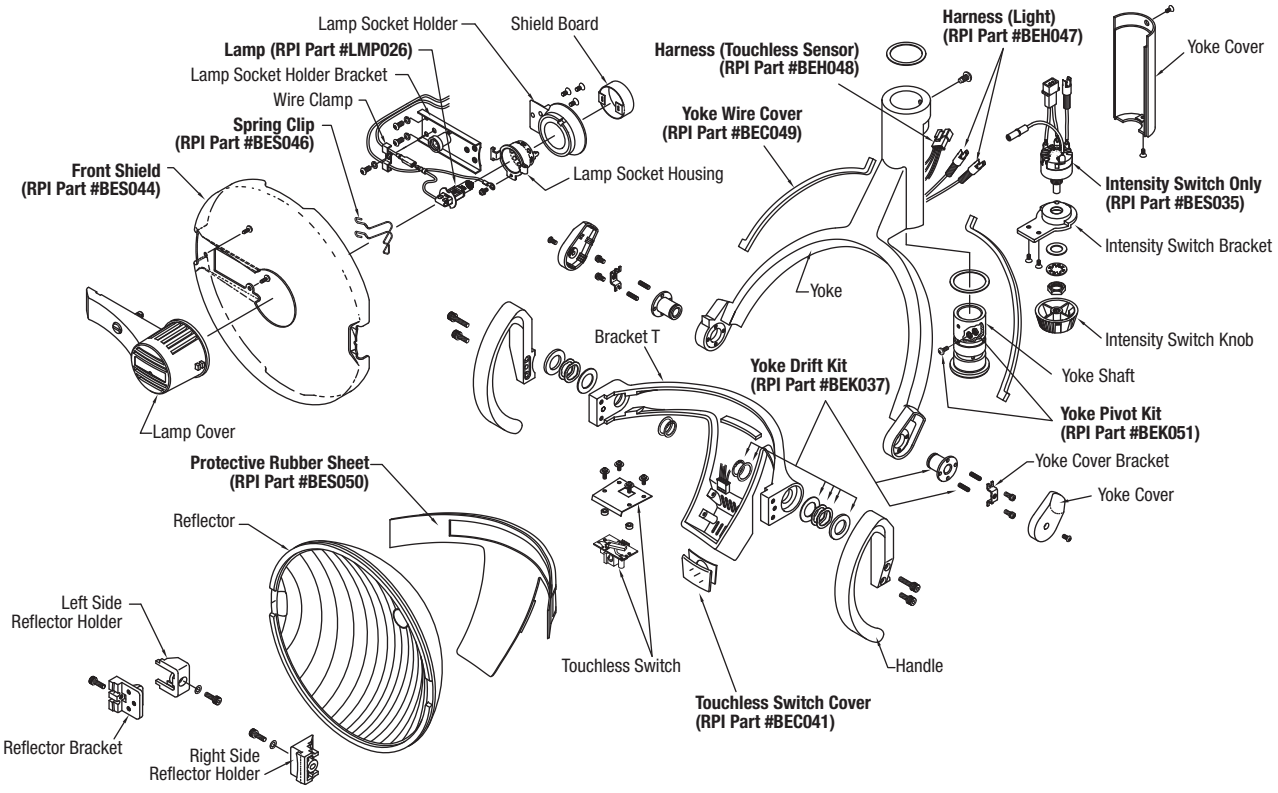




New Parts to fit Belmont Clesta 501, 502 & 505 Dental Lights!

DENTAL LIGHTS - BELMONT

Belmont Clesta Light Head Exploded View



RPI PART #	OEM PART #	DESCRIPTION
BEC041	501054	TOUCHLESS SWITCH COVER – Includes: Touchless Switch Cover, and Die Cut 2-Sided Tape
BEC049	501026	YOKE WIRE COVER – (2) per package
BEH047	501016, 501043, 501047 & 501048	HARNESS (LIGHT) – Includes: (2) 1P-Connector Female, (2) Silicon Tubing, Harness I with Connector Pin and Cover, and Harness H with Connector Pin
BEH048	501044, 501045, 501046 & 501049	HARNESS (TOUCHLESS SWITCH) – Includes: (2) Silicone Tubing, 4P-Connector (Male & Female), and Harness G set
BEK037	501031, 501032, 501033, 501034, 501035, 501041 & 501042	YOKE DRIFT KIT – (2) Sets per package; Includes: (4) Set Screw (M3 x 10), (4) Wave Washer (M14), (2) Shaft (Bushing), (2) Washer (Zinc Steel-M14), (2) Washer (Brass-M14), (2) Washer (Plastic) (M14), and (2) Retaining Ring (External-M14)
BEK051	501003, 501004, 501005, 501006 & 501008	YOKE PIVOT KIT – Includes: (2) Screw (M3 x 5), External Tooth Lockwasher, Hex Nut (M3), Washer (Plastic), and Yoke Screw
BES035	501009	INTENSITY SWITCH – Includes: Intensity Switch, Mounting Hardware, 1P-Connectors (Female, Male & Harness C & D Sets), 2P-Connectors (Female & Harness B Set), Harness with Connector Pin, and Harnesses C & D with Connector Pins
BES044	501071	FRONT SHIELD
BES046	501073	SPRING CLIP
BES050	501058	PROTECTIVE RUBBER SHEET
LMP026	501074	LAMP – Halogen; 24VDC, 60W; Black tip on bulb



replacement parts industries, inc.

CALL (800) 221-9723 • FAX (818) 882-7028 • EMAIL order@riparts.com • WEBSITE www.riparts.com

The above parts are manufactured by Replacement Parts Industries, Inc. to fit Belmont equipment. All product names used in this document are trademarks or registered trademarks of their respective holders. Show 10/12

SECTION
4
PAGE
1206
UPDATED
10/12

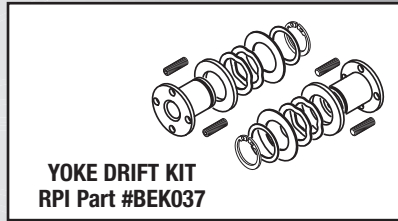
NEW!

**RPI Kits to fit Belmont
Clesta 501, 502 & 505
Dental Lights!**

Ever started a repair job but overlooked ordering a small screw or washer?

Worries over! For your convenience, RPI has 4 new Kits with all the parts needed to help you service the Belmont Clesta Dental Lights.

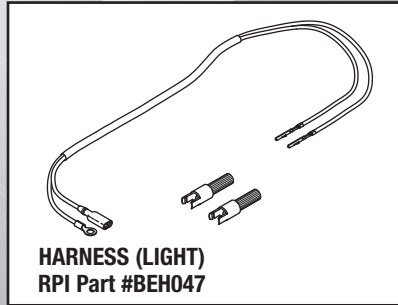
It's the
rpi
Advantage!®



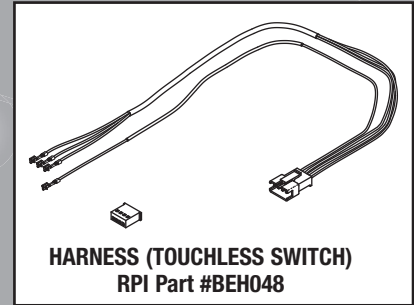
YOKE DRIFT KIT
RPI Part #BEK037



YOKE PIVOT KIT
RPI Part #BEK051



HARNESS (LIGHT)
RPI Part #BEH047



HARNESS (TOUCHLESS SWITCH)
RPI Part #BEH048

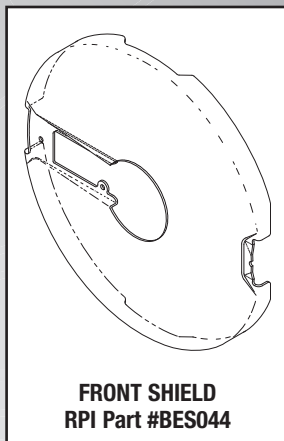
rpi replacement parts industries, inc.
20338 Corisco Street • Chatsworth, California • 91311

PRESORTED STANDARD
U.S. POSTAGE PAID
VAN NUYS, CA
PERMIT #2399

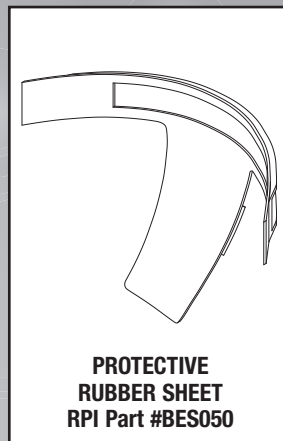
• Address Service Requested •

**New Parts to fit
Belmont Clesta
501, 502 & 505
Dental Lights!**

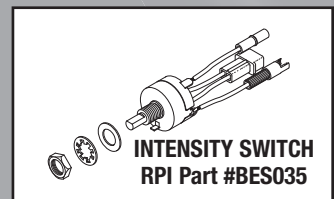
**If you like our
Black Tip Bulb ...
then you'll really
like all these
new parts & kits ...**



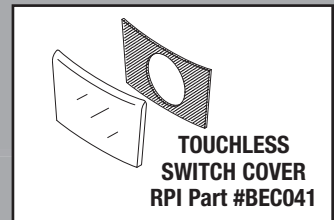
FRONT SHIELD
RPI Part #BES044



**PROTECTIVE
RUBBER SHEET**
RPI Part #BES050



INTENSITY SWITCH
RPI Part #BES035



**TOUCHLESS
SWITCH COVER**
RPI Part #BEC041

**To fit the
Belmont Clesta 501, 502 & 505 Dental Lights!**