



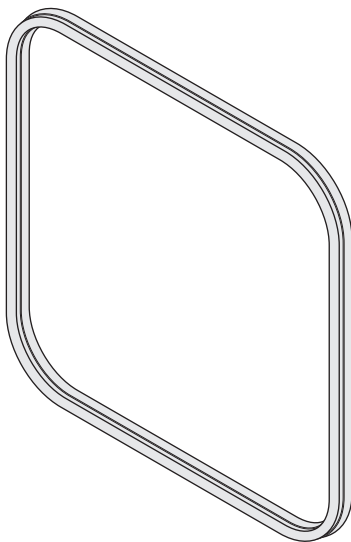
## New Chamber Seals and Pressure Gauges to fit AMSCO/STERIS® Century V116 & V120 Sterilizers!

**AMSCO/STERIS®**

### New Chamber Seals!



CROSS SECTION  
SHOWN ACTUAL SIZE



**RPI Part #AMG207**  
**OEM Part #146660-159**

**CHAMBER SEAL**

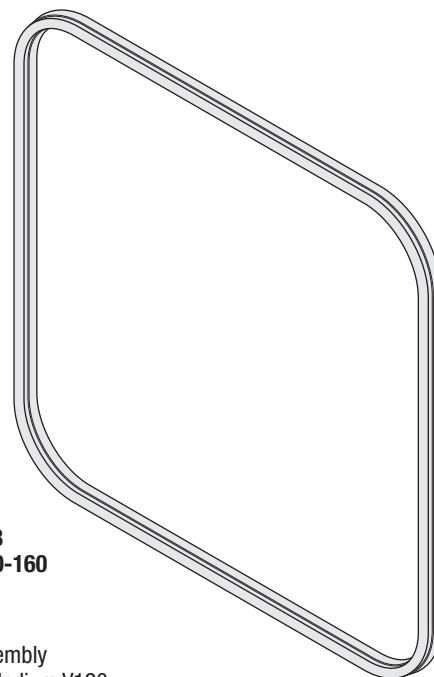
- 16" x 16"

**Fits:** Chamber Assembly

**Models:** Century Medium V116



CROSS SECTION  
SHOWN ACTUAL SIZE



**RPI Part #AMG208**  
**OEM Part #146660-160**

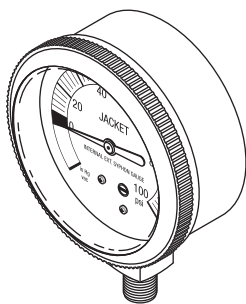
**CHAMBER SEAL**

- 20" x 20"

**Fits:** Chamber Assembly

**Models:** Century Medium V120

### New Pressure Gauges!



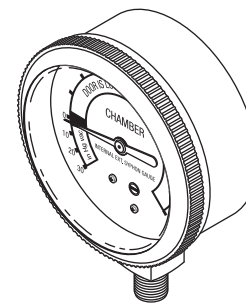
**RPI Part #AMG244**  
**OEM Part #7871-051**

**PRESSURE GAUGE (JACKET)**

- 2.5" Dial
- Scale: 30 in. Hg Vac to 0 PSI (unmarked) and 0 – 100 PSI (marked)
- Dial face: White with black characters
- 1/8" MPT bottom mount
- Zero adjustment

**Fits:** Jacket

**Models:** Century Medium V116 and V120



**RPI Part #AMG245**  
**OEM Part #7872-051**

**PRESSURE GAUGE (CHAMBER)**

- 2.5" Dial
- Scale: 30 in. Hg Vac to 0 PSI (marked) and 0 – 100 PSI (unmarked)
- Dial face: White with black characters
- 1/8" MPT bottom mount
- Zero adjustment

**Fits:** Chamber

**Models:** Century Medium V116 and V120



**replacement parts industries, inc.**

CALL (800) 221-9723 • FAX (818) 882-7028 • EMAIL [order@rpiparts.com](mailto:order@rpiparts.com) • WEBSITE [www.rpiparts.com](http://www.rpiparts.com)

The above parts are manufactured by Replacement Parts Industries, Inc. to fit AmSCO/Steris® equipment. All product names used in this document are trademarks or registered trademarks of their respective holders. Web 05/12



**replacement parts industries, inc.**

20338 Corisco Street • Chatsworth, California • 91311

PRESORTED STANDARD  
U.S. POSTAGE PAID  
VAN NUYS, CA  
PERMIT NO. 2399

ADDRESS SERVICES REQUESTED

**New Chamber Seals and  
Pressure Gauges to fit  
AMSCO/STERIS®  
Century V116 & V120!**

## List of RPI Parts to fit AMSCO/STERIS® Century V116 & V120 Sterilizers!

RPI PART #	OEM PART #	DESCRIPTION	CENTURY V116	CENTURY V120
AMA045	P026836-091	3/8" BONNET & SYLPHON	•	•
AMA055	P028267-091	3/8" VALVE STEM ASSEMBLY	•	•
AMB042	P035880-091	BELLOWS	•	•
AME200	129360-802	FILTER ELEMENT	•	•
AME233	764326-673	STRAINER ELEMENT (3/4")	•	•
AMF117	P006750-044	90 DEGREE ELBOW ADAPTOR	•	•
AMG207	146660-159	CHAMBER SEAL	•	•
AMG208	146660-160	CHAMBER SEAL	•	•
AMG244	7871-051	PRESSURE GAUGE (JACKET)	•	•
AMG245	7872-051	PRESSURE GAUGE (CHAMBER)	•	•
AMK111	P754359-001	3/8" PRV KIT	•	•
AMK183	P764326-482	SOLENOID VALVE REPAIR KIT	•	•
AMK188	P764080-001	STEAM TRAP REPAIR KIT	•	•
AMK230	10278-091 (Complete Check Valve)	CHECK VALVE REBUILD KIT (1/4")	•	•
AMK231	764319-608 (Disk only)	CHECK VALVE REBUILD KIT (1/2")	•	•
AMK232	764326-663 (Strainer) & 764326-727 (O-Ring)	STRAINER ELEMENT (1/2")	•	•
AMP214	764326-646	PM PACK (MISCELLANEOUS)	•	•
AMS052	P005685-061	3/8" VALVE SEAT	•	•
AMS114	P009276-041	SLOTTED ROUND HEAD SCREW (25/pkg)	•	•
AMS115	P003969-041	SLOTTED ROUND HEAD SCREW (25/pkg)	•	•
AMS202	150828-459	STRAINER (1/2")	•	•
AMS203	47708-091	STRAINER (3/4")	•	•
AMT187	P129222-001	STEAM TRAP ASSEMBLY	•	•
AMV201	93918-013	SAFETY VALVE (50 PSI)	•	•
AMV205	93918-212	BALL VALVE (1/4")	•	•
AMV206	93918-066	BALL VALVE (3/4")	•	•
AMV228	10278-091	CHECK VALVE (1/4")	•	•
AMV229	150822-354	CHECK VALVE (1/2")	•	•
AMX218	136809-711, 136809-844, 764328-456 (16" Kit with Plumbing) & 764328-457 (20" Kit with Plumbing)	HEAT EXCHANGER	•	•
CSK050	P764326-621	SOLENOID VALVE REPAIR KIT	•	•
RPF050	764317-825	FUSE (4A, 250V) - FAST ACTING (5/pkg)	•	•
RPF067	764317-463	FUSE (5A, 250V) - TIME DELAY (5/pkg)	•	•
RPT113	(No OEM Part # Available)	MAX REGISTER THERMOMETER	•	•

as of May 2012

FAX: (818) 882-7028 • E-MAIL: [order@rpiparts.com](mailto:order@rpiparts.com) • WEBSITE: [www.rpiparts.com](http://www.rpiparts.com)