



replacement parts industries, inc.

CALL 800-221-9723 or 818-882-8611 • FAX 818-882-7028

E-MAIL: techsupport@rpiparts.com • WEBSITE: www.rpiparts.com

"The Alternate Source"

LFII & LFIII LIGHT HEAD FOCUS PROCEDURE

WARNING

Light Assembly Adjustment (or Verification)

To prevent the light head from overheating and causing damage to components (i.e. Plastic Handle Assembly (RPI Part #PCA805) and Lens Splash Shield (RPI Part #PCL613), the light head should NOT be pointed up towards the ceiling for extended periods of time. The Lamp must be per OEM's recommendations (25V, 150W MAX) and the light assembly should be properly adjusted (or verified) to the optimal focal pattern. This will ensure ideal oral illumination and minimize excessive heat generation. This adjustment should be performed whenever the focus lamp assembly position is changed or if it's removed.

Focal Adjustment and Verification

Focal adjustment must be performed upon replacement of the following parts: Light Socket (RPI Part #PCS607), Reflector Pivot Bushing Kit (RPI Part #PCB623), Focus Spring (RPI Part #PCS687) and Insulators (RPI Part #PCI652 and PCI806). This adjustment should be verified upon occasion to ensure proper operation.

LIGHT ASSEMBLY & FOCAL ADJUSTMENT PROCEDURE

1. Turn the two Focus Screws clockwise (tighten) until both screws are tight, then set the face of the light head ~27" above the pattern on page 2 of these instructions (see Figure 1).
2. The pattern should be partially overlapped (see Figure 2).
3. Turn each Focus Screw counterclockwise (loosen) equally one turn at a time until the patterns are superimposed over each other creating one optimum pattern (see figure 1). When the pattern is properly adjusted, the pattern will not shift when the top and/or bottom half of the light is blocked. Use a piece of cardboard or heavy paper etc. to block the light in the performance of this test.
4. If the pattern shifts when one half of the light is blocked, further adjustment of Focus Screws are necessary.
5. If pattern shifts in an irregular manner (see Figure 3), turn only one Focus Screw until the patterns are parallel and adjust pattern until the "optimum pattern" has been achieved as described in Step #3.

LIGHT ASSEMBLY

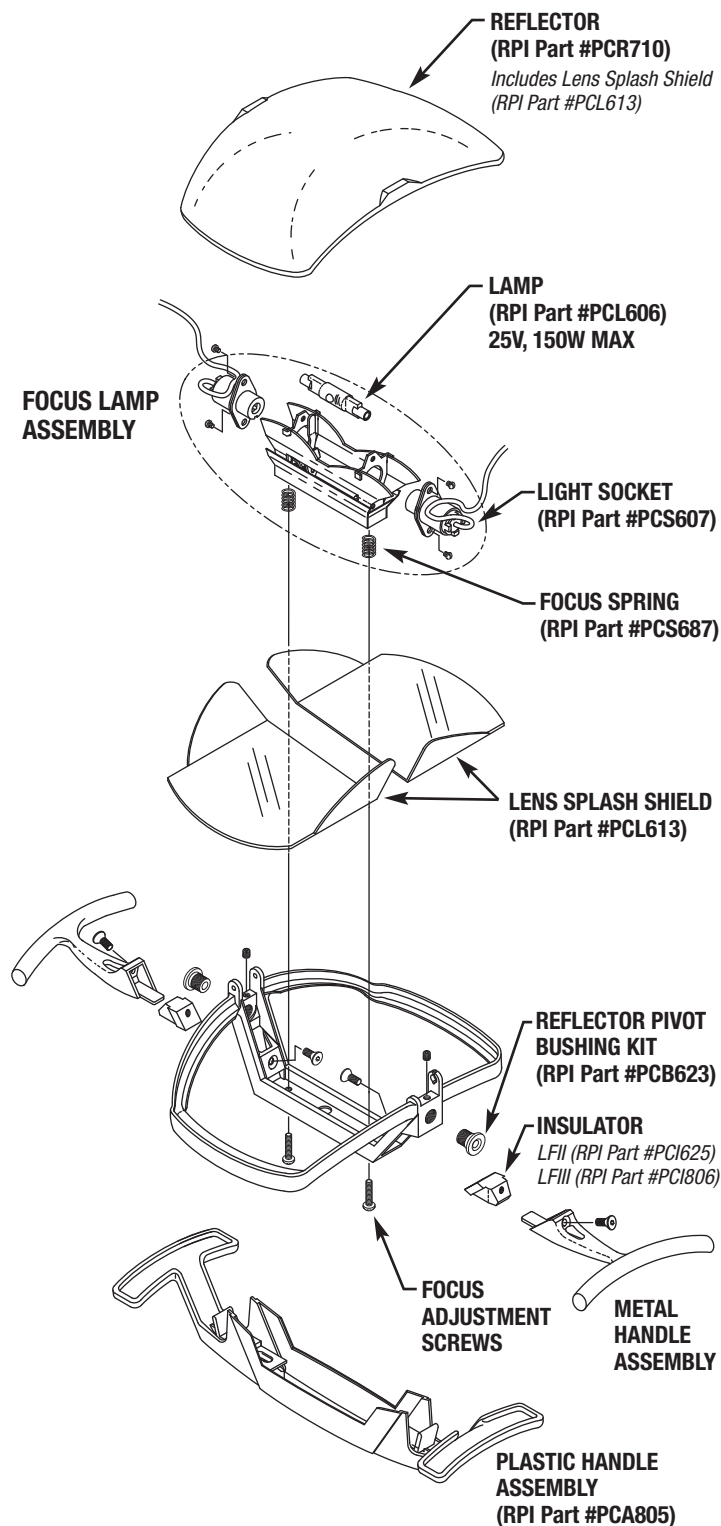


FIGURE 1 Full sized 3" x 8" Box with light adjustment pattern. Properly focused light pattern should roughly follow this shape when the face of the light head is located ~27" above this pattern.

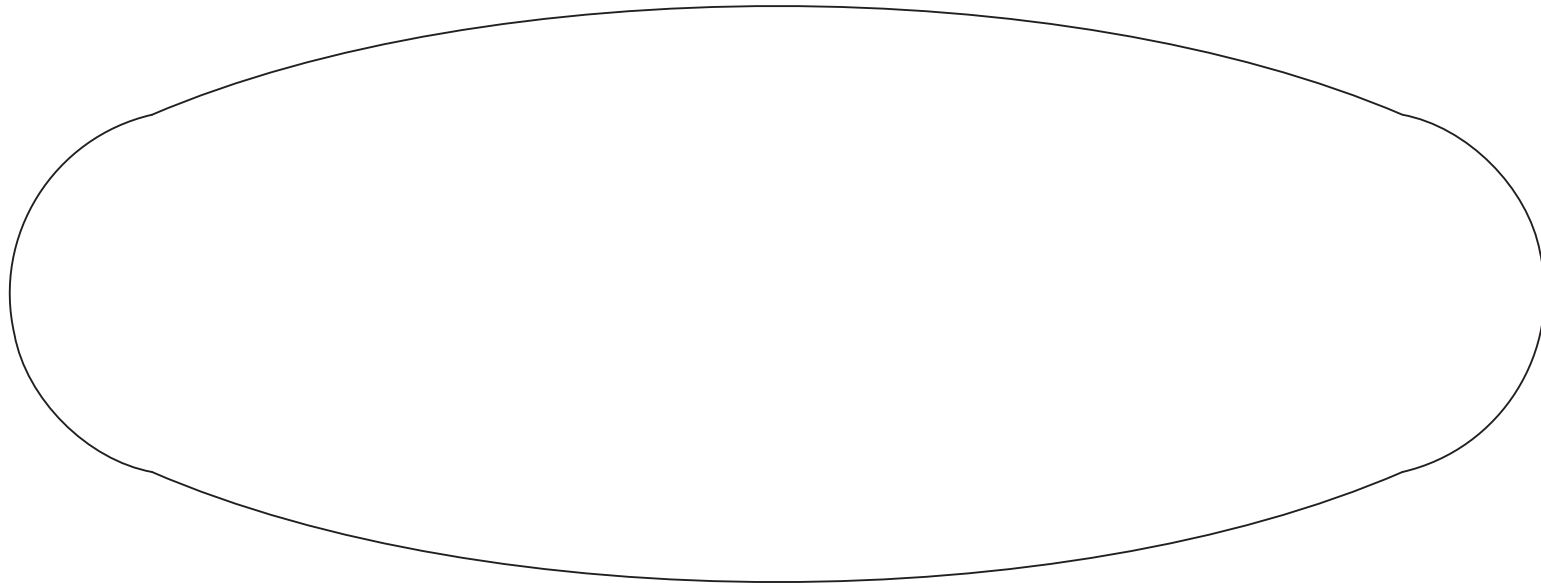


FIGURE 2

Unadjusted partially overlapped pattern.

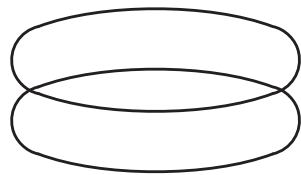


FIGURE 3

Irregular pattern, adjust only one Focus Screw until patterns are parallel.

