



replacement parts industries, inc.

A Healthcare Components Group Company

CALL 800-221-9723 or 818-882-8611 • FAX 818-882-7028

E-MAIL: techsupport@rpiparts.com • WEBSITE: www.rpiparts.com

MIK336 SLIDE KIT INSTALLATION INSTRUCTIONS

This slide kit contains both pop rivets and screws with Nylok® nuts to attach the slides to the foot section weldment – using the screws will make the disassembly process easier in the future.

REMOVAL

1. Raise TILT UP all the way.
2. Unplug the chair power cord from the wall outlet. See “WARNING” note below.



WARNING: Disconnect the power from the chair before removing covers/shrouds or making any repairs to prevent the possibility of electrical shock, severe personal injury, or death.

3. Loosen (2) knobs to remove the debris tray if installed (*see Figure 1*).
4. Disassemble the threaded brake shaft by removing the (2) outer nuts and backing off the (2) inner nuts several inches. Hold down the brake release lever and remove the threaded brake shaft from the foot section weldment. Retain shaft and all removed hardware for reuse later (*see Figure 2*).
5. Remove the brake lever spring and retain for later use.

CAUTION: Use care when removing the brake lever spring as it is still compressed and may pop out of the holder with some force (*see Figure 2*).

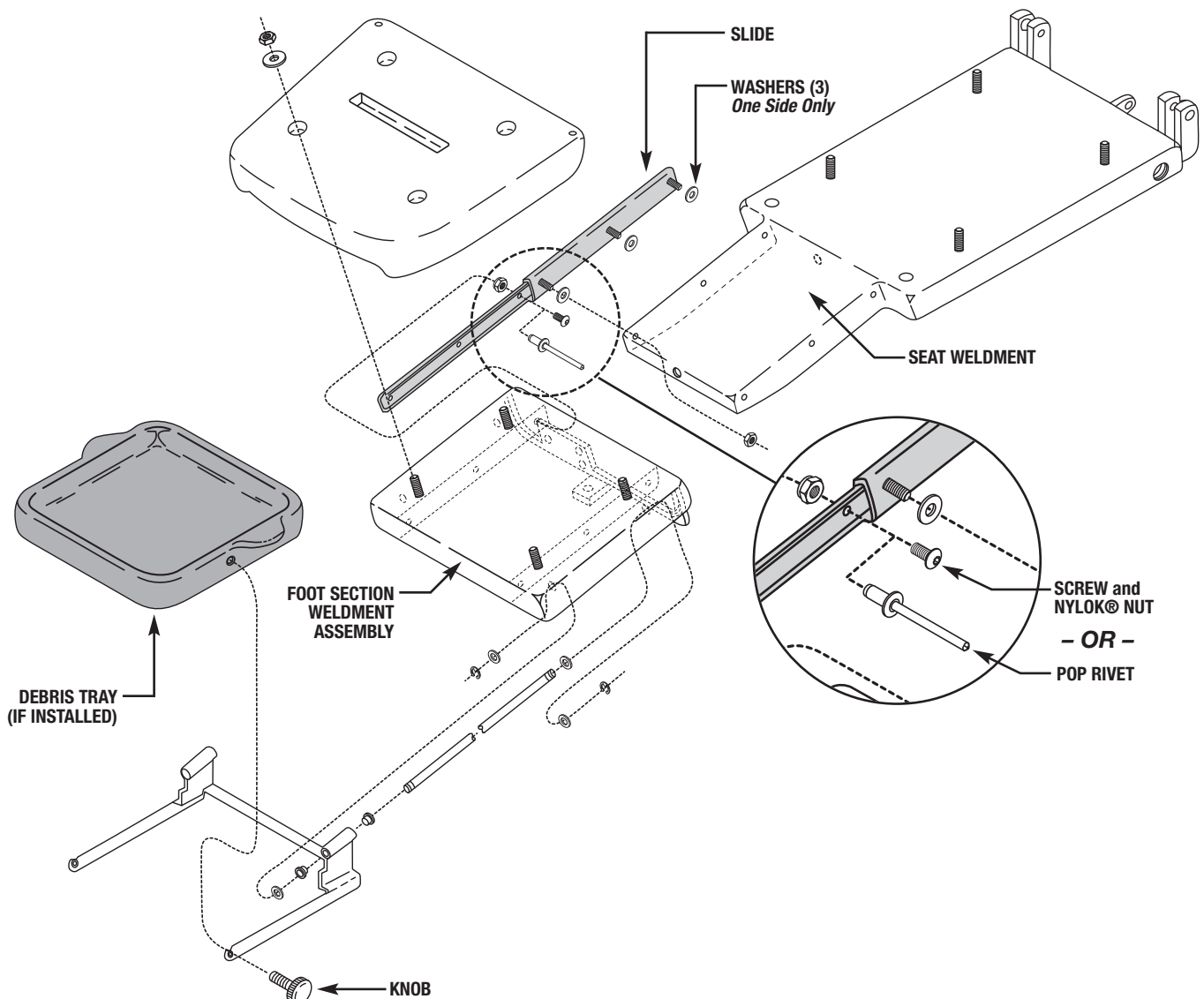
6. Remove brake lever. Retain lever, shoulder bolt and washer for reuse later. Remove brake release handle. Retain handle, shoulder bolt and washer for reuse later (*see Figure 2*).
7. Using a right-angled drill and a 1/8” drill bit. Drill out the pop-rivets attaching the slides to the foot section weldment (*see Figure 2*).

NOTE: The (2) rear pop rivets must be accessed thru the 9/16” access holes in the seat weldment and slide (*see Figure 2*).

HINT: This slide kit contains both pop rivets and screws with Nylok® nuts to attach the slides to the foot section weldment – using the screws will make the disassembly process easier in the future.

8. Remove the foot section weldment assembly by extending it past the ends of the slides and tipping it forward to slip over the end of the seat section. Set the foot section weldment assembly aside for reuse later.
9. Remove the (6) nuts and lock washers from slide studs securing the two slides to the seat weldment and discard.

Figure 1



INSTALLATION

10. Install slides onto the seat weldment assembly using (6) Nylok® nuts included onto threaded studs.
- NOTE:** There are (3) flat washers (included) that should be installed onto the welded studs of one slide to take up slack. These washers should be installed on one slide only (*see Figure 1*).
11. Reinstall the foot section weldment assembly by slipping it over the end of the seat weldment.
12. Using (6) button head screws and (6) Nylok® nuts (included) or (6) pop rivets (included) attach the slides to the foot section weldment.
- NOTE:** The (2) rear holes in the slides can only be reached through the 9/16" access hole in the seat weldment and the slide (*see Figure 2*).
- HINT:** This slide kit contains both pop rivets and screws with Nylok® nuts to attach the slides to the foot section

- weldment – using the screws will make the disassembly process easier in the future.
13. Use Threadlocker 242 (RPI Part #RPA032 - included) on original shoulder bolt, reinstall the brake lever ensuring that the nylon washer is located between the lever and the foot section weldment (*see Figure 2*).
14. Use Threadlocker 242 (RPI Part #RPA032 - included) on original shoulder bolt, reinstall the brake release handle ensuring that the nylon washer is located between the handle and the foot section weldment.
15. Reinstall the retained brake lever spring into the holder.
- CAUTION:** Use care when reinstalling the brake lever spring as it is compressed during the installation and may pop out of the holder with some force.
16. Hold down the brake release lever and reinstall the brake shaft onto the foot section weldment. Use the retained hardware to reposition the brake shaft and tighten in place.

