



replacement parts industries, inc.

CALL (800) 221-9723 or (818) 882-8611 • FAX (818) 882-7028
EMAIL techsupport@rpi.com • WEBSITE www.rpiparts.com

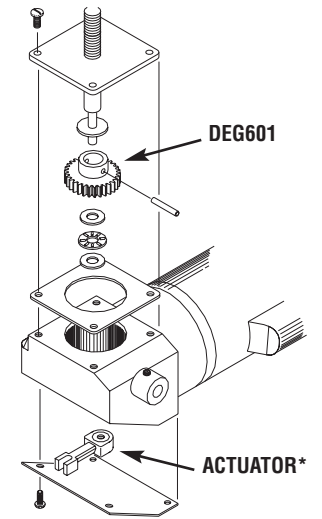
DEG601 SEAT MOTOR GEAR INSTALLATION INSTRUCTIONS

1. Raise chair and seat motor to highest position. Disconnect AC power to chair.
2. Remove screws holding bellows top cover to bellows hangers and lower cover. Remove plastic motor skirt cover.
3. Loosen set screws securing pivot pins in seat motor screw tube. Remove pivot pins while supporting the toe of the chair.

CAUTION

Support the toe of the chair when removing pivot pins. Removing pivot pins will cause chair to drop.

4. Tilt chair top and place a block of wood between chair mount casting and pivot casting.
5. Disconnect seat motor from chair junction box.
6. Loosen set screws holding gear motor mounting pins. Remove mounting pins while holding motor. Remove motor from cradle assembly.
7. Remove screws from limit switch cover and remove cover.
8. Remove screws from gear housing cover. Pull motor shaft slightly, separating cover from housing.
9. Unscrew motor screw shaft and gear assembly from actuator. Pull motor gear shaft assembly out of housing.



Motor Screw Shaft and Gear Assembly Alignment

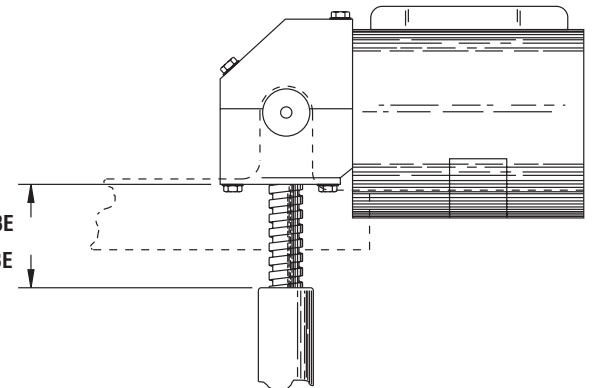
*NOTE REGARDING ACTUATOR

To determine which actuator you need, measure thread size and direction of thread. For actuators to fit the DEN-TAL-EZ seat motor, please see the RPI catalog.

10. Remove roll pin from gear shaft assembly. Pull gear off shaft.
11. Place spacer on shaft before installing replacement gear (RPI Part #DEG601). Install replacement gear on shaft. Line up pin holes and install roll pin.

12. Place spacer on top of gear. Install roller bearing then spacer. Install complete screw shaft and gear assembly into the gear housing.
13. Screw fine-threaded end of shaft into actuator. Stop when actuator is between limit switches.
14. Push screw shaft into gear housing, twisting shaft to make gear mesh with worm drive gear. Installed properly, gear housing cover will be firmly seated against gear housing.
15. Replace screws in gear housing cover and limit switch cover.
16. Connect motor to chair junction box. Connect AC power to chair.
17. Press bottom of Seat Control switch so screw tube will turn counterclockwise. Run motor to its full "DOWN" position. Disconnect AC power to chair.
18. If motor is equipped with nylon screw tube, allow 1-7/8" minimum clearance between the edge of gear housing cover and screw tube. For metal screw tubes, minimum clearance should be 1-1/4". Adjust screw tube on shaft to proper specification before installing. SEE DIAGRAM BELOW.

Minimum Clearance
1-7/8" FOR NYLON SCREW TUBE
1-1/4" FOR METAL SCREW TUBE



19. Mount seat motor in cradle assembly with pins.
20. Remove block of wood and place the screw tube in pivot yoke with pivot pins and set screws.
21. Raise bellows cover and attach it to bellows hangers with screws. Replace motor skirt.
22. Connect chair to AC power and check for proper operation.