



replacement parts industries, inc.

CALL 800-221-9723 or 818-882-8611 • FAX 818-882-7028
E-MAIL: techsupport@rpiparts.com • WEBSITE: www.rpiparts.com

RPI PART #CMS208 PRESSURE SWITCH INSTALLATION INSTRUCTIONS

WARNING:

Before replacing the Pressure Switch (RPI Part #CMS208),
remove power from the compressor and bleed the pressure from the main tank to 0 PSI.

1. Use a Phillips head screwdriver to loosen the pressure switch cover screw and remove the cover. Tag all wires before disconnecting them from the pressure switch, and take a photo (or make a sketch) of the wiring configuration to assist with reinstalling the wiring in Step #5. Then disconnect the wires from the pressure switch.

- If an unloader valve is connected then proceed with Steps #2-6. See Figure 1.
- If no unloader valve is connected to the pressure switch, proceed to Steps #5-6. See Figure 2.

2. Use a torx screwdriver to loosen the screw securing the unloader to the pressure switch, and remove the unloader valve.

3. Remove the tubing connected between the Cooler and Membrane Dryer. Discard the unloader valve and the associated tubing.

4. Replace the removed tubing between the Cooler and Membrane Dryer with the black Tubing (RPI Part #RXT017) supplied with this Kit.

5. Use a 15/16-inch open end wrench to loosen the pressure switch by turning the mounting nut counter-clockwise. Remove and discard the old pressure switch and cover.

Install the replacement pressure switch and tighten by turning the mounting nut clockwise using a 15/16-inch open end wrench. Refer to Step #1 to reconnect the wiring to the pressure switch.

6. Turn on the compressor and check the pressure switch operation. Adjust the switch by performing the Pressure Adjustment procedures in Figure 3.

Figure 1 - Original configuration with an unloader valve and extra tubes (Pressure Switch with an unloader valve)

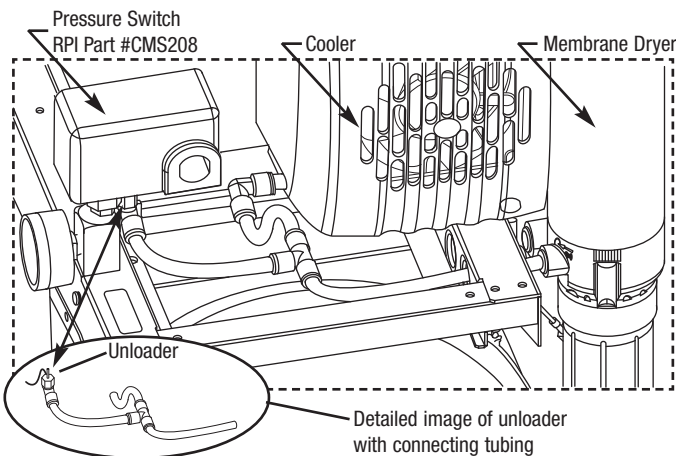


Figure 2 - New configuration without an unloader valve (Pressure Switch without an unloader valve)

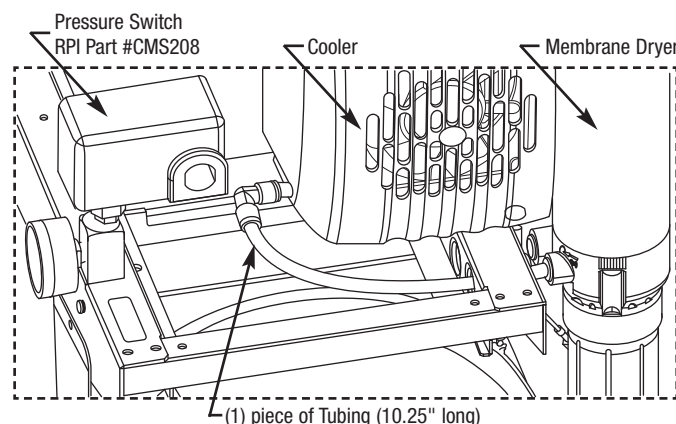
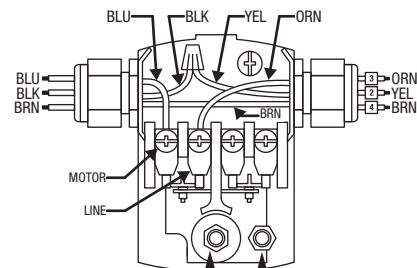


Figure 3 - Pressure Adjustment Procedures



Range Spring Nut
To adjust for Cut-In point, see Adjustment Sequence #1 below.

Differential Spring Nut
To adjust for Cut-Out point, see Adjustment Sequence #2 below.

Adjustment Sequence

- 1) **Cut-In.** Turn Range Spring Nut for higher cut-in pressure. Turn counter-clockwise for lower cut-in. (Normal Adjustment turns compressor ON at 70-80 PSI.)
- 2) **Cut-Out.** Turn Differential Spring Nut clockwise for higher cut-out pressure. Turn counter-clockwise for lower cut-out. (Normal Adjustment turns compressor OFF at 100 PSI.)