



replacement parts industries, inc.

CALL 800-221-9723 or 818-882-8611 • FAX 818-882-7028
E-MAIL: techsupport@rpiparts.com • WEBSITE: www.rpiparts.com

BEH030 & BEH031 WIRE HARNESS INSTALLATION INSTRUCTIONS

- 1) Disconnect power to the light. Open the transformer housing and unplug the wire harness.
- 2) In order to manipulate the light into the positions necessary to pull the old wire harness out, release enough tension on the spring to keep it from floating. Use the adjustment tool (RPI Part #BET029) on both ends of the spring to release the tension counter-clockwise. (See Figure 1).
- 3) Now that the spring tension has been reduced to it's minimum, angle the Balance Arm 90° to the Swivel Arm.
- 4) Open the rear cover of the Head Assembly and unplug the old wire harness.
- 5) Cut the plugs off of the old harness and strip the ends of the wire about one inch. (See Figure 1).
- 6) Take the new wire harness with the pins attached (where the plug housing attaches) and place the precut heat shrink over the pins onto the wire. (See Figure 2).
- 7) Take the old wire harness and wrap the stripped wire leads around the pins of the new wire harness. (See Figure 2).
- 8) Bring the heat shrink over the section of the pins and wrapped wire leads and apply heat to shrink it. When all three wire leads are securely attached to the new wire harness and held in place by the heat shrink tubing, tug on the cable to make sure it will not fall apart. (See Figure 2).
- 9) With the Balance Arm at 90° to the Swivel Arm, look through the knuckle at the end of the Balance Arm, reach in with a pair of needle nose pliers and pull out a section of the harness large enough to grab with your fingers. (See Figure 1).
- 10) Pull the entire Balance Arm section of wire harness (with new harness attached) through the knuckle. If the harness gets caught, guide it back to disengage it, then attempt to pull it out again. Repeat if necessary.
- 11) Once the section of harness is out of the Balance Arm, go to the transformer housing and begin pulling the old wire harness out of the Swivel Arm.

- 12) Now that the old wire harness is completely removed from the light and the new harness is pulled into place, remove the heat shrink and unwrap the wire leads. Be careful not to damage the pins.
- 13) It is important to install the correct wire leads into the correct corresponding pin locations in the socket housing. (See Figure 3).
- 14) With the wire harness complete with plug attachments on both ends, attach the wire harness to the head assembly (power switch).
- 15) Plug in the wire harness at the transformer.
- 16) Test the light to make sure everything works properly.
- 17) Reassemble the transformer housing and head assembly rear cover.
- 18) Reset spring tension with adjustment tool (RPI Part #BET029) clockwise to tighten. (See Figure 1).

FIGURE 1

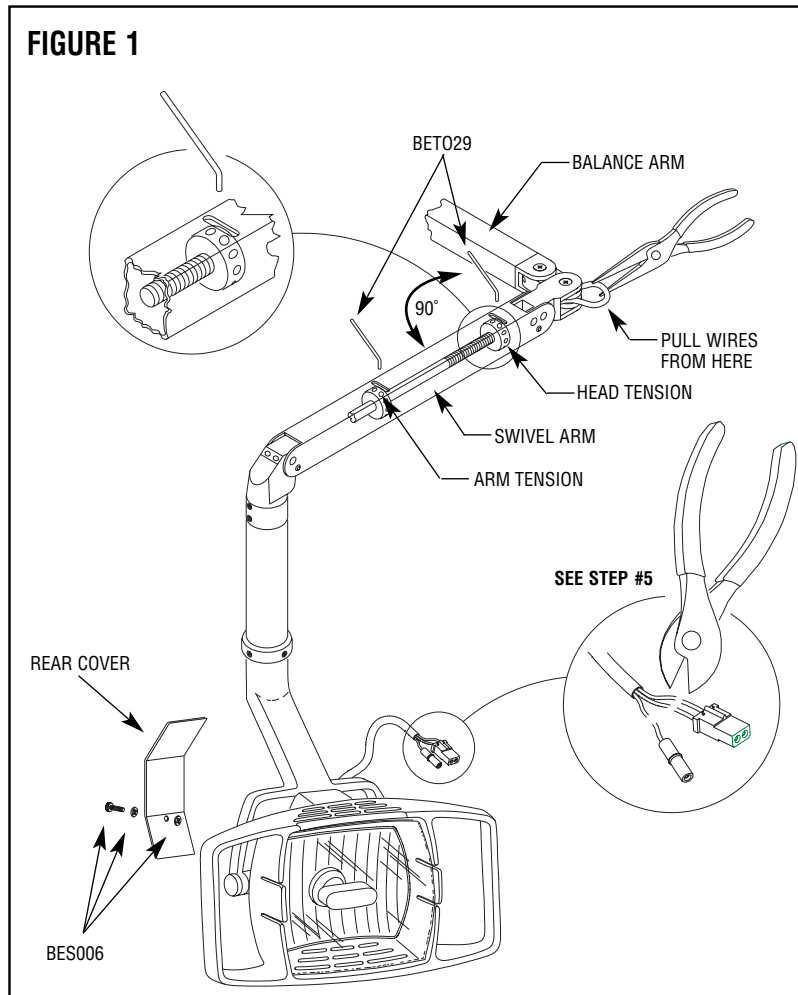


FIGURE 2

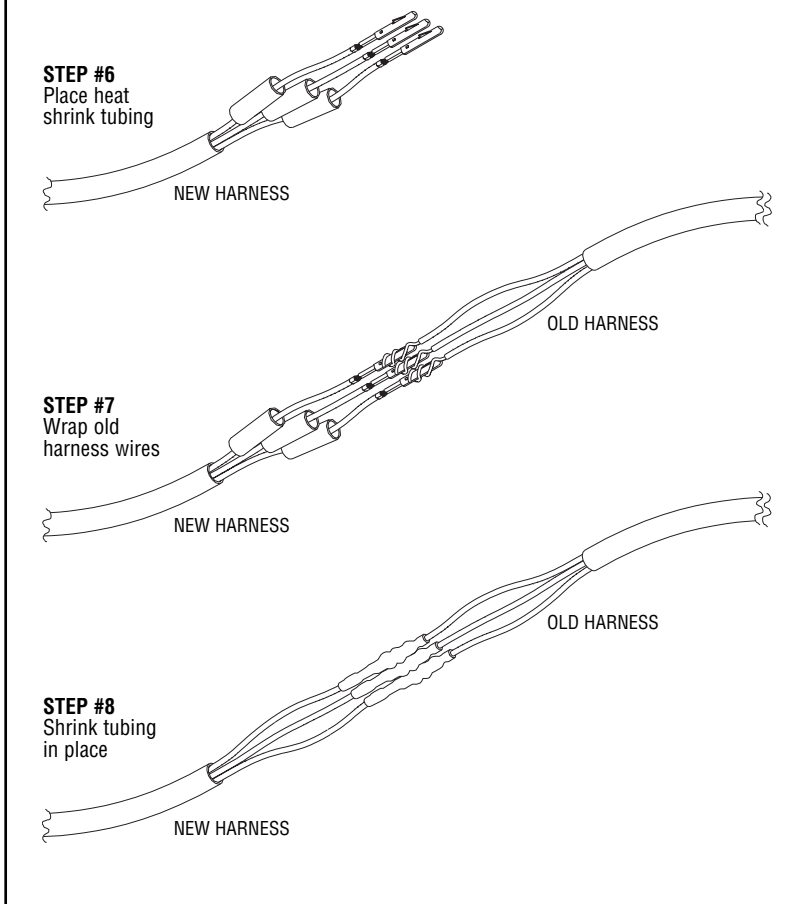


FIGURE 3

