



COALESCING FILTER ASSEMBLY (5 OZ.)

EXPLODED VIEW SHOWN



COALESCING FILTER ASSEMBLY (5 oz.)

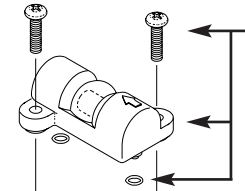
RPI Part #CMA021

Wilkerson Part #M16-03-FMO

• All parts also sold separately

• Includes: Differential Pressure Indicator (RPI Part #CMI015), Coalescing Filter Element (RPI Part #CMK024), Auto Float Drain (RPI Part #CMF016), O-ring and nut

Models: See chart below for manufacturer and Part #'s



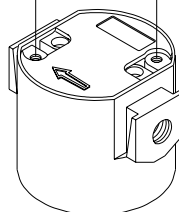
DIFFERENTIAL PRESSURE INDICATOR

RPI Part #CMI015

Wilkerson Part #DP2-01-000

• Replacement to fit Coalescing Filter Element (RPI Part #CMK024)
• Includes screws and O-rings

Models: See chart below for manufacturer and Part #'s



RPI OFFERS A SELECTION OF COALESCING FILTER ELEMENTS WITH O-RING

COALESCING FILTER ELEMENT

RPI Part #CMK024

Wilkerson Part #MTP-95-548

• Type C; 0.01 micron; Red material; Includes filter element and O-ring
• Replacement to fit Coalescing Filter Assembly (RPI Part #CMA021)

Models: See chart below for manufacturer and Part #'s



COALESCING FILTER ELEMENT

RPI Part #CMK005

Wilkerson Part #MSP-95-988

• Type B; 0.5 micron; White material; Includes filter element and O-ring
• Replacement to fit Coalescing Filter Assembly (RPI Part #CMA021)

Models: See chart below for manufacturer and Part #'s



COALESCING FILTER ELEMENT

RPI Part #CMK026

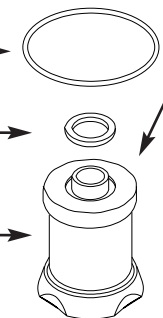
Generic Brand

• Type C; 0.01 micron; Includes filter element and O-ring
• Replacement to fit Coalescing Filter Assembly (RPI Part #CMA021)

Models: See chart below for manufacturer and Part #'s



Coalescing Filter Element
Includes O-ring



AUTO FLOAT DRAIN

RPI Part #CMF016

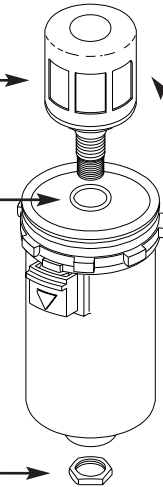
Wilkerson Part #GRP-95-981

• Replacement to fit Coalescing Filter Assembly (RPI Part #CMA021)
• Includes O-ring and nut

Models: See chart below for manufacturer and Part #'s



Auto Float Drain
Includes O-ring and Nut



RPI PART #	DESCRIPTION	APOLLO	DENTALEZ®	JUN-AIR	MATRIX (AIMAX™)
CMA021	COALESCING FILTER ASSEMBLY (WILKERSON Part #M16-03-FMO) Assembly includes Coalescing Filter Element (RPI Part #CMK024)	ACA70305			77005010
CMK024	COALESCING FILTER ELEMENT (WILKERSON Part #MTP-95-548) Replacement filter (Type C, 0.01 micron: Red material) and O-ring to fit Coalescing Filter Assembly (RPI Part #CMA021)	ACA86050 (Type C, Wilkerson Filter only)	648-00209 (Type C, Wilkerson Filter only)	648-00209 (Type C, Wilkerson Filter only)	77005005 (Type C, Wilkerson Filter only)
CMK005	COALESCING FILTER ELEMENT (WILKERSON Part #MSP-95-988) Replacement filter (Type B, 0.5 micron: White material) and O-ring to fit Coalescing Filter Assembly (RPI Part #CMA021)	ACA86050 (Type B, Wilkerson Filter only)	648-00209 (Type B, Wilkerson Filter only)	648-00209 (Type B, Wilkerson Filter only)	77005005 (Type B, Wilkerson Filter only)
CMK026	COALESCING FILTER ELEMENT (GENERIC BRAND) Replacement filter (Type C, 0.01 micron) and O-ring to fit Coalescing Filter Assembly (RPI Part #CMA021)	ACA86050 (Type C, Generic Filter only)	648-00209 (Type C, Generic Filter only)	648-00209 (Type C, Generic Filter only)	77005005 (Type C, Generic Filter only)
CMI015	DIFFERENTIAL PRESSURE INDICATOR (WILKERSON Part #DP2-01-000) Replacement Differential Pressure Indicator to fit Coalescing Filter Element (RPI Part #CMK024)	AAP85210			
CMF016	AUTO FLOAT DRAIN (WILKERSON Part #GRP-95-981) Replacement Auto Float Drain to fit Coalescing Filter Element (RPI Part #CMK024)	ACA85210			



COALESCING FILTER ASSEMBLY (10 OZ.)

EXPLODED VIEW SHOWN



COALESCING FILTER ASSEMBLY (10 oz.)

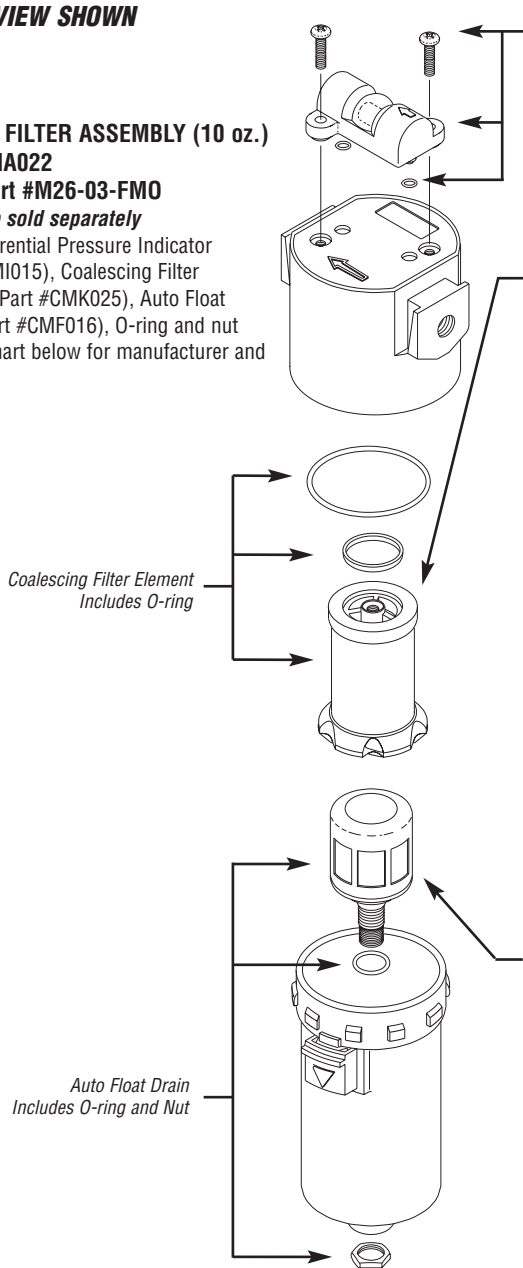
RPI Part #CMA022

Wilkerson Part #M26-03-FMO

• All parts also sold separately

- Includes Differential Pressure Indicator (RPI Part #CMI015), Coalescing Filter Element (RPI Part #CMK025), Auto Float Drain (RPI Part #CMF016), O-ring and nut

Models: See chart below for manufacturer and Part #'s



DIFFERENTIAL PRESSURE INDICATOR

RPI Part #CMI015

Wilkerson Part #DP2-01-000

- Replacement to fit Coalescing Filter Element (RPI Part #CMK025)
- Includes screws and O-rings

Models: See chart below for manufacturer and Part #'s



RPI OFFERS A SELECTION OF COALESCING FILTER ELEMENTS WITH O-RING

COALESCING FILTER ELEMENT

RPI Part #CMK025

Wilkerson Part #MTP-95-549

- Type C; 0.01 micron; Red material; Includes filter element and O-ring
- Replacement to fit Coalescing Filter Assembly (RPI Part #CMA022)

Models: See chart below for manufacturer and Part #'s



COALESCING FILTER ELEMENT

RPI Part #CMK006

Wilkerson Part #MSP-95-989

- Type B; 0.5 micron; White material; Includes filter element and O-ring
- Replacement to fit Coalescing Filter Assembly (RPI Part #CMA022)

Models: See chart below for manufacturer and Part #'s



COALESCING FILTER ELEMENT

RPI Part #CMK027

Generic Brand

- Type C; 0.01 micron; Includes filter element and O-ring
- Replacement to fit Coalescing Filter Assembly (RPI Part #CMA022)

Models: See chart below for manufacturer and Part #'s



AUTO FLOAT DRAIN

RPI Part #CMF016

Wilkerson Part #GRP-95-981

- Replacement to fit Coalescing Filter Assembly (RPI Part #CMA022)
- Includes O-ring and nut

Models: See chart below for manufacturer and Part #'s



RPI PART #	DESCRIPTION	APOLLO	DENTALEZ®	JUN-AIR	TECH WEST/TURBINE
CMA022	COALESCING FILTER ASSEMBLY (WILKERSON Part #M26-03-FMO) Assembly includes Coalescing Filter Element (RPI Part #CMK025)	ACA85215	645-45010	JA40815000	CFA-375
CMK025	COALESCING FILTER ELEMENT (WILKERSON Part #MTP-95-549) Replacement filter (Type C, 0.01 micron; Red material) and O-ring to fit Coalescing Filter Assembly (RPI Part #CMA022)	ACA86055 (Type C, Wilkerson Filter only)	645-45010 (Type C, Wilkerson Filter only)	JA40815000 (Type C, Wilkerson Filter only)	CFE-375 (Type C, Wilkerson Filter only)
CMK006	COALESCING FILTER ELEMENT (WILKERSON Part #MSP-95-989) Replacement filter (Type B, 0.5 micron; White material) and O-ring to fit Coalescing Filter Assembly (RPI Part #CMA022)	ACA86055 (Type B, Wilkerson Filter only)	645-45010 (Type B, Wilkerson Filter only)	JA40815000 (Type B, Wilkerson Filter only)	CFE-375 (Type B, Wilkerson Filter only)
CMK027	COALESCING FILTER ELEMENT (GENERIC BRAND) Replacement filter (Type C, 0.01 micron) and O-ring to fit Coalescing Filter Assembly (RPI Part #CMA022)	ACA86055 (Type C, Generic Filter only)	645-45010 (Type C, Generic Filter only)	JA40815000 (Type C, Generic Filter only)	CFE-375 (Type C, Generic Filter only)
CMI015	DIFFERENTIAL PRESSURE INDICATOR (WILKERSON Part #DP2-01-000) Replacement Differential Pressure Indicator to fit Coalescing Filter Assembly (RPI Part #CMA022)	AAP85210			CI-100
CMF016	AUTO FLOAT DRAIN (WILKERSON Part #GRP-95-981) Replacement Auto Float Drain to fit Coalescing Filter Assembly (RPI Part #CMA022)	ACA85210	645-45010 (Wilkerson Auto Float Drain only)		



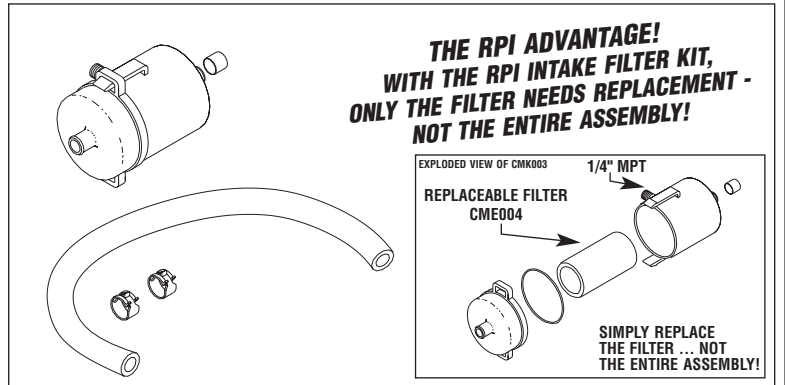
INTAKE FILTERS (FRESH AIR)



FRESH AIR INTAKE FILTER KIT RPI Part #CMK003 OEM Part #PFM50955

- Includes filter housing, (2) Uniclamp (RPI Part #RPC442), PVC Tubing (RPI Part #RPT441), Cap (RPI Part #RPC443), and Filter (RPI Part #CME004)

Model: All Apollo

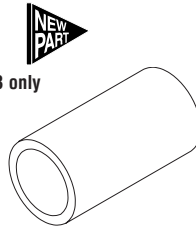


REPLACEMENT FILTER ELEMENT RPI Part #CME004

Apollo Part #PFM50955/Fits RPI Part #CMK003 only

- Replacement for filter element (RPI Part #CMK003) only
- Includes O-ring;
- 1.63" OD x 2.96" long

Model: All Apollo



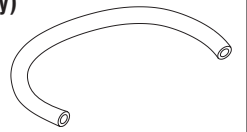
PVC TUBING - CLEAR (sold by the foot)

RPI Part #RPT441

Apollo Part #PFM50955 (PVC tubing only)

- .50" ID x .728" OD
- Replacement for tubing included in Fresh Air Intake Filter Kit (RPI Part #CMK003)

Model: All Apollo



CAP

RPI Part #RPC443

Apollo Part #PFM50955 (Cap only)

- 6 per package; 1/2" ID; Black textured
- Replacement for cap included in Fresh Air Intake Filter Kit (RPI Part #CMK003)

Model: All Apollo



UNICLAMP

RPI Part #RPC442

Apollo Part #PFM50955 (Uniclamp only)

- 6 per package; Fits 3/4" OD tubing
- Replacement for uniclamp included in Fresh Air Intake Filter Kit (RPI Part #CMK003)

Model: All Apollo



INTAKE FILTERS (AIR)



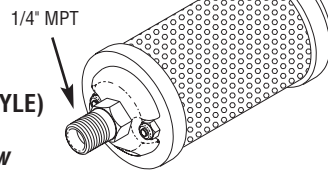
AIR INTAKE FILTER (METAL STYLE)

RPI Part #CMF002

OEM Part #'s - See Chart Below

- Auto Muffler MO2

Models: See chart below for manufacturer and Part #'s



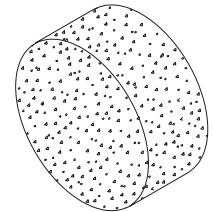
FOAM ELEMENT

RPI Part #CMF011

OEM Part #'s - See Chart Below

- Size: 4-1/4" diameter x 2" long

Models: See chart below for manufacturer and Part #'s



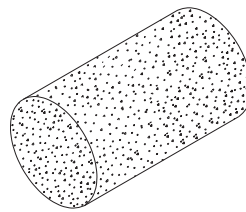
FOAM ELEMENT

RPI Part #CMF014

OEM Part #'s - See Chart Below

- Size: 2-1/2" dia. x 4-1/2" long

Models: See chart below for manufacturer and Part #'s



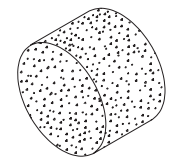
FOAM ELEMENT

RPI Part #CMF013

OEM Part #'s - See Chart Below

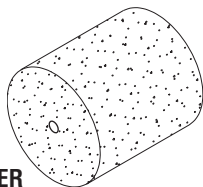
- Size: 2" diameter x 2" long

Models: See chart below for manufacturer and Part #'s



RPI PART #	DESCRIPTION	AIR TECHNIQUES	APOLLO	DCI	MATRIX (AIRMAX™)	MDT McKESSON	TECH WEST/TURBINE
CMF002	AIR INTAKE FILTER Auto Muffler MO2; Metal Housing	80050	PFM50955 (Auto Muffler MO2)				
CMF011	FOAM ELEMENT Size: 4-1/4" diameter x 2" long	60043-1					
CMF014	FOAM ELEMENT Size: 2-1/2" diameter x 4-1/2" long			2423		3-08-0632-10	
CMF013	FOAM ELEMENT Size: 2" diameter x 2" long				77007079		AAF-100

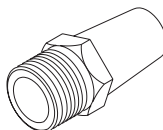
FOAM INSERT/PURGE FILTERS



FOAM INSERT/PURGE FILTER
RPI Part #CMF012

OEM Part #'s - See Chart Below

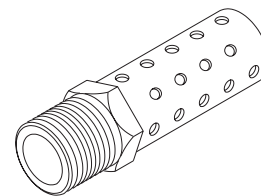
- 5" diameter with center through hole x 5-1/2" long
- See chart below



PURGE MUFFLER
RPI Part #CMM017

OEM Part #'s - See Chart Below

- 1-1/4" long; 3/8" MPT with 9/16" hex
- See chart below



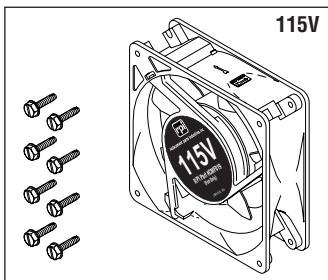
PURGE MUFFLER
RPI Part #CMM023

OEM Part #'s - See Chart Below

- 2-3/8" long; 1/2" MPT with 7/8" hex
- See chart below

RPI PART #	DESCRIPTION	AIR TECHNIQUES	TECH WEST/TURBINE
CMF012	FOAM INSERT/PURGE FILTER Size: 5-1/2" long x 5" diameter with center through hole		FA-100
CMM017	PURGE MUFFLER Size: 1-1/4" long; 3/8" MPT with 9/16" hex	80330	AS-250
CMM023	PURGE MUFFLER Size: 2-3/8" long; 1/2" MPT with 7/8" hex		PM-500

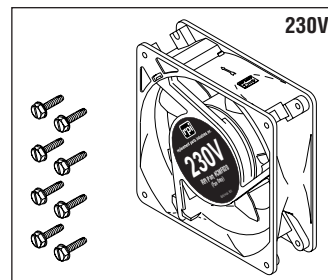
COOLING FANS



COOLING FAN (115V)
RPI Part #CMF019

OEM Part #'s - See Chart Below

- 4-11/16" x 4-11/16"; Includes mounting hardware
- See chart below



COOLING FAN (230V)
RPI Part #CMF020

OEM Part #'s - See Chart Below

- 4-11/16" x 4-11/16"; Includes mounting hardware
- See chart below

RPI PART #	DESCRIPTION	AIR TECHNIQUES	APOLLO	DCI	DENTALEZ®	JUN-AIR	MDT MCKESSON	TECH WEST/TURBINE
CMF019	COOLING FAN (115V) Size: 4-11/16" x 4-11/16"	41060	SEA95535	2696	5451400	JA5445100 Cooling Fan only	3-08-0578-10	CF-115 Cooling Fan only
CMF020	COOLING FAN (230V) Size: 4-11/16" x 4-11/16"	80516	SEA95540	2422	5451500	JA5445000 Cooling Fan only	3-08-0563-10	CF-230 Cooling Fan only

COMPRESSOR OIL

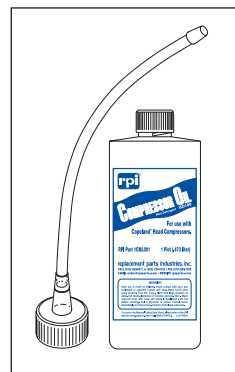
SAVE MONEY - BUY IT BY THE CASE
RPI Part #CML045
COMPRESSOR OIL
By the case - (12) 16 oz. bottles
with dispensing tubes and yorker caps



COMPRESSOR OIL - (1) 16 oz. Bottle
RPI Part #CML001

OEM Part #'s - See Chart Below

- Includes dispensing tube
- See chart below



RPI PART #	DESCRIPTION	AIR TECHNIQUES	APOLLO	DCI	DENTALEZ®	MATRIX (AIRMAX™)	MDT MCKESSON	TECH WEST/TURBINE
CML001	COMPRESSOR OIL - (1) 16 oz. bottle Includes dispensing tube	60051 (1) 16 oz. bottle	ACA85921	2485 (1) 16 oz. bottle	64651001 (1) 16 oz. bottle	77000220 (1) 16 oz. bottle	3-08-0084-30 (1) 16 oz. bottle	CO-100 (1) 16 oz. bottle
CML045	COMPRESSOR OIL (by the case) Case includes (12) 16 oz. bottles Includes dispensing tube	60051 (12) 16 oz. bottles	ACA85922	2647 (12) 16 oz. bottles	64651001 (12) 16 oz. bottles	77000220 (12) 16 oz. bottles	3-08-0084-30 (12) 16 oz. bottles	CO-100 (12) 16 oz. bottles