



EXTENSION TEST CABLE RPI Part #SCT026 Installation & Usage Instructions

THE RPI ADVANTAGE

By attaching the Extension Test Cable to the cover and main PC board as instructed below, you will be able to extend the distance between the autoclave and the cover thus allowing you to place the cover in a horizontal (not vertical) position for easier viewing of the LCD display and easier access to the keypad.

INSTRUCTIONS

1. Disconnect the power to the autoclave. Remove the cover. Disconnect the two cables from the main PC board - one cable from the LCD display board and the other from the keypad (**see Figure 1**). Leave the cover in the horizontal position.
2. Connect the Extension Test Cable mating connector to the LCD display board cable.
3. If the OEM keypad is installed, connect the Extension Test Cable mating connector to the keypad cable connector (**see Figure 2**).
If the RPI keypad is installed, connect the Extension Test Cable mating connector to the RPI keypad cable connector - making sure that both connectors have the "This Side Up" label facing in the upward direction (**see Figure 3**). (*Note: The RPI keypad cable connector does not have an alignment key, so it is very important to connect as per instructions and Figure 3.*)
4. Connect the Extension Test Cable mating connectors to the main PC board - making sure that the Extension Test Cable connector has the "This Side Up" label facing in the upward direction (**see Figure 1**). (**Caution: If the Extension Test Cable is connected incorrectly, severe damage may occur to the autoclave.**)

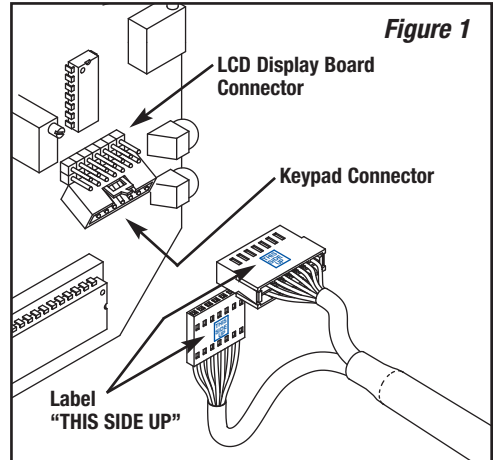


Figure 1

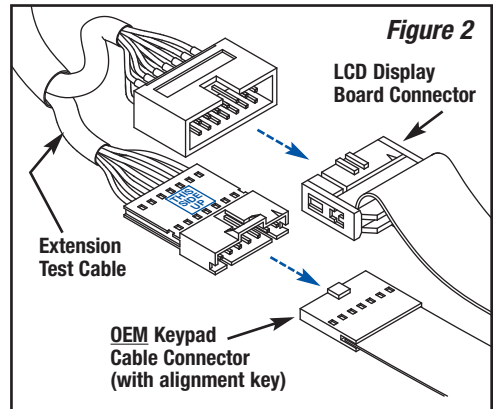


Figure 2

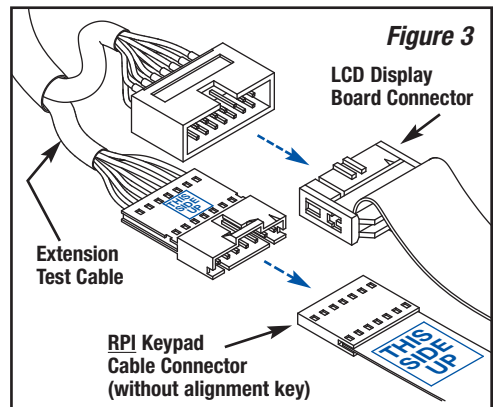
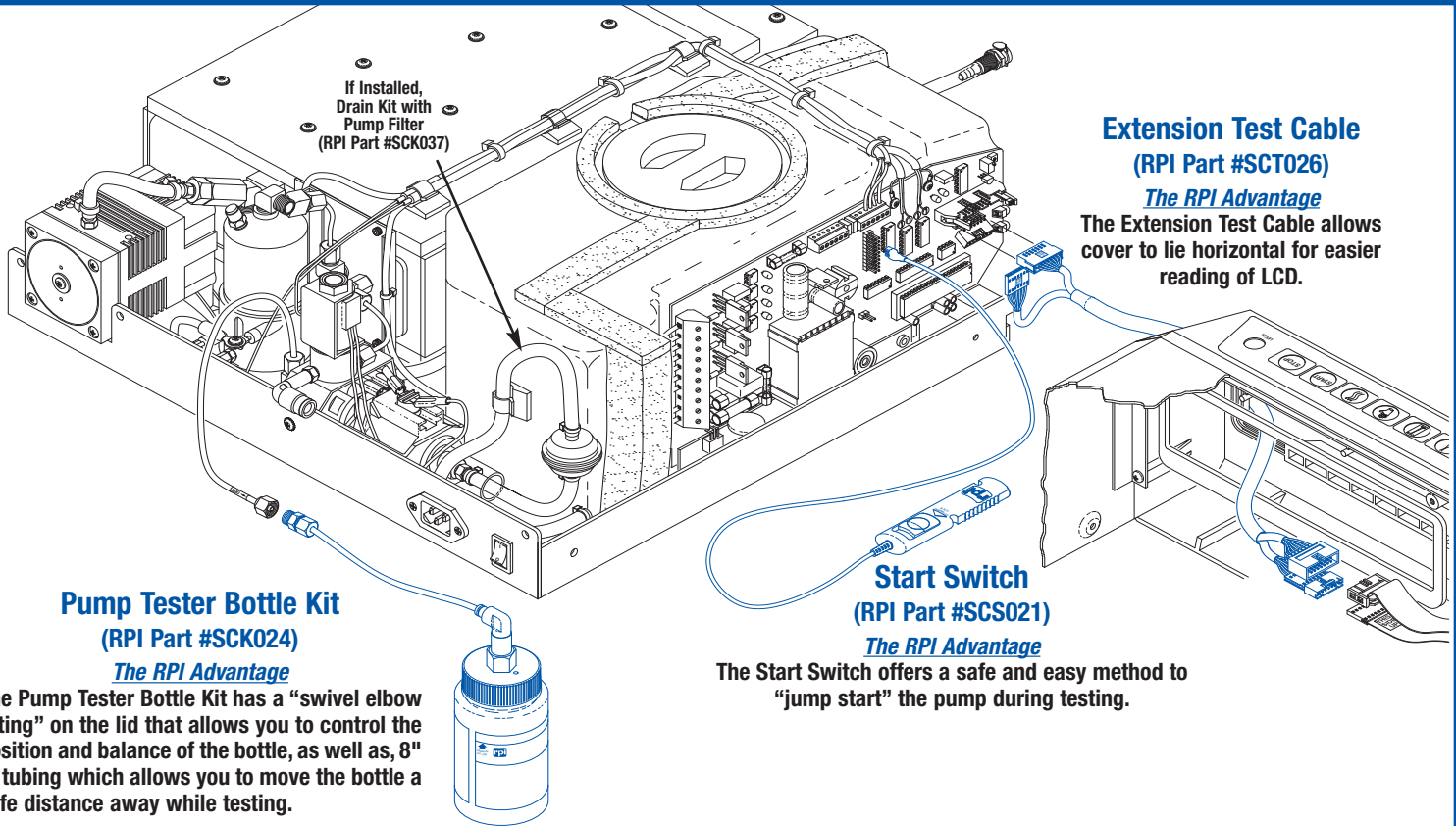


Figure 3



If Installed,
Drain Kit with
Pump Filter
(RPI Part #SCK037)

**Extension Test Cable
(RPI Part #SCT026)**

The RPI Advantage

The Extension Test Cable allows cover to lie horizontal for easier reading of LCD.

**Pump Tester Bottle Kit
(RPI Part #SCK024)**

The RPI Advantage

The Pump Tester Bottle Kit has a "swivel elbow fitting" on the lid that allows you to control the position and balance of the bottle, as well as, 8" of tubing which allows you to move the bottle a safe distance away while testing.



**Start Switch
(RPI Part #SCS021)**

The RPI Advantage

The Start Switch offers a safe and easy method to "jump start" the pump during testing.



Here's Another RPI Advantage – The RPI Field Service Smart Kit® (RPI Part #SCK028). It's the only one of its kind and it was designed by RPI exclusively for our customers for servicing and repairing SciCan STATIM® 2000 & 5000 Cassette Autoclaves. It includes RPI "one-of-a-kind" tools like the easy to use Probe Bracket Alignment Tool, a 25" long Extension Test Cable, Start Switch, Pump Tester Bottle with an extended swivel elbow for easy positioning, and many other tools including a Water Quality Tester with the Calibration Solution. Plus, this Kit includes RPI's *A Guide to Maintaining the SciCan STATIM® Cassette Autoclave*, an essential booklet offering troubleshooting and service tips, error code descriptions, detailed exploded views and more! Also, it all comes in a sturdy black carrying case with handle.