



replacement parts industries, inc.

CALL 800-221-9723 or 818-882-8611 • FAX 818-882-7028  
E-MAIL: techsupport@rpiparts.com • WEBSITE: www.rpiparts.com

## START SWITCH RPI Part #SCS021 Installation & Usage Instructions

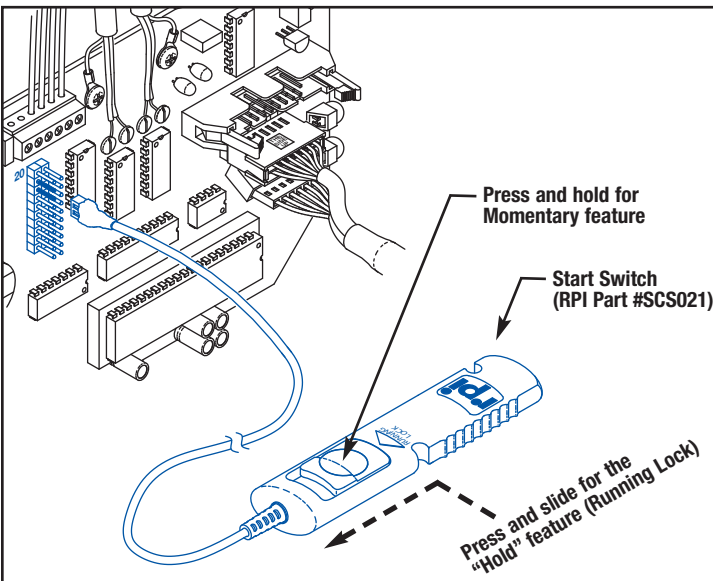
### THE RPI ADVANTAGE

When testing the pump or decontaminating the steam generator/boiler, it is suggested by the OEM to activate the pump by shorting Pins #18 and #16 together. However, the RPI Start Switch offers an easier and safer method. By connecting the RPI Start Switch to the main PC board connector (P1), you control the activation of the pump via a hand-held switch. In addition, the RPI Start Switch has a “hold feature” (i.e. running lock) for longer test periods.

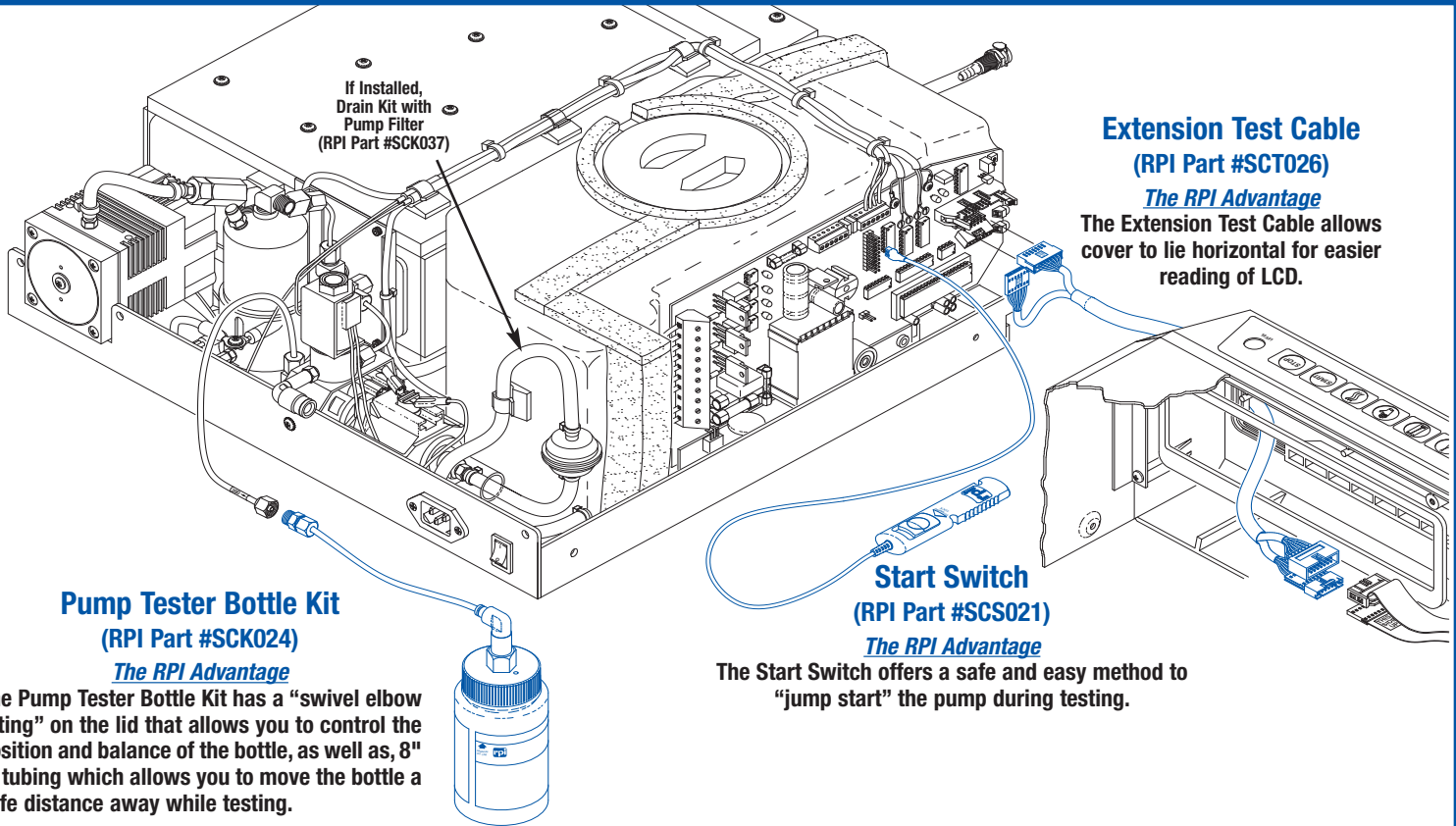
### INSTRUCTIONS

**STEP #1** - Connect the RPI Start Switch connector to Pins #18 and #16 on the “20 Pin Connector” (P1) located on the main PC board. (**See illustration below and note the following:** To guide the Start Switch connector to Pins #18 and #16, start at the pin labeled “20”, count down one pin, which is Pin #18, then count down one more pin, which is Pin #16. Gently guide the Start Switch connector to both Pins #18 and #16, leaving all other pins exposed.) (**Caution:** *If the Start Switch is connected to any other pins except #18 and #16, severe damage may occur to the autoclave.*)

**STEP #2** - Once the Start Switch is connected, the next step is to connect the Pump Tester Bottle (RPI Part #SCK024). When testing the pump, press and hold the “momentary” button for approximately 25 seconds. When decontaminating the steam generator/boiler, (see **Caution note below**), press and slide the “momentary” button into the “hold” (i.e. running lock) position for approximately 3 minutes. (**Caution:** *When decontaminating the steam generator/boiler, the reservoir must be full so that the pump does not run dry during the process thus causing severe damage to the autoclave.*)



**TIP** - To guide the Start Switch Connector to Pins #18 and #16, start at the pin labeled “20”, count down one pin, which is Pin #18, then count down one more pin, which is Pin #16. Gently guide the Start Switch Connector to both Pin #18 and #16, leaving all other pins exposed.



If Installed,  
Drain Kit with  
Pump Filter  
(RPI Part #SCK037)

**Extension Test Cable**  
(RPI Part #SCT026)

*The RPI Advantage*

The Extension Test Cable allows cover to lie horizontal for easier reading of LCD.

**Pump Tester Bottle Kit**  
(RPI Part #SCK024)

*The RPI Advantage*

The Pump Tester Bottle Kit has a "swivel elbow fitting" on the lid that allows you to control the position and balance of the bottle, as well as, 8" of tubing which allows you to move the bottle a safe distance away while testing.



**Start Switch**  
(RPI Part #SCS021)

*The RPI Advantage*

The Start Switch offers a safe and easy method to "jump start" the pump during testing.



**Here's Another RPI Advantage – The RPI Field Service Smart Kit®** (RPI Part #SCK028). It's the only one of its kind and it was designed by RPI exclusively for our customers for servicing and repairing SciCan STATIM® 2000 & 5000 Cassette Autoclaves. It includes RPI "one-of-a-kind" tools like the easy to use Probe Bracket Alignment Tool, a 25" long Extension Test Cable, Start Switch, Pump Tester Bottle with an extended swivel elbow for easy positioning, and many other tools including a Water Quality Tester with the Calibration Solution. Plus, this Kit includes RPI's *A Guide to Maintaining the SciCan STATIM® Cassette Autoclave*, an essential booklet offering troubleshooting and service tips, error code descriptions, detailed exploded views and more! Also, it all comes in a sturdy black carrying case with handle.