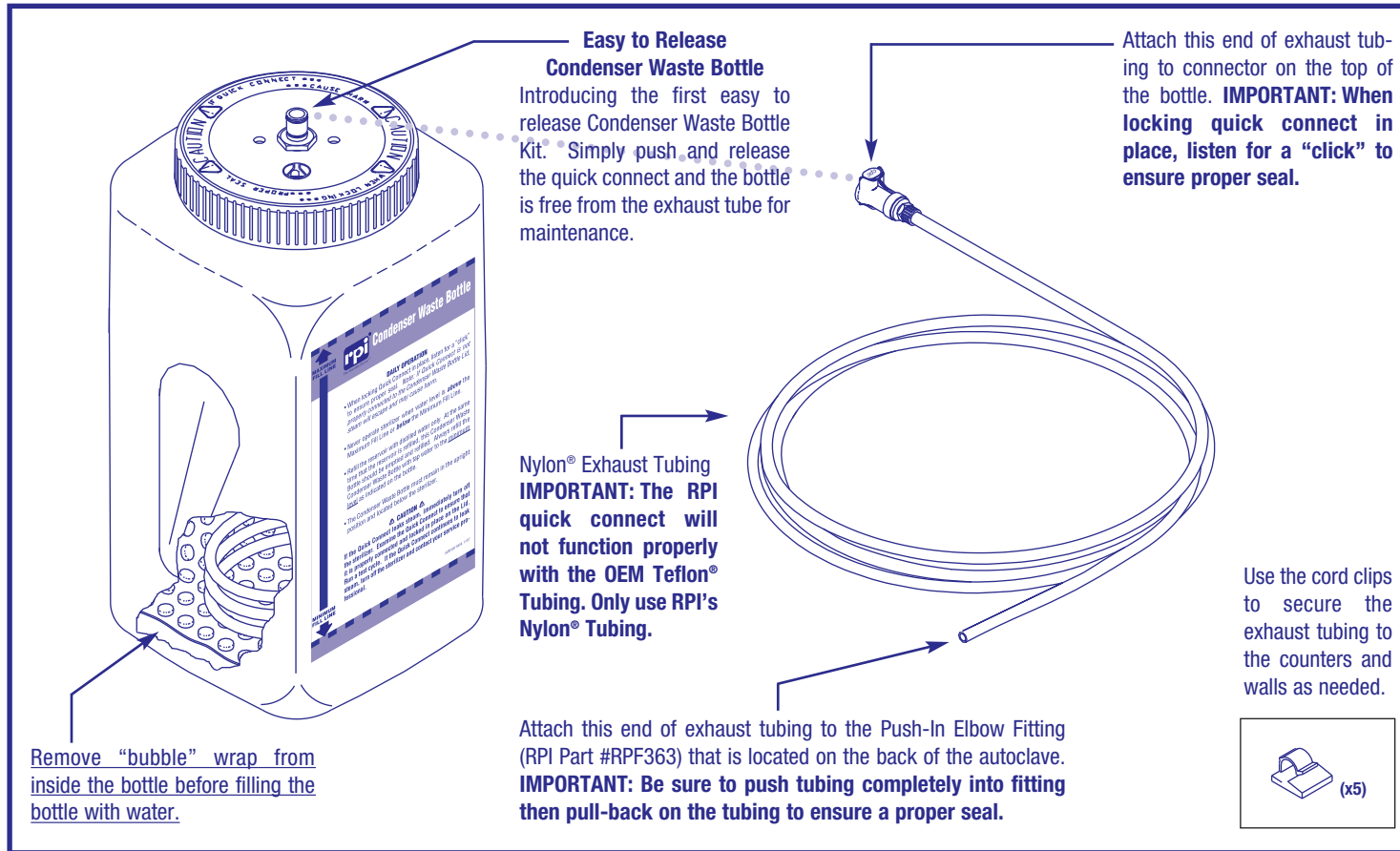


# It's the RPI "User-Friendly" Condenser Waste Bottle Kit with Quick Disconnect for Easy Bottle Release

## SCK016 CONDENSER WASTE BOTTLE KIT INSTALLATION INSTRUCTIONS

- 1) Remove original Teflon® exhaust tubing from the back of the sterilizer. **IMPORTANT: The RPI quick connect will not function properly if used with the OEM tubing. Only use RPI's Nylon® tubing.**
- 2) Unscrew lid of the bottle. Remove lid with attached condensation coil from bottle. Remove "bubble" wrap that is located inside the bottle. Replace lid with attached condensation coil and screw lid securely back onto bottle.
- 3) Fill bottle with tap water according to instructions located on front side of bottle.
- 4) Attach the end of the new exhaust tubing with the quick connect to the connector on the top of the bottle. **IMPORTANT: When locking quick connect in place, listen for a "click" to ensure proper seal.**
- 5) Attach the other end of the new exhaust tubing to the Push-In Elbow Fitting (RPI Part #RPF363) that is located on the back of the sterilizer. **IMPORTANT: Be sure to push tubing completely into fitting, then pull-back on the tubing to ensure a proper seal.**
- 6) Use the cord clips to secure the exhaust tubing as needed.



## Easy to Release Condenser Waste Bottle

**The secret is in the one-of-a-kind quick connect design.**

Our one-of-kind design allows your customer to remove the Condenser Waste Bottle from the exhaust tubing in one easy step. Simply push and release the quick connect on the lid and the bottle is free from the exhaust tube for easy maintenance.

## Condenser Waste Bottle Kit HCG/RPI Part #SCK016

**All parts in Kit are also sold separately!**

