



replacement parts industries, inc.

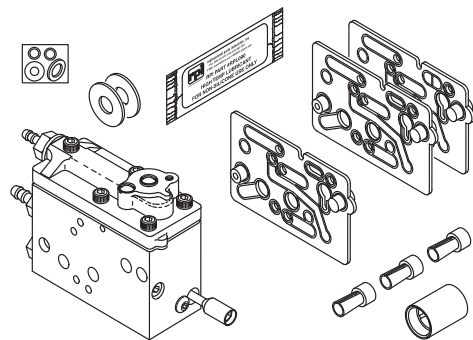
"The Alternate Source"

CALL 800-221-9723 or 818-882-8611 • FAX 818-882-7028
E-MAIL: techsupport@rpi.com • WEBSITE: www.rpiparts.com

ADK170 & ADK164

EXPLODED VIEWS & INSTALLATION INSTRUCTIONS

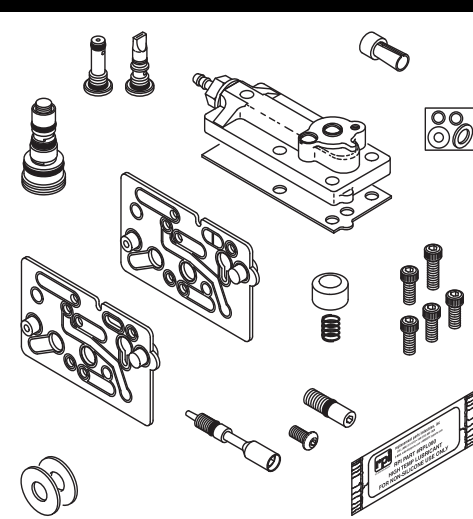
RPI PART #ADK170 - HANDPIECE CONTROL BLOCK



Kit includes:

RPI Part #	Description	QTY
ADC035	Sleeve Clamp	1
ADG158	Red Gasket	1
ADW186	Flat Washer	1
RPL090	High Temp Lubricant	1
RP0309	O-Ring	1
ADG159	Clear Gasket	2
ADW039	Flat Washer	2
RP0311	O-Ring	2
ADC034	Uni-Clamp	3

RPI PART #ADK164 - CONTROL BLOCK SERVICE KIT



Kit includes:

RPI Part #	Description	QTY
ADA165	Water Valve Actuator	1
ADA166	Control Block Cap Assy	1
ADG158	Red Gasket	1
ADG159	Clear Gasket	1
ADS118	Socket Head Cap Screw	1
ADS168	Stem (Drive Air Adj.)	1
ADS169	Button Head Cap Screw	1
ADS195	Compression Spring	1
ADS233	Stem (Water Flow Adj)	1
ADV161	Cartridge (Check Valve)	1
ADV162	Cartridge (Air Bleed Valve)	1
ADV163	Cartridge (Water Valve)	1
ADW186	Flat Washer	1
RPL090	High Temp Lubricant	1
RP0309	O-Ring	1
ADW039	Flat Washer	2
RP0311	O-Ring	2
ADS117	Socket Head Cap Screw	4

TABLE OF CONTENTS

	PAGE
Exploded View of Control Block Assembly	2-3
Drive Air Flow & Water Adjustments	4
Tubing Hook-up & Handpiece Port Identifications	4
Cartridge Placement	5
Optional Scaler Block Information	5
Frequently Used Kits & Parts	6
Using The Right Tools	6

EXPLODED VIEW OF CONTROL BLOCK ASSEMBLY

SERVICE TIPS

- Turn **OFF** the master ON/OFF Switch and operate the syringe to release air and water trapped in system.

- Always apply a light coat of lubricant (RPI Part #RPL090) to the O-Rings on stems and Cartridges prior to replacement.

- Clear Gasket (RPI Part #ADG159) to be used in all positions except end position when using optional Scaler Block.

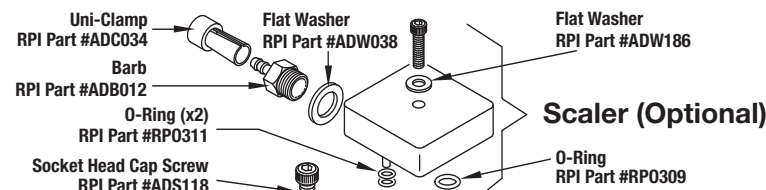
- When re-assembling 3 or 4 block assemblies, install Tie Bolt Kit and take care to tighten enough to effect sealing of Clear Gaskets (and/or Red Gasket). **DO NOT OVER TIGHTEN!**

TESTING AFTER RE-ASSEMBLY

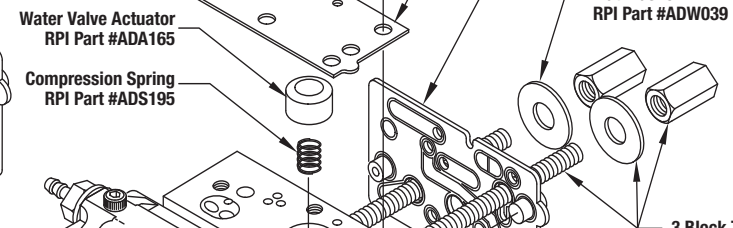
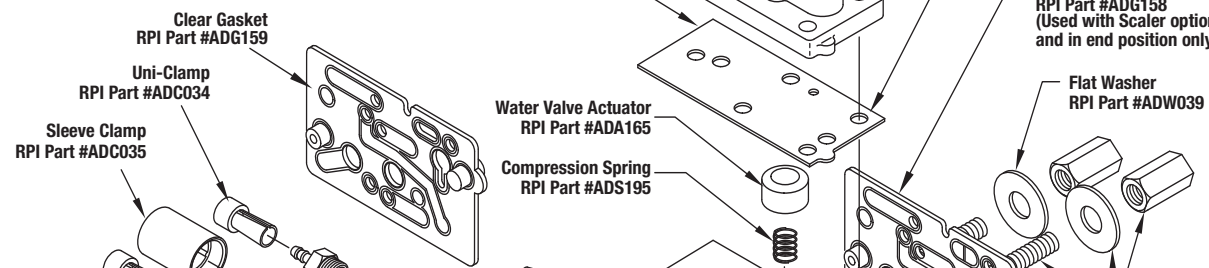
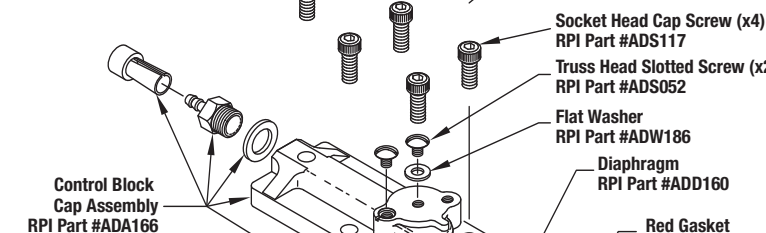
- Turn **ON** the master ON/OFF Switch. Remove Handpiece from Holder (or lift Handpiece/Whip Assembly from its resting position). Then activate Handpiece by stepping on the Foot Control. Check for air and/or water leaks all around block assembly, between block and cap, and around stems and cartridges. If leaks are detected, ensure all parts are properly tightened and re-check. If leakage is still present, the Control Block may be damaged and need to be replaced.

COVER SYMBOLS

	COOLANT WATER
	COOLANT AIR
	DRIVE AIR

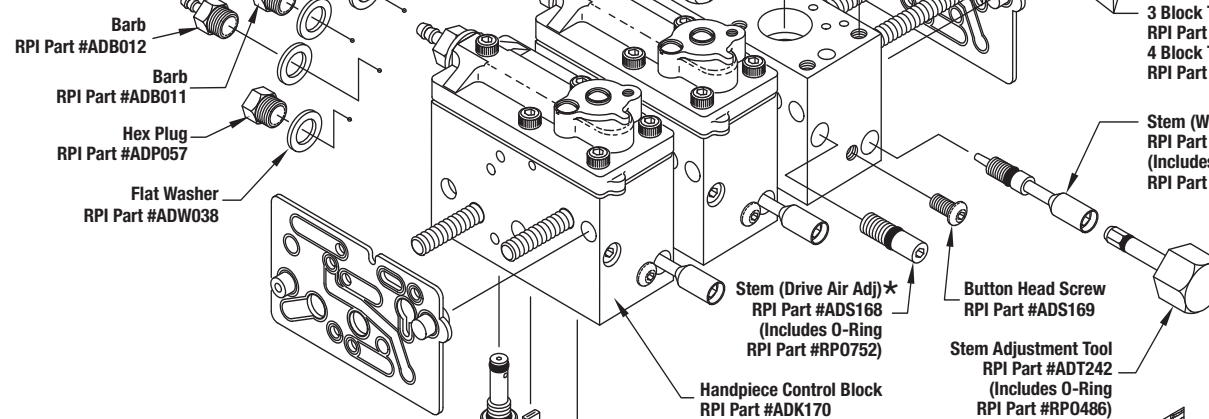


Scaler (Optional)



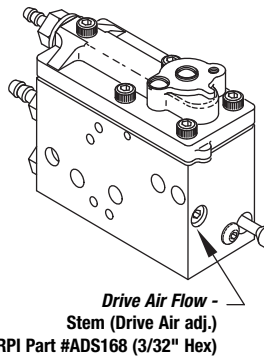
3 Block Tie-Bolt Kit RPI Part #ADK152
4 Block Tie-Bar Kit RPI Part #ADK167

Stem (Water Flow Adj) * RPI Part #ADS233 (Includes O-Ring RPI Part #RP0752)



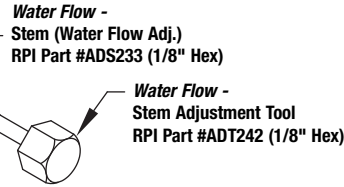
* Apply a thin coat of High Temp Lubricant (RPI Part #RPL090) onto O-rings in Stems & Cartridges prior to assembly.

DRIVE AIR FLOW & WATER ADJUSTMENTS



WATER FLOW ADJUSTMENT

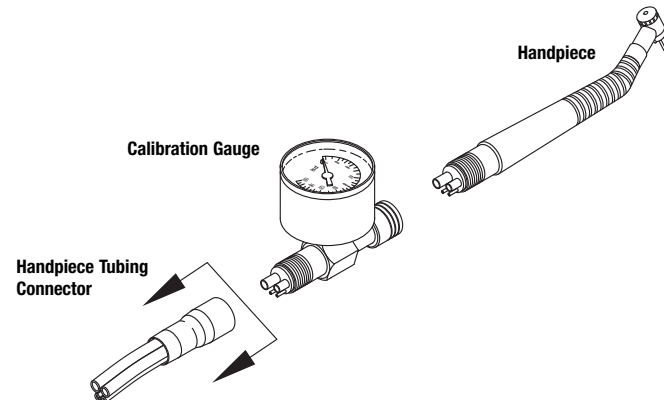
Adjust the water flow as desired by turning the Stem (Water Flow Adj.) (RPI Part #ADS233) using the Stem Adjustment Tool (RPI Part #ADT242) clockwise to decrease and counter-clockwise to increase flow.



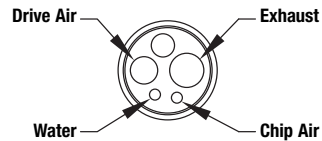
DRIVE AIR FLOW ADJUSTMENT

After each installation or servicing of the Handpiece Control Block, calibrate the Drive Air by adjusting the Stem (Drive Air Adj.) (RPI Part #ADS168). Adjust Drive Air by turning Stem clockwise to decrease and counter-clockwise to increase flow. Use a calibration gauge to monitor adjustment to conform to handpiece manufacturer's recommendation. **CALIBRATION GUIDE:** High Speed use 32-38 psi. Slow Speed use ~45 psi. For specific air pressure calibration, see manufacturer's specifications.

TUBING HOOK-UP & HANDPIECE PORT IDENTIFICATIONS

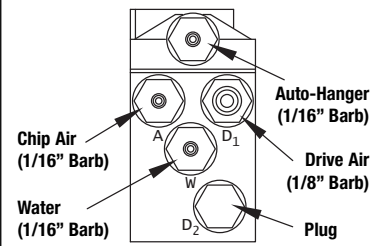


HANDPIECE TUBING CONNECTOR END VIEW

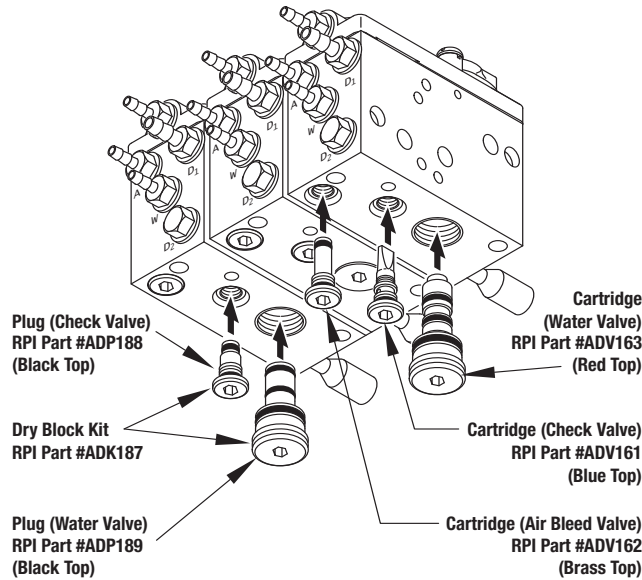


Service Tip: After installing and before calibrating, verify proper hook-up of handpiece tubing as shown.

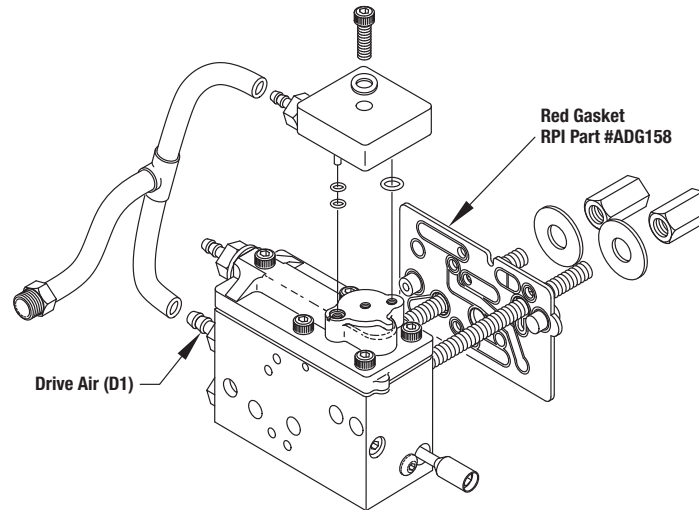
PORT IDENTIFICATION REAR VIEW FOR HANDPIECE CONTROL BLOCK



CARTRIDGE PLACEMENT



OPTIONAL SCALER BLOCK INFORMATION



WARNING: Touching Scaler Tip during operation **WILL** result in serious injury!

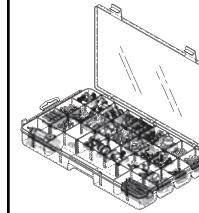
CAUTION: DO NOT RUN SCALER WITHOUT WATER! Extended operation of Scaler without water flowing from Tip can cause severe damage to Scaler Handpiece.

CARDIAC PACEMAKERS WARNING: Do not operate Ultrasonic Scaler, as Scaler can interfere with the Pacemaker.

FREQUENTLY USED KITS & PARTS

Control Block Kit (Major)
RPI Part #ADK190
OEM Part # (No OEM Part # Available)

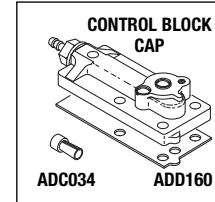
With this Kit, you can easily replace Handpiece Control Block parts, or completely rebuild the Control Block. Save money and time with this Kit!



Kit includes:

RPI Part #	Description	QTY	RPI Part #	Description	QTY
ADA166	Control Block Cap Assy	1	ADB012	Barb	10
ADA165	Water Valve Actuator	3	ADD160	Diaphragm	10
ADP188	Plug (Check Valve)	3	ADG159	Clear Gasket	10
ADP189	Plug (Water Valve)	3	ADP057	Hex Plug	10
ADS168	Stem (Drive Air Adj.)	3	ADS052	Truss Head Slotted Screw	10
ADS233	Stem (Water Flow Adj.)	4	ADS195	Compression Spring	10
ADV161	Cartridge (Check Valve)	4	RPO311	O-Ring	12
ADV162	Cartridge (Air Bleed Valve)	4	RP0311	O-Ring	12
ADV163	Cartridge (Water Valve)	4	ADW039	Flat Washer	15
ADG158	Red Gasket	5	ADC034	Uni-Clamp	20
ADS169	Button Head Cap Screw	5	ADC035	Sleeve Clamp	20
ADT242	Stem Adjustment tool	5	ADS117	Socket Head Cap Screw	25
ADW186	Flat Washer	5	ADS118	Socket Head Cap Screw	25
RPL090	High Temp Lubricant	5	ADW038	Flat Washer	50
ADB011	Barb	10			

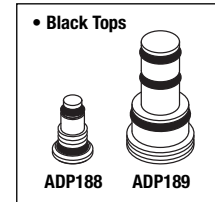
Control Block Cap Assy
RPI Part #ADA166
OEM Part #38.0546.00



Kit includes:

RPI Part #	Description	QTY
ADB012	Barb	1
ADC034	Uni-Clamp	1
ADD160	Diaphragm	1
ADW038	Flat Washer	1
ADW186	Flat Washer	1
ADS052	Truss Head Slotted Screw	2

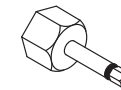
Dry Block Kit
RPI Part #ADK187
OEM Part #38.0648.00



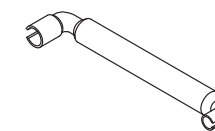
Kit includes:

RPI Part #	Description	QTY
ADP188	Plug (Check Valve)	1
ADP189	Plug (Water Valve)	1

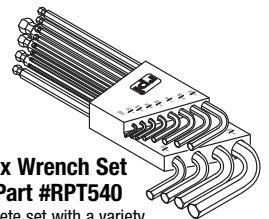
USING THE RIGHT TOOLS



Stem Adjustment Tool
RPI Part #ADT242
Perfect for adjusting water flow.



Universal Tool
RPI Part #RPT296
Great for mounting sleeves and clamps.



L-Hex Wrench Set
RPI Part #RPT540
Complete set with a variety of sizes used most often.