



NEW LINE OF PARTS TO FIT DENTAL VACUUM UNITS!

DENTAL VACUUM UNITS –

Air Techniques, Apollo/Midmark®, DentalEZ®/Custom Air/RamVac, MatrX/Midmark®, Midmark®, & Tech West

SECTION 4

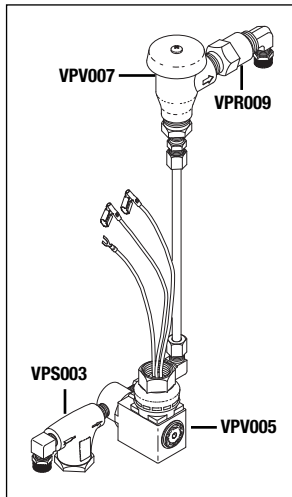
PAGE 1700

UPDATED 01/15



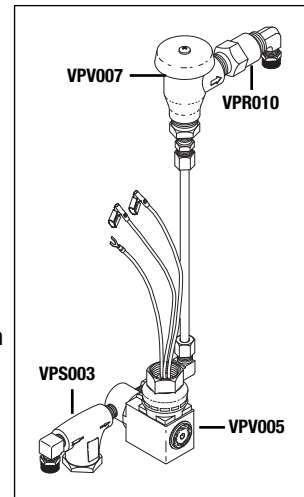
RPI Part #VPA001
OEM Part # See Chart on Back Page

- WATER CONTROL ASSEMBLY (1 HP)**
- Fully assembled for easy installation
 - 0.5 GPM flow
 - 24VAC solenoid valve
 - Includes all parts as shown
- Fits:** 1 HP Wet Ring Vacuum System



RPI Part #VPA002
OEM Part # See Chart on Back Page

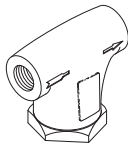
- WATER CONTROL ASSEMBLY (2 HP)**
- Fully assembled for easy installation
 - 1.0 GPM flow
 - 24VAC solenoid valve
 - Includes all parts as shown
- Fits:** 2 HP Wet Ring Vacuum Systems



With RPI, now you have a choice to replace the Strainer or just the Strainer Element – It's the RPI Advantage!

RPI Part #VPS003
OEM Part # See Chart on Back Page

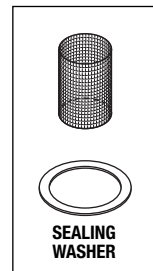
- STRAINER (WATER-1/8")**
- Material: Lead free cast copper silicon alloy
 - Ports: 1/8" FPT
 - Also available: Strainer Element (RPI Part #VPE004), Brass Nipple (1/8" MPT) (RPI Part #RPF884) and Elbow (1/4" Poly x 1/8" MPT) (RPI Part #RPF885)
 - Included in: Water Control Assembly (RPI Part #VPA001 & VPA002)
- Fits:** Water Control Assembly



STRAINER ELEMENT

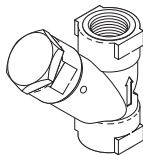
RPI Part #VPE004
OEM Part # See Chart on Back Page

- STRAINER ELEMENT**
- Material: 40 mesh stainless steel
 - Includes all parts as shown
 - Also available: Strainer (Water-1/8") (RPI Part #VPS003)
- Fits:** Water Control Assembly



RPI Part #VPS011
OEM Part # See Chart on Back Page

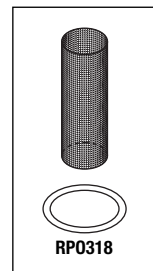
- STRAINER (WATER-1/4")**
- Material: Plastic
 - Ports: 1/4" FPT
 - Also available: Strainer Element (RPI Part #VPE012)
- Fits:** Water Control Assembly



STRAINER ELEMENT

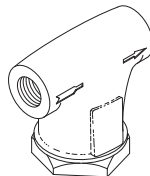
RPI Part #VPE012
OEM Part # See Chart on Back Page

- STRAINER ELEMENT**
- Material: 100 mesh stainless steel
 - Includes all parts as shown
 - Also available: Strainer (Water-1/4") (RPI Part #VPS011)
- Fits:** Water Control Assembly



RPI Part #VPS013
OEM Part # See Chart on Back Page

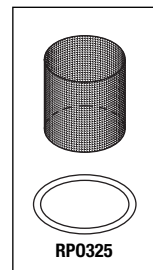
- STRAINER (WATER-1/4")**
- Material: Lead free cast copper silicon alloy
 - Ports: 1/4" FPT
 - Also available: Strainer Element (RPI Part #VPE014)
- Fits:** Water Control Assembly



STRAINER ELEMENT

RPI Part #VPE014
OEM Part # See Chart on Back Page

- STRAINER ELEMENT**
- Material: 60 mesh stainless steel
 - Includes all parts as shown
 - Also available: Strainer (Water-1/4") (RPI Part #VPS013)
- Fits:** Water Control Assembly



For more information about the parts listed in this flyer, see our website www.rpiparts.com



replacement parts industries, inc.

CALL (800) 221-9723 • FAX (818) 882-7028 • EMAIL order@rpiparts.com • WEBSITE www.rpiparts.com

The above parts are manufactured by Replacement Parts Industries, Inc. to fit the equipment noted. All product names used in this document are trademarks or registered trademarks of their respective holders. Show 01/15



With RPI, now you have a choice to replace the Solenoid Valve or repair it with one of our exclusive Kits – It's the RPI Advantage!

RPI Part #VPV005

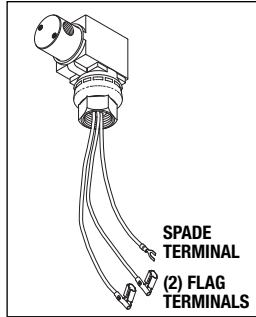
OEM Part # See Chart on Back Page



SOLENOID VALVE ASSEMBLY

- Ports: 1/8" FPT; 2-way; N.O.
- 24VAC, 60Hz., 8.5W; 18" lg. wires
- Material: Stainless steel body; Viton seals
- Includes all parts as shown
- Included in: Water Control Assembly (RPI Part #'s VPA001 & VPA002)

Fits: Water Control Assembly



REPAIR KIT

RPI Part #VPK006

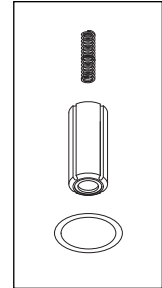
OEM Part # See Chart on Back Page



SOLENOID VALVE REPAIR KIT

- Includes all parts as shown
- Also available: Solenoid Valve Assembly (RPI Part #'s VPV005, VPV015 & VPV038)

Fits: Solenoid Valve Assembly



RPI Part #VPV015

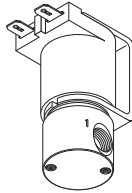
OEM Part # See Chart on Back Page



SOLENOID VALVE ASSEMBLY

- Ports: 1/8" FPT; 2-way; N.C.
- 120VAC, 60Hz., 8.5W; 1/4" Q.C. Tabs
- Material: Stainless steel body; Viton seals

Fits: Water Control Assembly



REPAIR KIT

RPI Part #VPK006

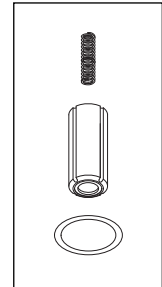
OEM Part # See Chart on Back Page



SOLENOID VALVE REPAIR KIT

- Includes all parts as shown
- Also available: Solenoid Valve Assembly (RPI Part #'s VPV005, VPV015 & VPV038)

Fits: Solenoid Valve Assembly



RPI Part #VPV038

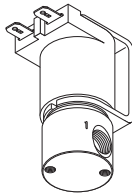
OEM Part # See Chart on Back Page



SOLENOID VALVE ASSEMBLY

- Ports: 1/8" FPT; 2-way; N.C.
- 220VAC, 50Hz., 8.5W; 1/4" Q.C. Tabs
- Material: Stainless steel body; Viton seals

Fits: Water Control Assembly



REPAIR KIT

RPI Part #VPK006

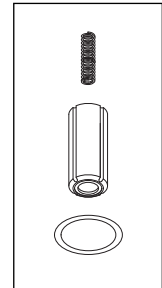
OEM Part # See Chart on Back Page



SOLENOID VALVE REPAIR KIT

- Includes all parts as shown
- Also available: Solenoid Valve Assembly (RPI Part #'s VPV005, VPV015 & VPV038)

Fits: Solenoid Valve Assembly



RPI Part #VPV017

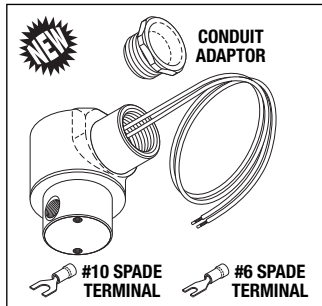
OEM Part # See Chart on Back Page



SOLENOID VALVE ASSEMBLY

- Ports: 1/8" FPT; 2-way; N.C.
- 120VAC, 60Hz., 7W; 12" lg. wires
- Material: Stainless steel body; Nitrile (Buna-N) seals
- Includes all parts as shown

Fits: Water Control Assembly



REPAIR KIT

RPI Part #VPK018

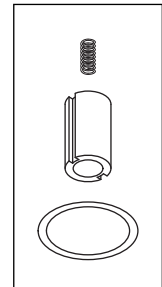
OEM Part # See Chart on Back Page



SOLENOID VALVE REPAIR KIT

- Includes all parts as shown
- Also available: Solenoid Valve Assembly (RPI Part #'s VPV017 & VPV036)

Fits: Water Control Solenoid Valve



Note: When replacing the Solenoid Valve (RPI Part #VPV017) in units that require the Upgrade Kit (OEM Part #55020), see our website www.rpiparts.com for additional fittings and hardware parts available.

RPI Part #VPV036

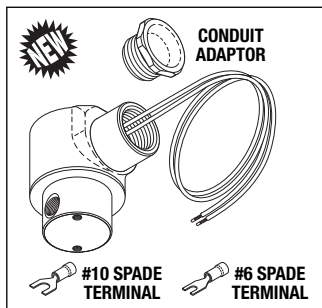
OEM Part # See Chart on Back Page



SOLENOID VALVE ASSEMBLY

- Ports: 1/8" FPT; 2-way; N.C.
- 240VAC, 60Hz., 7W; 12" lg. wires
- Material: Stainless steel body; Nitrile (Buna-N) seals
- Includes all parts as shown

Fits: Water Control Assembly



REPAIR KIT

RPI Part #VPK018

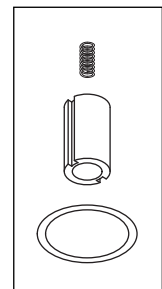
OEM Part # See Chart on Back Page



SOLENOID VALVE REPAIR KIT

- Includes all parts as shown
- Also available: Solenoid Valve Assembly (RPI Part #'s VPV017 & VPV036)

Fits: Water Control Solenoid Valve

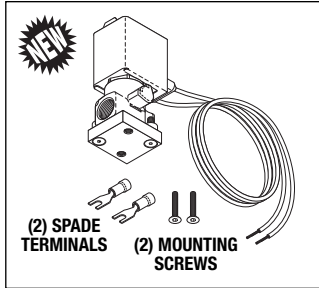


With RPI, now you have a choice to replace the Solenoid Valve or repair it with one of our exclusive Kits – It's the RPI Advantage!

RPI Part #VPV019
OEM Part # See Chart on Back Page

SOLENOID VALVE ASSEMBLY

- Ports: 1/8" FPT; 2-way; N.C.
 - 120VAC, 60Hz., 6.3W; 18" lg. wires
 - Material: Stainless steel body; Viton seals
 - Includes all parts as shown
- Fits:** Water Control Assembly

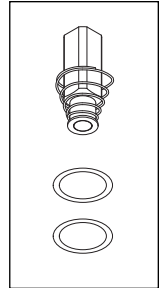


REPAIR KIT

RPI Part #VPK020
OEM Part # See Chart on Back Page

SOLENOID VALVE REPAIR KIT

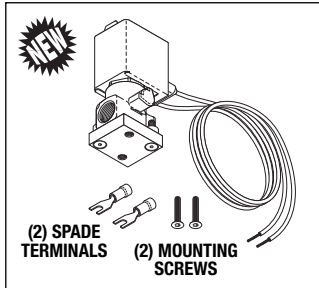
- Includes all parts as shown
 - Also available: Solenoid Valve Assembly (RPI Part #'s VPV019 & VPV037)
- Fits:** Solenoid Valve Assembly



RPI Part #VPV037
OEM Part # See Chart on Back Page

SOLENOID VALVE ASSEMBLY

- Ports: 1/8" FPT; 2-way; N.C.
 - 220VAC, 60HZ., 6.3W; 18" lg. wires
 - Material: Stainless steel body; Viton seals
 - Includes all parts as shown
- Fits:** Water Control Assembly

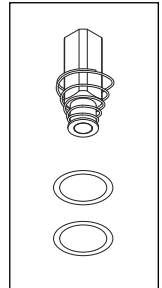


REPAIR KIT

RPI Part #VPK020
OEM Part # See Chart on Back Page

SOLENOID VALVE REPAIR KIT

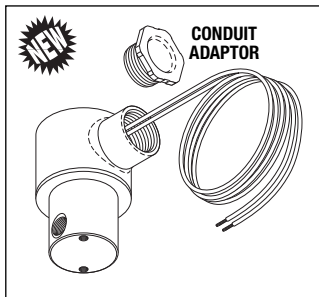
- Includes all parts as shown
 - Also available: Solenoid Valve Assembly (RPI Part #'s VPV019 & VPV037)
- Fits:** Solenoid Valve Assembly



RPI Part #VPV034
OEM Part # See Chart on Back Page

SOLENOID VALVE ASSEMBLY

- Ports: 1/8" FPT; 2-way; N.C.
 - 120VAC; 60Hz., 8W; 24" lg. wires
 - Material: Stainless steel body; Nitrile (Buna-N) seals
 - Includes all parts as shown
- Fits:** Water Control Assembly

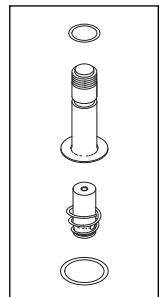


REPAIR KIT

RPI Part #VPK035
OEM Part # See Chart on Back Page

SOLENOID VALVE REPAIR KIT

- Includes all parts as shown
 - Also available: Solenoid Valve Assembly (RPI Part #VPV034)
- Fits:** Solenoid Valve Assembly



With RPI, now you have a choice to replace the Anti-Syphon Valve or repair it with one of our Kits – It's the RPI Advantage!

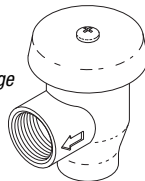


APOLLO BRAND

RPI Part #VPV021
OEM Part # See Chart on Back Page

ANTI-SYPHON VALVE (1/4")

- Material: Brass; Silicone seal
 - Ports: 1/4" FPT
- Fits:** Water Control Assembly



REPAIR KIT

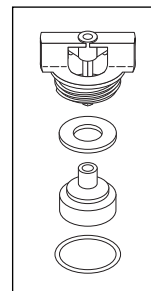
APOLLO BRAND



RPI Part #VPK008
OEM Part # See Chart on Back Page

ANTI-SYPHON VALVE REPAIR KIT

- Includes all parts as shown
 - Material: Silicone seal
 - Used to repair the **Apollo** brand Anti-Syphon Valve (1/4" & 3/8") **Only**
 - For Watts brand Anti-Syphon Valve Repair Kit, use RPI Part #VPK016
- Fits:** Apollo Anti-Syphon Valves (RPI Part #'s VPV007 and VPV021)



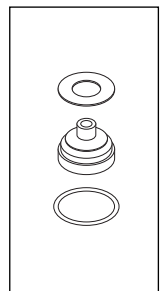
WATTS BRAND



RPI Part #VPK016
OEM Part # See Chart on Back Page

ANTI-SYPHON VALVE REPAIR KIT

- Includes all parts as shown
 - Material: Silicone seal
 - Used to repair the **Watts** brand Anti-Syphon Valve (1/4" & 3/8") **Only**
 - For Apollo brand Anti-Syphon Valve Repair Kit, use RPI Part #VPK008
- Fits:** Watts 1/4" and 3/8" Anti-Syphon Valves

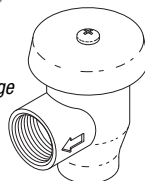


APOLLO BRAND

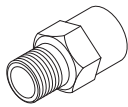
RPI Part #VPV007
OEM Part # See Chart on Back Page

ANTI-SYPHON VALVE (3/8")

- Material: Brass; Silicone seal
 - Ports: 3/8" FPT
 - Included in: Water Control Assembly (RPI Part #'s VPA001 & VPA002)
- Fits:** Water Control Assembly



REPAIR KIT



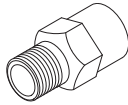
RPI Part #VPR009

OEM Part # See Chart on Back Page

FLOW REGULATOR (0.5 GPM)

- Material: Nickel plated brass
- Ports: 3/8" FPT x 3/8" MPT
- Included in: Water Control Assembly (1 HP) (RPI Part #VPA001)

Fits: Water Control Assembly



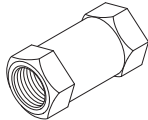
RPI Part #VPR010

OEM Part # See Chart on Back Page

FLOW REGULATOR (1 GPM)

- Material: Nickel plated brass
- Ports: 3/8" FPT x 3/8" MPT
- Included in: Water Control Assembly (2 HP) (RPI Part #VPA002)

Fits: Water Control Assembly



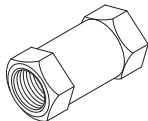
RPI Part #VPR022

OEM Part # See Chart on Back Page

FLOW REGULATOR (0.13 GPM)

- Material: Nickel plated brass
- Ports: 3/8" FPT

Fits: Water Control Assembly



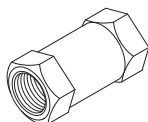
RPI Part #VPR023

OEM Part # See Chart on Back Page

FLOW REGULATOR (0.19 GPM)

- Material: Nickel plated brass
- Ports: 3/8" FPT

Fits: Water Control Assembly



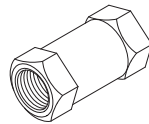
RPI Part #VPR024

OEM Part # See Chart on Back Page

FLOW REGULATOR (0.25 GPM)

- Material: Nickel plated brass
- Ports: 3/8" FPT

Fits: Water Control Assembly



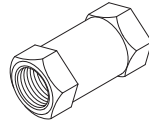
RPI Part #VPR025

OEM Part # See Chart on Back Page

FLOW REGULATOR (1 GPM)

- Material: Nickel plated brass
- Ports: 3/8" FPT

Fits: Water Control Assembly



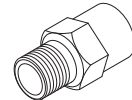
RPI Part #VPR026

OEM Part # See Chart on Back Page

FLOW REGULATOR (.50 GPM)

- Material: Nickel plated brass
- Ports: 3/8" FPT

Fits: Water Control Assembly



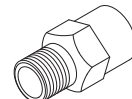
RPI Part #VPR027

OEM Part # See Chart on Back Page

FLOW REGULATOR (0.75 GPM)

- Material: Nickel plated brass
- Ports: 3/8" FPT x 3/8" MPT

Fits: Water Control Assembly



RPI Part #VPR028

OEM Part # See Chart on Back Page

FLOW REGULATOR (1.5 GPM)

- Material: Nickel plated brass
- Ports: 3/8" FPT x 3/8" MPT

Fits: Water Control Assembly



RPI Part #VPR030

OEM Part # See Chart on Back Page

FLOW REGULATOR (.19 GPM)

- Material: Brass
- Size: 1/4" Polyflo x 1/4" MPT

Fits: Water Control Assembly



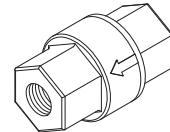
RPI Part #VPR031

OEM Part # See Chart on Back Page

FLOW REGULATOR (.19 GPM)

- Material: Brass
- Size: 1/4" Push-in Fitting x 1/4" MPT
- See our website www.rpiparts.com for the quantity required for specific models

Fits: Vacuum System



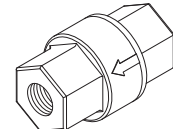
RPI Part #VPR032

OEM Part # See Chart on Back Page

FLOW REGULATOR (.26 GPM)

- Material: Black plastic
- Ports: 1/4" FPT
- For use with vacuum pumps equipped with water recyclers only
- See our website www.rpiparts.com for the quantity required for specific models

Fits: Water Injection Assembly



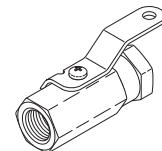
RPI Part #VPR033

OEM Part # See Chart on Back Page

FLOW REGULATOR (.73 GPM)

- Material: Black plastic
- Ports: 1/4" FPT
- For use with vacuum pumps not equipped with water recyclers
- See our website www.rpiparts.com for the quantity required for specific models

Fits: Water Injection Assembly



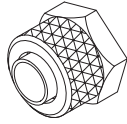
RPI Part #VPV029

OEM Part # See Chart on Back Page

VALVE (SHUT OFF)

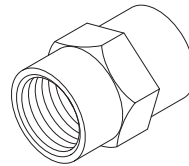
- Material: Brass; PTFE seat
- Ports: 1/4" FPT
- -40°F to 300°F
- 1000 PSI Max

Fits: Water Control Assembly



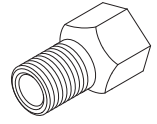
RPI Part #RPF883
OEM Part # (No OEM Part # Available)

POLYFLO NUT (1/4")
• 5 per package
• Material: Brass
• Fits: 1/4" O.D. plastic tube
Fits: Water Control Assembly



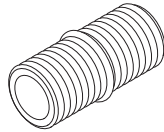
RPI Part #RPF887
OEM Part # (No OEM Part # Available)

ADAPTOR (1/4" FPT x 1/4" FPT)
• 2 per package
• Material: Brass
Fits: Water Control Assembly

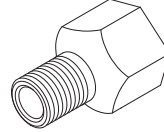


RPI Part #RPF891
OEM Part # (No OEM Part # Available)

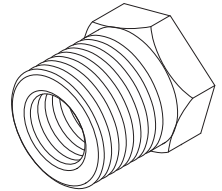
ADAPTOR (1/8" FPT x 1/8" MPT)
• 2 per package
• Material: Brass
Fits: Water Control Assembly



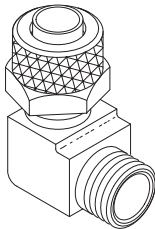
RPI Part #RPF884
OEM Part # (No OEM Part # Available)
ADAPTOR (1/8" MPT x 1/8" MPT)
• 5 per package
• Material: Brass
• Size: 1/8" MPT x 1/8" MPT
Fits: Water Control Assembly



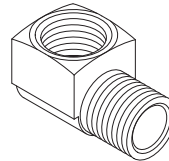
RPI Part #RPF888
OEM Part # (No OEM Part # Available)
ADAPTOR (1/8" MPT x 1/4" FPT)
• 2 per package
• Material: Brass
Fits: Water Control Assembly



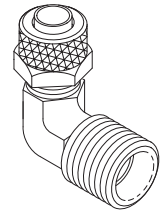
RPI Part #RPF892
OEM Part # (No OEM Part # Available)
ADAPTOR (1/8" FPT x 3/8" MPT)
• 2 per package
• Material: Brass
Fits: Water Control Assembly



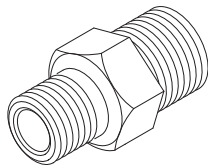
RPI Part #RPF885
OEM Part # (No OEM Part # Available)
ELBOW (1/4" POLY x 1/8" MPT)
• 2 per package
• Material: Brass
Fits: Water Control Assembly



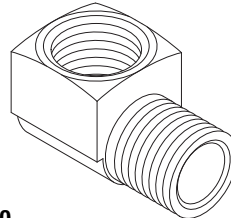
RPI Part #RPF889
OEM Part # (No OEM Part # Available)
ELBOW (1/8" FPT x 1/8" MPT)
• 2 per package
• Material: Brass
Fits: Water Control Assembly



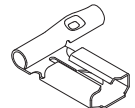
RPI Part #RPF893
OEM Part # (No OEM Part # Available)
ELBOW (1/4" POLY x 3/8" MPT)
• 2 per package
• Material: Brass
Fits: Water Control Assembly



RPI Part #RPF886
OEM Part # (No OEM Part # Available)
ADAPTOR (1/8" MPT x 1/4" MPT)
• 2 per package
• Material: Brass
Fits: Water Control Assembly



RPI Part #RPF890
OEM Part # (No OEM Part # Available)
ELBOW (1/4" FPT x 1/4" MPT)
• 2 per package
• Material: Brass
Fits: Water Control Assembly



RPI Part #RPT905
OEM Part # (No OEM Part # Available)
FLAG TERMINAL (1/4" QC)
• 20 per package
• Mating Tab Size: .250" x .032"
• Wire Range: #22-18 AWG
• Style: Right Angle, Female Non-Insulated
• Also available: Terminal Crimp Tool (RPI Part #RPT482)



replacement parts industries, inc.

20338 Corisco Street • Chatsworth, California • 91311

PRESORTED STANDARD
U.S. POSTAGE PAID
VAN NUYS, CA
PERMIT NO. 2399

ADDRESS SERVICES REQUESTED

NEW LINE OF PARTS TO FIT DENTAL VACUUM UNITS!

List of RPI Parts to fit Dental Vacuum Units

See our website www.rpiparts.com for specific models these parts fit!

RPI PART #	DESCRIPTION	AIR TECHNIQUES	APOLLO/MIDMARK®	DENTALEZ®/CUSTOM AIR/RAMVAC	MATRIX/MIDMARK®	MIDMARK®	TECH WEST
VPA001	Water Control Assembly (1 HP)			64568196			
VPA002	Water Control Assembly (2 HP)			64568197			
VPV021	Anti-Syphon Valve (1/4")		PW50595		77005072	77005072	PVB100
VPV007	Anti-Syphon Valve (3/8")	55525		64622011			
VPK008	Anti-Syphon Valve Repair Kit	55517	No OEM Part # Available	64568016A	77005073	77005073	No OEM Part # Available
VPK016	Anti-Syphon Valve Repair Kit	55517	No OEM Part # Available	64568016A	77005073	77005073	No OEM Part # Available
VPV005	Solenoid Valve Assembly			64568156			
VPK006	Solenoid Valve Repair Kit		No OEM Part # Available	No OEM Part # Available	No OEM Part # Available	No OEM Part # Available	
VPV015	Solenoid Valve Assembly		PW10470		77005146 & 77001620	77005146 & 77001620	
VPV038	Solenoid Valve Assembly		PW10472			77001621	
VPV017	Solenoid Valve Assembly	55387					
VPK018	Solenoid Valve Repair Kit	No OEM Part # Available					
VPV036	Solenoid Valve Assembly	55040, 55060, 55080, 55107 & 55116					
VPV019	Solenoid Valve Assembly	55519					
VPK020	Solenoid Valve Repair Kit	No OEM Part # Available					
VPV037	Solenoid Valve Assembly	55518					
VPV034	Solenoid Valve Assembly						PSV-115
VPK035	Solenoid Valve Repair Kit						No OEM Part # Available
VPS003	Strainer (Water-1/8")	55526		64568135 (includes fittings)			No OEM Part # Available
VPS011	Strainer (Water-1/4")					65962000	
VPE004	Strainer Element	No OEM Part # Available		No OEM Part # Available			No OEM Part # Available
VPE012	Strainer Element					No OEM Part # Available	
VPS013	Strainer (Water-1/4")	55909	PCB50960		77005145		
VPE014	Strainer Element	No OEM Part # Available	No OEM Part # Available		No OEM Part # Available		
VPR009	Flow Regulator (0.5 GPM)	55523		64568192			
VPR010	Flow Regulator (1 GPM)			64622010			
VPR022	Flow Regulator (0.13 GPM)			6-4622-018			
VPR023	Flow Regulator (0.19 GPM)		PW50505				
VPR024	Flow Regulator (0.25 GPM)			6-4622-019			
VPR025	Flow Regulator (1 GPM)	56010					
VPR026	Flow Regulator (0.50 GPM)		PW50507				
VPR027	Flow Regulator (0.75 GPM)	55524					
VPR028	Flow Regulator (1.5 GPM)	56011					
VPR030	Flow Regulator (.19 GPM)				10362300		
VPR031	Flow Regulator (.19 GPM)					20202900	
VPR032	Flow Regulator (.26 GPM)						WIN-RP
VPR033	Flow Regulator (.73 GPM)						WIN-2P
VPV029	Valve (Shut Off)				61301100	61301100	