

Models: Century V116, V120, V136, V148 & V160

**New PM Packs**  
and more to fit

## AMSCO/STERIS®

Century V116, V120, V136, V148 & V160 Sterilizers!

AMSCO/STERIS®



RPI Part #AMP212  
OEM Part #764326-480

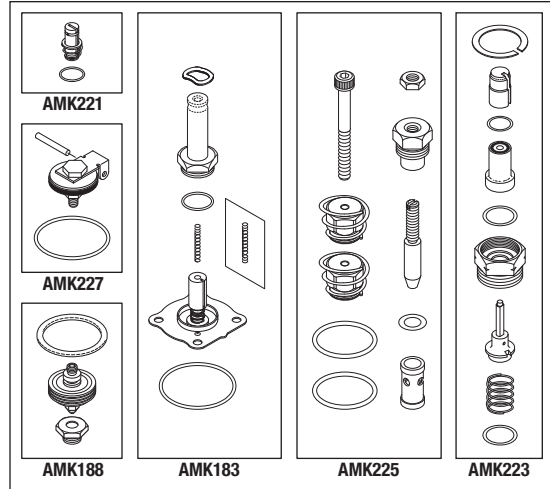
**PM PACK (EXHAUST MANIFOLD)**

- Includes: S3 Solenoid Valve Repair Kit For 3/8" Port Valves (RPI Part #AMK183), S40 Solenoid Valve Repair Kit (RPI Part #AMK223), S37 Solenoid Valve Repair Kit (RPI Part #AMK221), CK4 and CK6/FC2 Control Valve & Flow Control Kit (RPI Part #AMK225), TR1 Steam Trap Repair Kit (RPI Part #AMK188), and CK8 Check Valve Repair Kit (RPI Part #AMK227)

- Also available: Seat Kit (Exhaust) (RPI Part #AMK216)

**Fits:** Exhaust Manifold

**Models:** Century V116 & V120



RPI Part #AMP211  
OEM Part #764326-475

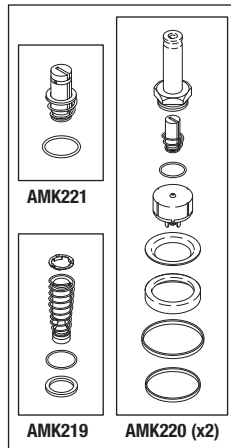
**PM PACK (STEAM MANIFOLD)**

- Includes: S1 Solenoid Valve Repair Kit (RPI Part #AMK219), (2) S2 and S9 Solenoid Valve Repair Kit (RPI Part #AMK220), and S35 Solenoid Valve Repair Kit (RPI Part #AMK221)

- Also available: Seat Kit (Steam) (RPI Part #AMK215)

**Fits:** Steam Manifold

**Models:** Century V116 & V120



RPI Part #AMP209  
OEM Part #764326-486

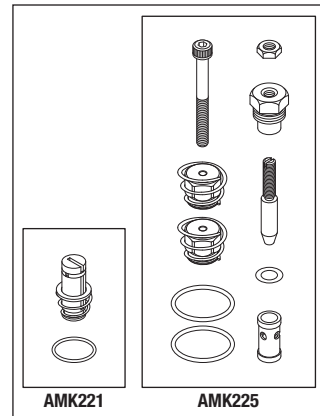
**PM PACK (DOUBLE DOOR MANIFOLD)**

- Includes: S38 Solenoid Valve Repair Kit (RPI Part #AMK221) and CK7/FC3 Check Valve & Flow Control Kit (RPI Part #AMK225)

- Also available: Seat Kit (Double Door) (RPI Part #AMK210)

**Fits:** Double Door Manifold

**Models:** Century V116 & V120



RPI Part #AMP213  
OEM Part #764326-619

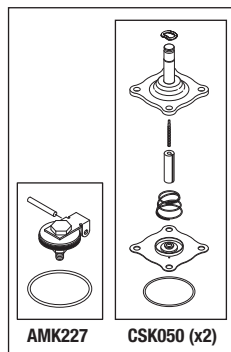
**PM PACK (WATER MANIFOLD)**

- Includes: (2) S4 and S7 Solenoid Valve Repair Kit (RPI Part #CSK050) and CK5 Check Valve Repair Kit (RPI Part #AMK227)

- Also available: Seat Kit (Water) (RPI Part #AMK217)

**Fits:** Water Manifold

**Models:** Century V116 & V120

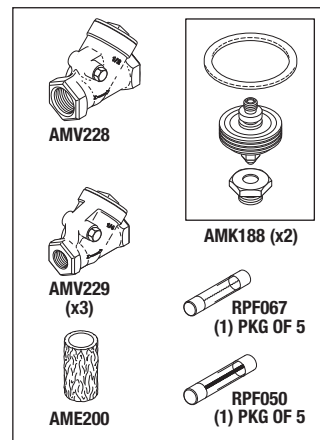


RPI Part #AMP214  
OEM Part #764326-646

**PM PACK (MISCELLANEOUS)**

- Includes: Check Valve (1/4" (RPI Part #AMV228), Filter Element (RPI Part #AME200), (2) Steam Trap Repair Kit (RPI Part #AMK188), (3) Check Valve (1/2") (RPI Part #AMV229), (1 pkg of 5) (5A 240V) – Time Delay (RPI Part #RPF067), and (1 pkg of 5) (4A, 250v) – Fast Acting (RPI Part #RPF050)

**Models:** Century V116 & V120



**replacement parts industries, inc.**

CALL (800) 221-9723 • FAX (818) 882-7028 • EMAIL [order@riparts.com](mailto:order@riparts.com) • WEBSITE [www.riparts.com](http://www.riparts.com)

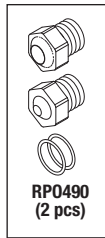
The above parts are manufactured by Replacement Parts Industries, Inc. to fit the equipment noted. All product names used in this document are trademarks or registered trademarks of their respective holders. 1904AM Show 05/21



**RPI Part #AMK210**  
**OEM Part #764326-487**

**SEAT KIT (DOUBLE DOOR)**

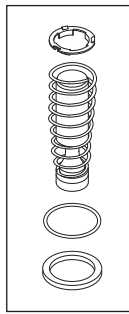
- Material: Stainless steel and EPDM O-Rings
  - Includes: S38 .218" seat, CK7 .109" seat, and (2 pcs) O-Ring (RPI Part #RPO490)
- Fits:** Double Door Manifold  
**Models:** Century V116 & V120



**RPI Part #AMK219**  
**OEM Part #764326-477**

**SOLENOID VALVE REPAIR KIT**

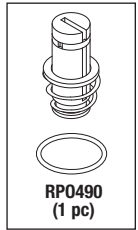
- Seal material: EPDM
  - Includes all parts as shown
  - Included In: PM Pack (Steam Manifold) (RPI Part #AMP211)
  - Also available: Seat Kit (Steam) (RPI Part #AMK215)
- Fits:** Steam Manifold S1  
**Models:** Century V116 & V120



**RPI Part #AMK221**  
**OEM Part #764326-479**

**SOLENOID VALVE REPAIR KIT**

- Seal Material: EPDM
- Includes all parts as shown
- Included In: PM Pack (Steam Manifold) (RPI Part #AMP211), PM Pack (Exhaust Manifold) (RPI Part #AMP212), and PM Pack (Double Door Manifold) (RPI Part #AMP209)
- Also available: Seat Kit (Steam) (RPI Part #AMK215), Seat Kit (Exhaust) (RPI Part #AMK216) and Seat Kit (Double Door) (RPI Part #AMK210)

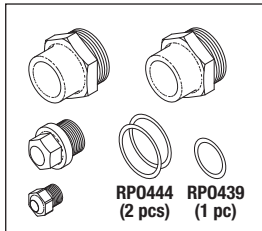


**Fits:** Exhaust Manifold S37, Steam Manifold S35 and Double Door Manifold S38  
**Models:** Century V116 & V120

**RPI Part #AMK215**  
**OEM Part #764326-476**

**SEAT KIT (STEAM)**

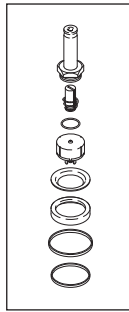
- Material: Stainless steel seats and EPDM O-Rings
  - Includes: S35 .218" seat, S1 .375" seat, (2) S2 and S9 .625" seats, (1 pc) O-Ring (RPI Part #RPO439), and (2 pcs) O-Ring (RPI Part #RPO444)
- Fits:** Steam Manifold  
**Models:** Century V116 & V120



**RPI Part #AMK220**  
**OEM Part #764326-478**

**SOLENOID VALVE REPAIR KIT**

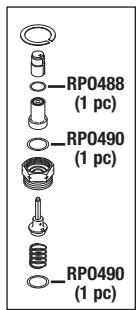
- Seal material: EPDM
  - Includes all parts as shown
  - Included In: PM Pack (Steam Manifold) (RPI Part #AMP211)
  - Also available: Seat Kit (Steam Manifold) (RPI Part #AMK215)
- Fits:** Steam Manifold S2 and S9  
**Models:** Century V116 & V120



**RPI Part #AMK223**  
**OEM Part #764326-483**

**SOLENOID VALVE REPAIR KIT**

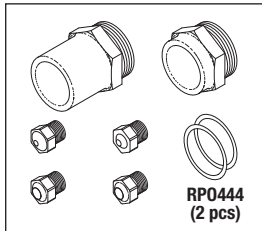
- Seal material: EPDM
  - Includes all parts as shown
  - Included In: PM Pack (Exhaust Manifold) (RPI Part #AMP212)
  - Also available: Seat Kit (Exhaust) (RPI Part #AMK216)
- Fits:** Exhaust Manifold S40  
**Models:** Century V116 & V120



**RPI Part #AMK216**  
**OEM Part #764326-481**

**SEAT KIT (EXHAUST)**

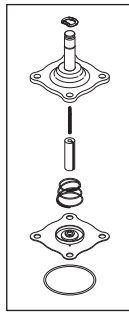
- Material: Stainless steel seats and EPDM O-Rings
  - Includes: S40 .094" seat, CK6 .109" seat, CK8 .750" short seat, S3 .750" long seat, (2) CK4 and S37 .218" seats, and (2 pcs) O-Ring (RPI Part #RPO444)
- Fits:** Exhaust Manifold  
**Models:** Century V116 & V120



**RPI Part #CSK050**  
**OEM Part #54187;**  
**P764326-621; 62470303**

**SOLENOID VALVE REPAIR KIT**

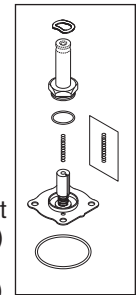
- Material: Nitrile (Buna-N) seals
  - Includes all parts as shown
  - Included in: PM Pack (Water Manifold) (RPI Part #AMP213)
  - Also available: Seat Kit (Exhaust) (RPI Part #AMK216)
- Fits:** Water Manifold: S7 and S4  
**Models:** Century V116 & V120



**RPI Part #AMK183**  
**OEM Part #764187-001 (S26) & 764326-482 (S3)**

**SOLENOID VALVE REPAIR KIT FOR 3/8" PORT VALVES**

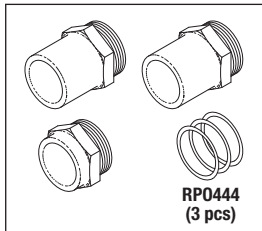
- EPDM seal
  - Includes all parts as shown
  - Included in: PM Pack (Exhaust Manifold) (RPI Part #AMP212)
  - Also available: Seat Kit (Exhaust) (RPI Part #AMK216)
- Fits:** Solenoid Valve: Steam to Jet S26 and Exhaust Manifold S3  
**Models:** Century V116, V120 & Eagle 2000



**RPI Part #AMK217**  
**OEM Part #764326-620**

**SEAT KIT (WATER)**

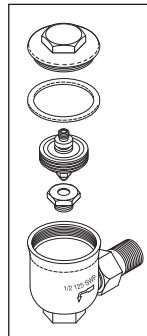
- Material: Stainless steel seats and EPDM O-Rings
  - Includes: CK5 .750" short seat, (2) S4 and S7 .750" long seats, and (3 pcs) O-Ring (RPI Part #RPO444)
- Fits:** Water Manifold  
**Models:** Century V116 & V120



**RPI Part #AMT187**  
**OEM Part #129222-001**

**STEAM TRAP ASSEMBLY**

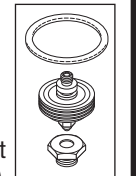
- Includes all parts as shown
  - 1/2" MPT port
  - Includes: Steam Trap Assembly Repair Kit (RPI Part #AMK188)
- Fits:** Steam Trap and Exhaust Manifold TR1  
**Models:** Century V116, V120, V148, V160, Eagle 2000, 3000 & Medallion



**RPI Part #AMK188**  
**OEM Part #764080-001**

**STEAM TRAP REPAIR KIT**

- Includes all parts as shown
  - Included in: PM Pack (Exhaust Manifold) (RPI Part #AMP212) and PM Pack (Misc) (RPI Part #AMP214)
  - Also available: Seat Kit (Exhaust) (RPI Part #AMK216) and Steam Trap Assembly (RPI Part #AMT187)
- Fits:** Steam Trap and Exhaust Manifold TR1  
**Models:** Century V116, V120, V148, V160, Eagle 2000, 3000 & Medallion

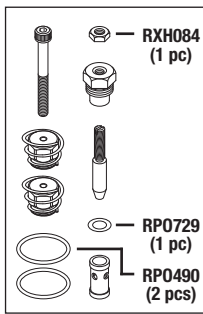




**RPI Part #AMK225**  
**OEM Part #764326-485**

**CHECK VALVE & FLOW CONTROL KIT**

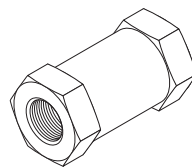
- Seal material: EPDM
  - Includes all parts as shown
  - Included In: PM Pack (Exhaust Manifold) (RPI Part #AMP212) and PM Pack (Double Door) (RPI Part #AMP209)
  - Also available: Seat Kit (Exhaust) (RPI Part #AMK216)
- Fits:** Exhaust Manifold CK4 and CK6/FC2 and Double Door Manifold CK7/FC3  
**Models:** Century V116 & V120



**RPI Part #AMV282**  
**OEM Part #056402-067**

**CHECK VALVE**

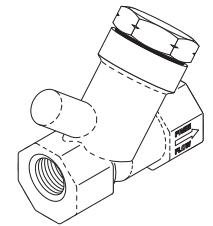
- Cracking pressure: 0.50 PSI
  - Ports: 3/4" FPT x 3/4" FPT
  - Material: Stainless steel valve with Teflon (PTFE) seals
  - Size: 1.75" Hex x 3.37" lg.
- Fits:** Filtered Air Line CK1  
**Models:** Century V136, V148 & V160



**RPI Part #AMV284**  
**OEM Part #150829-501**

**CHECK VALVE**

- Cracking pressure: 1 PSI
  - Ports: 1/4" FPT x 1/4" FPT
  - Material: Brass body; EPDM seals
  - Also available: Check Valve Repair Kit (RPI Part #AMK285)
- Fits:** Steam Bleed Line CK4  
**Models:** Century V136, V148 & V160



**RPI Part #RXH084**  
**OEM Part # (OEM Part # Not Available)**

**HEX NUT (#10-32)**

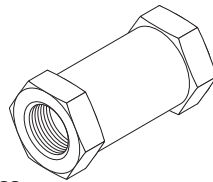
- 25 per package
  - Material: Stainless steel
  - Size: 3/8" Hex x 1/8" Thick
  - Included in: Check Valve & Flow Control Kit (RPI Part #AMK225)
- Models:** Century V116 & V120



**RPI Part #AMV286**  
**OEM Part #056402-068**

**CHECK VALVE**

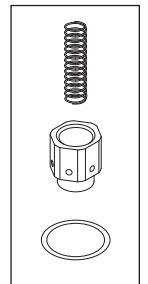
- Cracking pressure: 0.50 PSI
  - Ports: 1" FPT x 1" FPT
  - Material: Stainless steel valve with Teflon (PTFE) seals
  - Size: 2" Hex x 4" lg.
- Fits:** Exhaust Line CK8  
**Models:** Century V136, V148 & V160



**RPI Part #AMK285**  
**OEM Part #764329-776**

**CHECK VALVE REPAIR KIT**

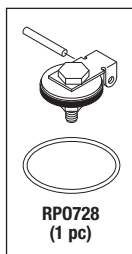
- Seal material: Viton® (FKM)
  - Also available: Check Valve (RPI Part #AMV284)
- Fits:** Steam Bleed Check Valve CK4  
**Models:** Century V136, V148 & V160



**RPI Part #AMK227**  
**OEM Part #764326-484/764326-622**

**CHECK VALVE REPAIR KIT**

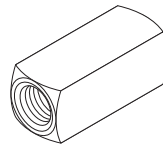
- Seal material: Viton® (FKM)
  - Includes all parts as shown
  - Included In: PM Pack (Exhaust Manifold) (RPI Part #AMP212) and PM Pack (Water Manifold) (RPI Part #AMP213)
  - Also available: Seat Kit (Water) (RPI Part #AMK217) and Seat Kit (Exhaust) (RPI Part #AMK216)
- Fits:** Exhaust Manifold CK8 and Water Manifold CK5  
**Models:** Century V116 & V120



**RPI Part #AMV283**  
**OEM Part #083521-001**

**CHECK VALVE**

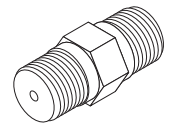
- Cracking pressure: 0.50 PSI
  - Ports: 1/4" FPT x 1/4" FPT
  - Material: Brass body, EP seal
  - Size: .69" sq. x 1.69" lg.
- Fits:** Water Line CK2  
**Models:** Century V136, V148 & V160



**RPI Part #AM0289**  
**OEM Part #129376-082**

**ORIFICE (DOOR SEAL)**

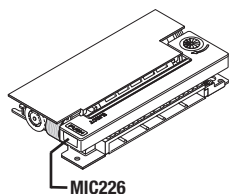
- 2 per package
  - .094" Orifice
  - Ports: 1/4" MPT x 1/4" MPT
  - Material: 303 Stainless Steel
- Fits:** Door Seal Channel FC3 & FC4  
**Models:** Century V136, V148 & V160



**RPI Part #AMH294**  
**OEM Part #093918-051**

**PRINTER HEAD**

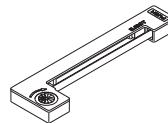
- Ribbon printer
  - Size: 3.58" x 1.85" x .62" thk.
  - Includes: Printer Cartridge (RPI Part #MIC226)
  - Also available: Printer Paper (RPI Part #RXP088)
- Fits:** Printer  
**Models:** Century V116, V120, V136, V148 & V160



**RPI Part #MIC226**  
**OEM Part # (OEM Part # Not Available)**

**PRINTER CARTRIDGE**

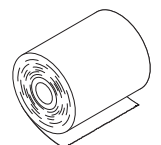
- Epson® brand ribbon cartridge; Color: Black
  - Also available: Printer Head (RPI Part #AMH294) and Printer Paper (RPI Part #RXP088)
- Fits:** Printers  
**Models:** Century V116, V120, V136, V148 & V160



**RPI Part #RXP088**  
**OEM Part #129359-008**

**PRINTER PAPER**

- 5 per package
  - Size: 2.25" wide
  - Also available: Printer Head (RPI Part #AMH294) and Printer Cartridge (RPI Part #MIC226)
- Fits:** Printer  
**Models:** Century V116, V120, V136, V148 & V160



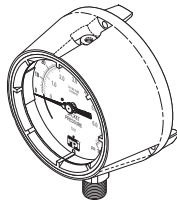
RPI Part #AMG287  
OEM Part #136816-097

**PRESSURE GAUGE (JACKET)**

- Size: 4-1/2" Dial face
- Dual scale: 0 to 100 PSIG, 0 to 7 Bar
- Port: 1/2" MPT, bottom mount

**Fits:** Front Panel

**Models:** Century V136, V148 & V160



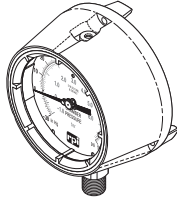
RPI Part #AMG288  
OEM Part #136816-096

**PRESSURE GAUGE (CHAMBER)**

- Size: 4-1/2" Dial face
- Dual scale: -30 Hg. 0 to 100 PSIG.;  
-1.0 to +7.0 Bar
- Port: 1/2" MPT, bottom mount

**Fits:** Front Panel

**Models:** Century V136, V148 & V160



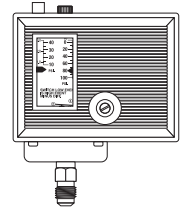
RPI Part #AMS253  
OEM Part #764323-470

**PRESSURE CONTROL SWITCH  
(OPERATING PRESSURE)**

- 120/240 VAC, 15A
- Factory set to: On @ 70 PSI - Off @ 80 PSI
- 275°F Max temperature

**Fits:** Steam Generator

**Models:** Century V116 & V120



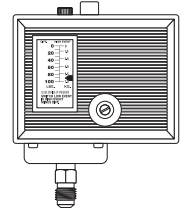
RPI Part #AMS254  
OEM Part #764323-471

**PRESSURE SWITCH (HIGH LIMIT)**

- 120/240 VAC, 15A
- Factory set to: On @ 75 PSI - Off @ 85 PSI
- 275°F Max temperature

**Fits:** Steam Generator

**Models:** Century V116 & V120



New Parts to fit AMSCO/STERIS® Century V116, V120, V136, V148 & V160 Sterilizers!

ADDRESS SERVICES REQUESTED

PERMITTED STANDARD  
U.S. POSTAGE PAID  
VAN NUYS, CA  
PERMIT NO. 2399

625 Cochran Street • Simi Valley, California • 93065  
**replacement parts industries, inc.**



**PARTS YOU NEED MOST!**

- **Check Valves & Check Valve Kits**
- **Heat Exchanger**
- **Manifold PM Packs**
- **Pressure Gauges**
- **Pressure Switches**
- **Seal Kits**
- **Solenoid Valve Repair Kits**
- **Steam Trap Assembly & Repair Kit**
- **Printer Head, Cartridge & Paper**



RPI Part #AMX290  
OEM Part #136816-022

**HEAT EXCHANGER**

- Size: 12.20" x 4.40" x 1.69"
- Ports: 1" MPT x (4)
- Rated up to 435 PSI and 450°F steam

**Fits:** Mounts on top of Vacuum/Pump Assembly

**Models:** Century V136, V148 & V160

